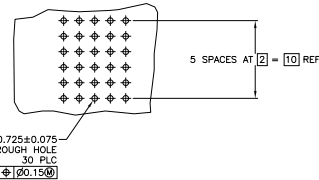
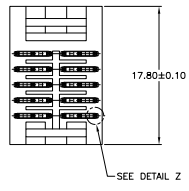
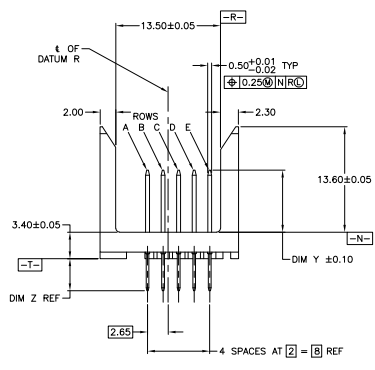
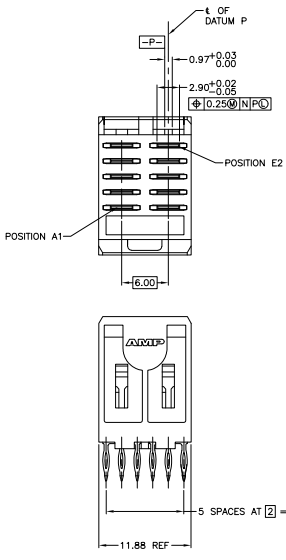
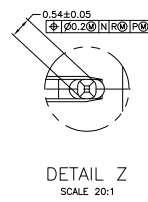


REV	DATE	DESCRIPTION	BY	CHK	APP
AD 00					
A1		REVISED PER ECO 04-00270			



RECOMMENDED CIRCUIT PATTERN
 PER IPC-D300 TYPE II, CLASS C
 (COMPONENT SIDE)

- △ HOUSING MATERIAL: LIQUID CRYSTAL POLYMER, NATURAL.
- △ CONTACT MATERIAL: COPPER ALLOY.
- △ CONTACT FINISH:
 UNDERPLATE (ENTIRE CONTACT):
 0.00127 MIN NICKEL PER SAE-AMS-QQ-N-290
 ON MATING SURFACES:
 FLASH GOLD PER ASTM B 488, OVER
 0.00078 MIN PALLADIUM-NICKEL OVER UNDERPLATE, OR
 0.00078 MIN GOLD PER ASTM B 488 OVER UNDERPLATE.
 ON LEADS:
 0.00127 MIN MATTE TIN PER ASTM B 545 OVER UNDERPLATE.
 LUBRICATION (MIN MATING SURFACES):
 SURFACE CONDITIONER AFTER PLATING.
- △ PART NUMBER AND DATE CODE IN APPROXIMATE AREA AS SHOWN.



DETAIL Z
 SCALE 20:1

THIS DRAWING IS A CONTROLLED DOCUMENT.		REVISED BY	117-88	DATE	11-28-88	BY	WJL	CHK	WJL	APP	
DRAWING NO.		108-1441	REVISED BY		117-88	DATE		11-28-88	BY WJL		
PROJECT NO.		114-1075	REVISED BY		117-88	DATE		11-28-88	BY WJL		
CUSTOMER DRAWING		A1	REVISED BY		117-88	DATE		11-28-88	BY WJL		

THIS DRAWING IS UNPUBLISHED. RECEIVED FOR REVISION
 © 2008 BY TYS ELECTRONICS CORPORATION. ALL RIGHTS RESERVED.

REV	DATE	DESCRIPTION	BY	APP
AD	00	SEE SHEET 1	-	-

AD	4	5.00	4.25
AC	3	8.00	4.25
AB	2	7.25	4.25
AA	1	6.50	4.25
CONTACT LETTER	ITEM NUMBER	DIM Y	DIM Z

E	AA	AA	E	5536642-1
D	AA	AA	D	
C	AA	AA	C	
B	AA	AA	B	
A	AA	AA	A	
ROW	1	2	ROW	PART NUMBER
				CONTACT LOAD CHART

E	AA	AC	E	5536642-6
D	AA	AC	D	
C	AA	AC	C	
B	AA	AC	B	
A	AA	AC	A	
ROW	1	2	ROW	PART NUMBER
				CONTACT LOAD CHART

E	AB	AB	E	1-5536642-6
D	AB	AB	D	
C	AB	AB	C	
B	AB	AB	B	
A	AB	AB	A	
ROW	1	2	ROW	PART NUMBER
				CONTACT LOAD CHART

E	AA	AA	E	5536642-4
D	AA	AA	D	
C	AB	AB	C	
B	AC	AC	B	
A	AC	AC	A	
ROW	1	2	ROW	PART NUMBER
				CONTACT LOAD CHART

E	AC	AC	E	5536642-7
D	AC	AC	D	
C	AC	AC	C	
B	AC	AC	B	
A	AC	AC	A	
ROW	1	2	ROW	PART NUMBER
				CONTACT LOAD CHART

E	AB	AB	E	2-5536642-4
D	AA	AA	D	
C	AB	AB	C	
B	AA	AA	B	
A	AB	AB	A	
ROW	1	2	ROW	PART NUMBER
				CONTACT LOAD CHART

E	AA	AA	E	5536642-5
D	AA	AA	D	
C	AA	AA	C	
B	AC	AC	B	
A	AA	AA	A	
ROW	1	2	ROW	PART NUMBER
				CONTACT LOAD CHART

E	AC	AC	E	1-5536642-0
D	AB	AB	D	
C	AD	AD	C	
B			B	
A	AC	AC	A	
ROW	1	2	ROW	PART NUMBER
				CONTACT LOAD CHART

E	AC	AA	E	2-5536642-5
D	AC	AA	D	
C	AC	AA	C	
B	AC	AA	B	
A	AC	AA	A	
ROW	1	2	ROW	PART NUMBER
				CONTACT LOAD CHART

THIS DRAWING IS A CONTROLLED DOCUMENT.

DESIGNER	DATE	REV	DATE
108-1441	11-14-07	1	11-14-07
114-1075			

ASSEMBLY, PIN, VERTICAL
 5 ROW, POWER MODULE, PRESS FIT
 LEAD, Z-FRAC, 2mm, 1MM

00779 ©=5536642
 CUSTOMER DRAWING

DATE: 4-1 SHEET: 2 OF 2