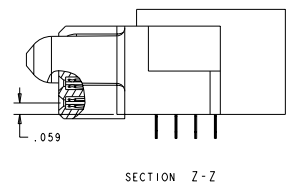
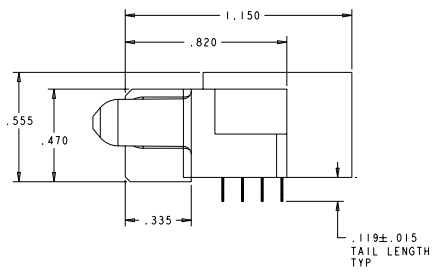
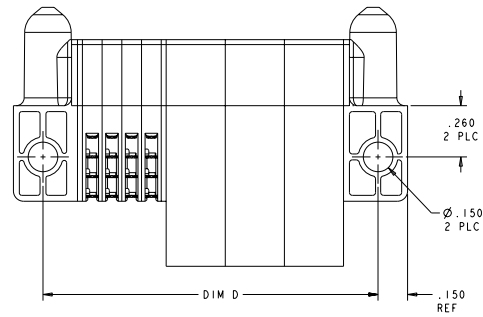
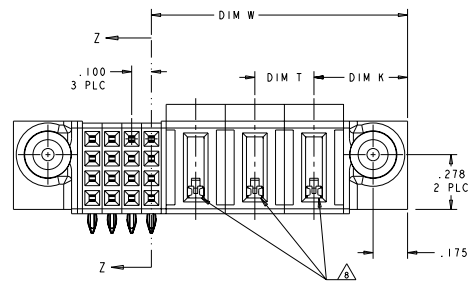
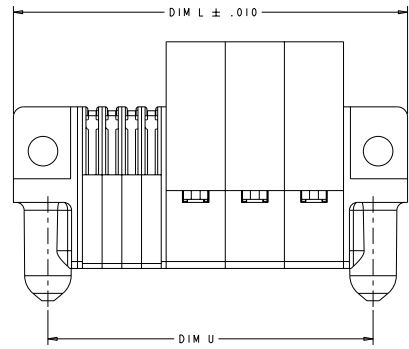


REV	DATE	DESCRIPTION	BY	CHK	APP
A	REV PER ECR-04-021202				
A2	REVISED				
A3	REV PER ECR-11-007251				



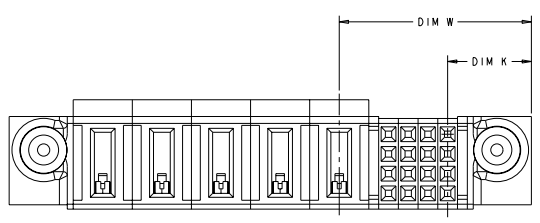
- △ "AMP", PART NUMBER AND DATE CODE TO BE MARKED
- △ MATERIAL: HOUSING - GLASS FILLED HIGH TEMP THERMO PLASTIC, UL94 V-0.
 SIGNAL CONTACT - HIGH CONDUCTIVITY COPPER ALLOY
 POWER CONTACT - HIGH CONDUCTIVITY COPPER ALLOY
- △ CONTACT PLATING: SIGNAL CONTACTS - .000050 MIN Ni UNDER ALL .000030 MIN Au ON CONTACT AREA. .000100 MIN Sn AT PCB INTERFACE.
 POWER CONTACTS - .000050 MIN Ni UNDER ALL .000030 MIN Au ON CONTACT AREA. .000100 MIN Sn AT PCB INTERFACE.
- △ MECHANICAL CONNECTOR KEEP OUT ZONE.
- △ DATUM AND BASIC DIMENSIONS ESTABLISHED BY CUSTOMER.
- △ PCB - ALL HOLE DIAMETERS ARE FINISHED HOLE SIZES
- △ PCB - .0453 ± .0010 DRILLED HOLES PLATED WITH .0003 MIN Sn OVER .001 TO .003 Cu PLATING TO ACHIEVE A .040 DIAMETER HOLE
- △ A/C POWER CABLE CONTACT LOADED IN THESE CAVITIES.
- △ VARIABLE DIMENSIONS SHOW ON PAGE 2

.300	2.350	.425	.925	2.300	2.650	16S + 5ACP	6450668-2
.300	1.700	.475	1.300	1.650	2.000	3ACP + 16S	6450668-1
DIM T	DIM D	DIM K	DIM W	DIM U	DIM L	DESCRIPTION	PART NUMBER

INCHES DECIMALS FRACTIONS DECIMALS FRACTIONS		0.0001 INCHES 0.0005 INCHES 0.001 INCHES 0.002 INCHES 0.005 INCHES 0.010 INCHES 0.020 INCHES 0.050 INCHES 0.100 INCHES 0.200 INCHES 0.500 INCHES 1.000 INCHES		0.0001 INCHES 0.0005 INCHES 0.001 INCHES 0.002 INCHES 0.005 INCHES 0.010 INCHES 0.020 INCHES 0.050 INCHES 0.100 INCHES 0.200 INCHES 0.500 INCHES 1.000 INCHES		0.0001 INCHES 0.0005 INCHES 0.001 INCHES 0.002 INCHES 0.005 INCHES 0.010 INCHES 0.020 INCHES 0.050 INCHES 0.100 INCHES 0.200 INCHES 0.500 INCHES 1.000 INCHES		0.0001 INCHES 0.0005 INCHES 0.001 INCHES 0.002 INCHES 0.005 INCHES 0.010 INCHES 0.020 INCHES 0.050 INCHES 0.100 INCHES 0.200 INCHES 0.500 INCHES 1.000 INCHES	
DATE: 04/25/04 DRAWN BY: J. J. J. CHECKED BY: J. J. J. APPROVED BY: J. J. J. TITLE: RIGHT ANGLE RECEPTACLE ASSEMBLY A/C PASS THRU W/GUIDES MULTI-BEAM XL PART NUMBER: 6450668 REV: A SHEET: 1 OF 1				TECH ELECTRONICS CORPORATION 114 E. 130th St. Minneapolis, MN 55416 (612) 835-1100 FAX: (612) 835-1101 WWW: WWW.TECH-INTL.COM					

8 7 6 5 4 3 2 1
 ALL DIMENSIONS IN MILLIMETERS UNLESS OTHERWISE SPECIFIED
 RECEPTACLE FOR PUBLICATION
 © 2007-2008 BY TYPE ELECTRONICS CORPORATION. ALL RIGHTS RESERVED

REV	DATE	DESCRIPTION	BY	CHK	APP
ES	00	SEE SHEET 1			



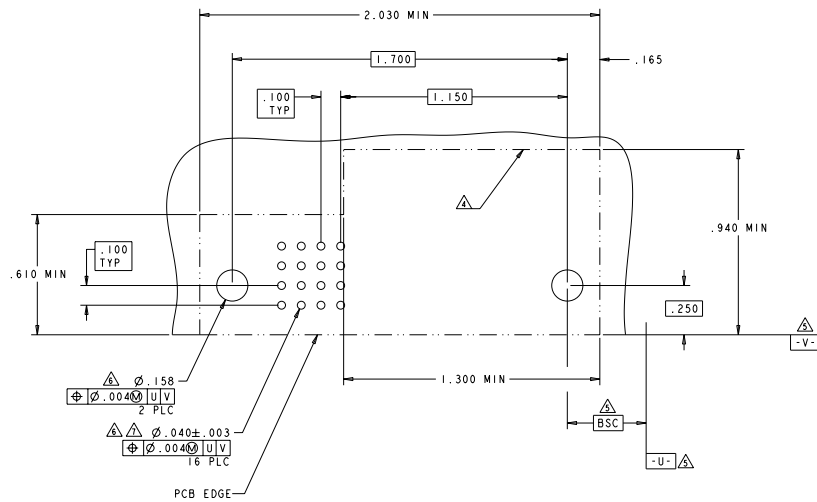
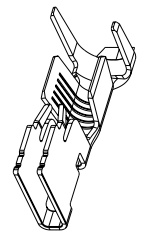
6450668-2

TYPE ELECTRONICS CORPORATION 1000 N. 10TH ST., SUITE 100 PHILADELPHIA, PA 19107 TEL: 215-381-1000 FAX: 215-381-1001 WWW.TYPEELECTRONICS.COM		DRAWING NO. RSEF2004 REV. 02.00.00 DATE 08-19-03 PROJECT NO. 00778 CUSTOMER NO. 6450668		Type Electronics Skaneateles, P.O. Box 200233	
DIMENSIONS: INCHES DECIMALS FRACTIONS ANGLES	DIMENSIONS: MILLIMETERS DECIMALS FRACTIONS ANGLES	TITLE RIGHT ANGLE RECEPTACLE ASSEMBLY A/C PASS THRU W/GUIDES MULTI-BEAM XL	SIZE A	SCALE AS SHOWN	SHEET NO. 2 OF 4
MATERIAL:		CUSTOMER DRAWING		TOLERANCE:	

REV	DATE	DESCRIPTION	BY	CHK	APP
ES	00	SEE SHEET 1			

PART NUMBER	ROWS	SIGNAL			POWER		
		4	3	2	1	P3	P2
6450668-1	D	D	D	D			
	C	C	C	C			
	B	B	B	B	STD	STD	STD
	A	A	A	A			

3ACP + 16S



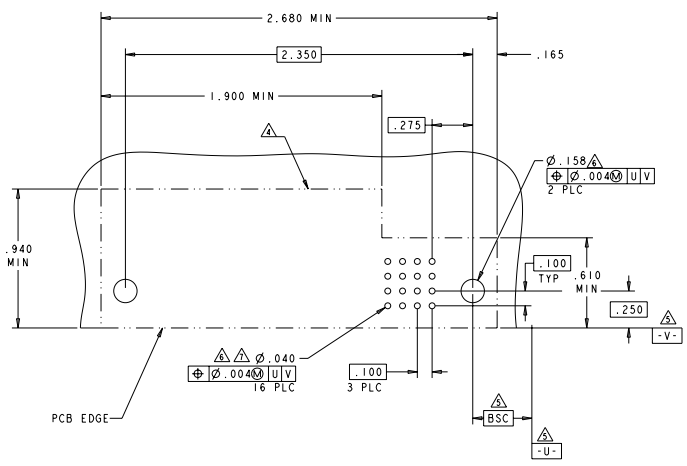
CODE	DESCRIPTION	ROW
D	SIGNAL CONTACT, PRESS-FIT	D
C	SIGNAL CONTACT, PRESS-FIT	C
B	SIGNAL CONTACT, PRESS-FIT	B
A	SIGNAL CONTACT, PRESS-FIT	A

TITLE: RIGHT ANGLE RECEPTACLE ASSEMBLY PART NO: 6450668-1 DATE: 11-13-98 DRAWN BY: J. J. ... CHECKED BY: ... APPROVED BY: ...		REV: 00 DATE: 11-13-98 BY: J. J. ... CHECKED BY: ... APPROVED BY: ...		TECH ELECTRONICS CORPORATION 2000 N.	
DIMENSIONS: INCHES TOLERANCES: .010 .005 .002 .001 .0005 .0002 .0001		PART NO: 6450668-1 REV: 00 DATE: 11-13-98 BY: J. J. ... CHECKED BY: ... APPROVED BY: ...		TITLE: RIGHT ANGLE RECEPTACLE ASSEMBLY PART NO: 6450668-1 DATE: 11-13-98 BY: J. J. ... CHECKED BY: ... APPROVED BY: ...	

REV	DATE	DESCRIPTION	BY	CHK	APP
ES	00	SEE SHEET 1			

PART NUMBER	ROWS	POWER				SIGNAL				
		P5	P4	P3	P2	P1	4	3	2	1
6450668-2	D						D	D	D	D
	C	STD	STD	STD	STD	STD	C	C	C	C
	B						B	B	B	B
	A						A	A	A	A

16S * 5ACP



DATE	REV	DESCRIPTION	BY	CHK	APP
05/22/2018	00	SEE SHEET 1			

TITLE		DATE		REV		DRAWN BY		CHECKED BY		APPROVED BY	
RIGHT ANGLE RECEPTACLE ASSEMBLY		05/22/2018		00		TSC ELECTRONICS CORPORATION		TSC ELECTRONICS CORPORATION		TSC ELECTRONICS CORPORATION	
A/C PASS THRU W/GUIDES		05/22/2018		00		TSC ELECTRONICS CORPORATION		TSC ELECTRONICS CORPORATION		TSC ELECTRONICS CORPORATION	
MULTI-BEAM XL		05/22/2018		00		TSC ELECTRONICS CORPORATION		TSC ELECTRONICS CORPORATION		TSC ELECTRONICS CORPORATION	