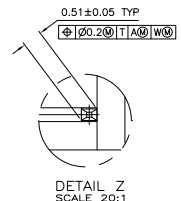
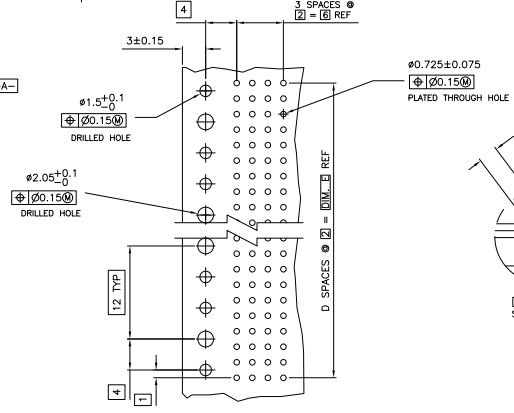
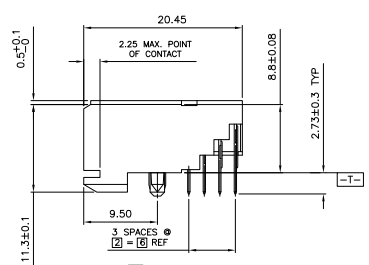
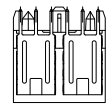
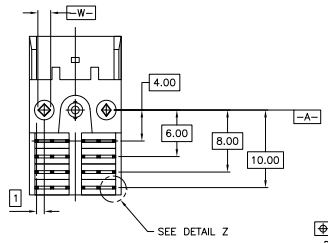
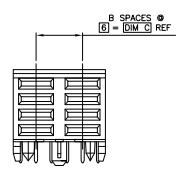
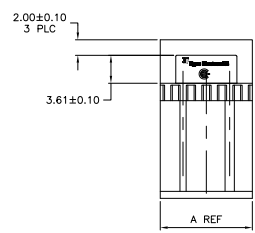


REV	DATE	DESCRIPTION	BY	CHK	APP
AD	00				
P2		REVISED PER ECO-08-009111			

▲ HOUSING MATERIAL: LIQUID CRYSTAL POLYMER.
 ▲ CONTACT MATERIAL: PHOSPHOR-BRONZE.
 ▲ CONTACT FINISH:
 UNDERPLATE (ENTIRE CONTACT):
 0.00127 MIN NICKEL PER SAE-AMS-QQ-N-290
 ON MATING SURFACES:
 FLASH GOLD PER ASTM B 488, OVER
 0.00076 MIN PALLADIUM-NICKEL OVER UNDERPLATE, OR
 0.00076 MIN GOLD PER ASTM B 488 OVER UNDERPLATE.
 ON LEADS:
 0.00381 MIN TIN-LEAD OVER UNDERPLATE.
 LUBRICATION (MIN MATING SURFACES)
 SURFACE CONDITIONER AFTER PLATING.



RECOMMENDED CIRCUIT PATTERN
 PER IPC-D-300 TYPE II, CLASS C
 (COMPONENT SIDE)

10	5	6	1	11.88	8	536607-1
E	D	C	B	A	FINISH	PART NUMBER
THIS DRAWING IS A CONTROLLED DOCUMENT.						
DESIGNER: [Signature]			DATE: 07/26/91		BY: [Signature]	
CHECKER: [Signature]			DATE: 07/26/91		BY: [Signature]	
TYPED BY: [Signature] TITLE: Z-PACK 2mm FB, POWER MODULE, RCPT. ASSY. 4 ROW, 2.73 mm LEAD LENGTH						
MATERIAL: [Signature]			DATE: 08/08/91		BY: [Signature]	
DRAWN: [Signature]			DATE: 08/08/91		BY: [Signature]	
CHECKED: [Signature]			DATE: 08/08/91		BY: [Signature]	
APPROVED: [Signature]			DATE: 08/08/91		BY: [Signature]	
CUSTOMER DRAWING			PART: 4.1		REV: 1	