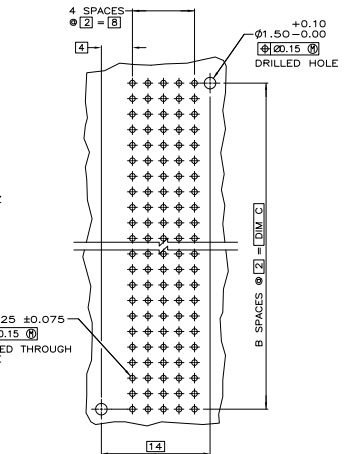
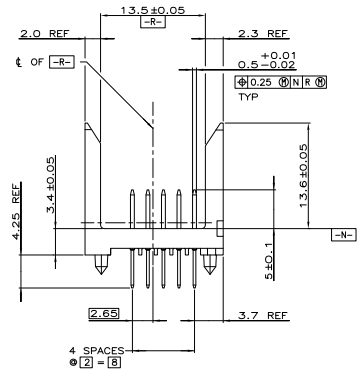
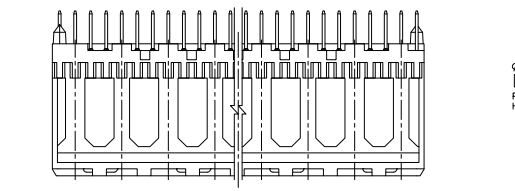
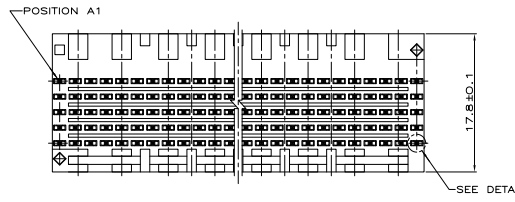
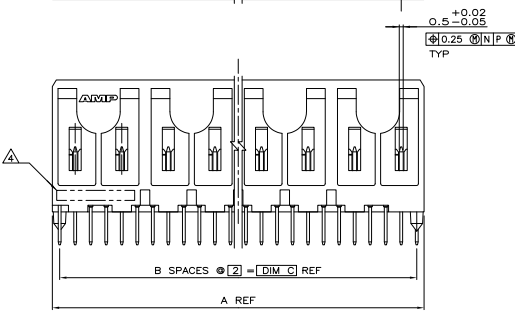
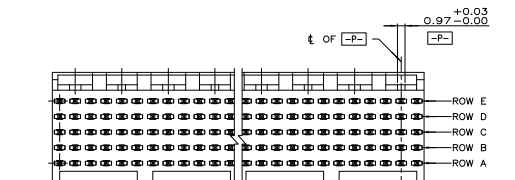
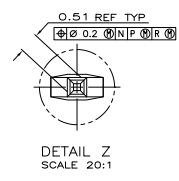


THIS DRAWING IS UNPUBLISHED
 ALL RIGHTS RESERVED
 BY TSS ELECTRONICS CORPORATION

REV	DATE	DESCRIPTION	BY	CHK	APP
AD	00				
0		RELEASED PER EC 0512-0317-04	22NOV04	BM	RW
01		REVISED PER ECO-09-024608	29OCT09	KK	AEG



- △ HOUSING MATERIAL: LIQUID CRYSTAL POLYMER
COLOR: NATURAL.
- △ CONTACT MATERIAL: PHOSPHOR BRONZE
- △ CONTACT FINISH: (A)
UNDERPLATE (ENTIRE CONTACT):
0.00127 MIN NICKEL PER SAE-AMS-QQ-N-290
ON MATING SURFACES;
CONFORMS TO ALL TESTING SPECIFIED FOR TELCORDIA
UNCONTROLLED ENVIRONMENT.
ON LEADS:
0.00381 MIN MATTE TIN PER ASTM B 545 OVER UNDERPLATE.
LUBRICATION (MIN MATING SURFACES):
SURFACE CONDITIONER AFTER PLATING.
- △ PART MARKING LOCATED APPROXIMATELY AS SHOWN.
- △ OBSOLETE PARTS: OBSOLETE CIS STREAMLINING PER D.RENAUD/D.SINISI



REV	DATE	DESCRIPTION	BY	CHK	APP
94	47	95.88	240	5223010-0	
46	23	47.88	120	5223010-4	
22	11	23.88	60	5223010-2	
10	5	11.88	30	5223010-1	

THIS DRAWING IS A CONTROLLED DOCUMENT.

DESIGNER	DATE	REVISED	BY	DATE	REVISED
BY	DATE	REVISED	BY	DATE	REVISED

ASSEMBLY, PIN, SIGNAL, VERTICAL
 Z-PACK 2mm FS, 5 ROW, SOLDER LEAD
 5mm MATING POST W/ 4.25mm SOLDER LEADS

SEE DATE SIZE DRAWING NO. A100779 C=5223010

CUSTOMER DRAWING