

4

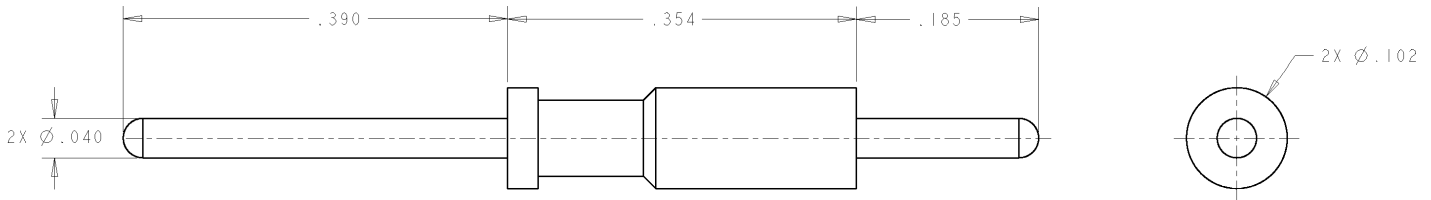
3

2

1

THIS DRAWING IS UNPUBLISHED. RELEASED FOR PUBLICATION 20  
 © COPYRIGHT 20 BY TYCO ELECTRONICS CORPORATION. ALL RIGHTS RESERVED.

| LOC | DIST | REVISIONS   |          |           |       |  |
|-----|------|-------------|----------|-----------|-------|--|
| P   | LTR  | DESCRIPTION | DATE     | DWN       | APVD  |  |
| GP  | 00   | A           | RELEASED | 09MAY2007 | RG DO |  |



- PART NUMBER CHANGES AND OR DESIGN CHANGES AFFECTING THE INTERCHANGEABILITY REQUIRE PRIOR TYCO APPROVAL AND AUTHORIZATION BY REVISION TO THIS DRAWING.
- MATERIAL:  
BRASS ALLOY
- FINISH:  
GOLD PLATE .000030 MIN THK. OVER NICKEL  
.000040 MIN. THK.
- ITEMS PROVIDED TO THIS SPECIFICATION TO BE PERMANENTLY IDENTIFIED ON THE CONTAINER WITH THE FOLLOWING IDENTIFIER:

YEAR 1 WEEK 1

TYCO PART NO.  
XXXXXXX-X

DATE CODE (e.g. 0216)  
XXXX

|             |             |
|-------------|-------------|
| AS SHOWN    | 1650226-1   |
| DESCRIPTION | PART NUMBER |

|  |  |  |   |
|--|--|--|---|
| <small>THIS DRAWING IS A CONTROLLED DOCUMENT FOR TYCO ELECTRONICS CORPORATION. IT IS SUBJECT TO CHANGE AND THE CONTROLLING ENGINEERING ORGANIZATION SHOULD BE CONTACTED FOR THE LATEST REVISION.</small> |  | DWN 09MAY2007<br>R. GRZYBOWSKI<br>CHK 09MAY2007<br>D. ORRIS<br>APVD 09MAY2007<br>S. FLICKINGER | <b>Tyco Electronics</b><br>Tyco Electronics<br>Harrisburg, PA 17105-3608      |
| DIMENSIONS:<br>INCHES<br>  | TOLERANCES UNLESS OTHERWISE SPECIFIED:<br>0 PLC ±<br>1 PLC ±<br>2 PLC ±.02<br>3 PLC ±.010<br>4 PLC ±<br>ANGLES ±<br>FINISH - | PRODUCT SPEC -<br>APPLICATION SPEC -<br>WEIGHT -   | NAME<br>PIN CONTACT, SIZE No. 20<br>PCB TAIL, .27 FRONT EXT.<br>.18 REAR EXT. |
| MATERIAL -   | FINISH -   | SIZE A3<br>CAGE CODE 00779<br>DRAWING NO. C-1650226  | RESTRICTED TO -   |
| ELCON CONTACTS   |  | CUSTOMER DRAWING   | SCALE 10:1 SHEET 1 OF 1 REV A   |

AMP 1470-19 REV 31MAR2000

PRO/ENGINEER DRAWING