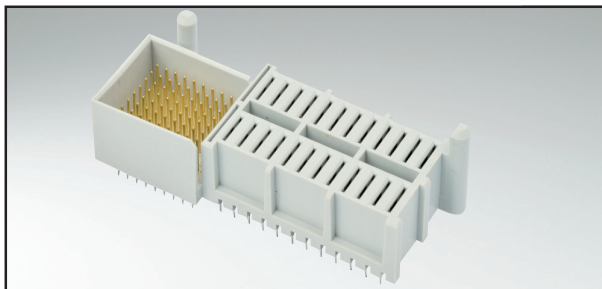


# POWER MODULE OUTPUT CONNECTOR

## Backplane Version - Press Fit

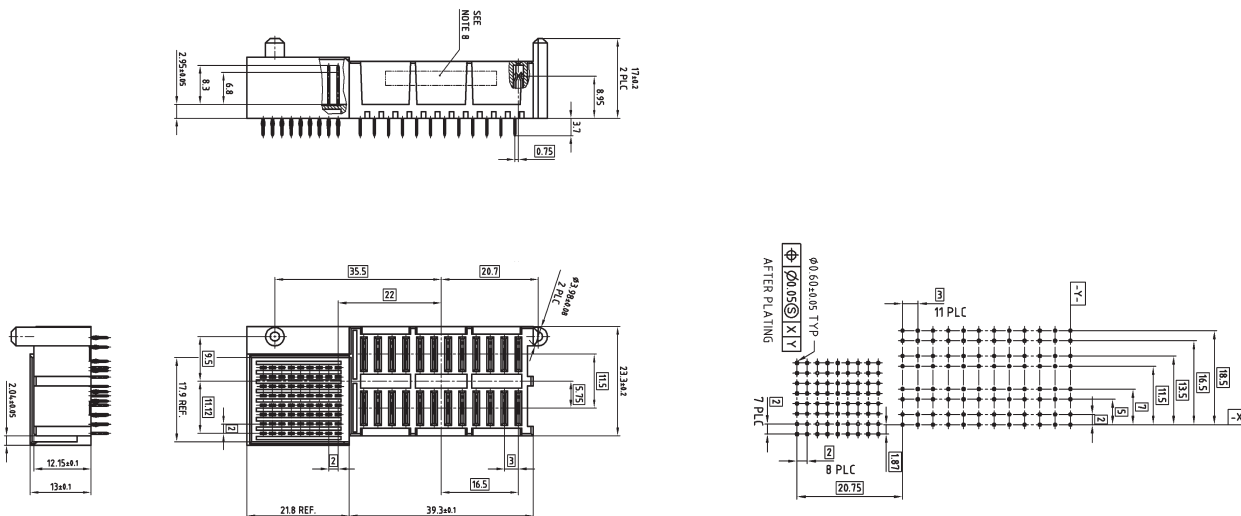


RoHS compliant

### DESCRIPTION

- MicroTCA specified connector for backplanes
- 24 power contacts and 72 signal contacts
- Symmetrical footprint
- "Eye of the needle" press fit zone

### PRODUCT DRAWING



### ORDER DATA

#### Design

MicroTCA power output connector - backplane version

#### Part Number

47-100001

The listed part numbers can be found on our website [www.conec.com](http://www.conec.com)