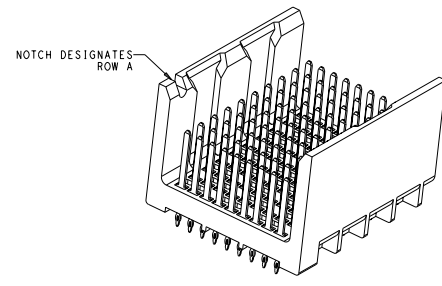
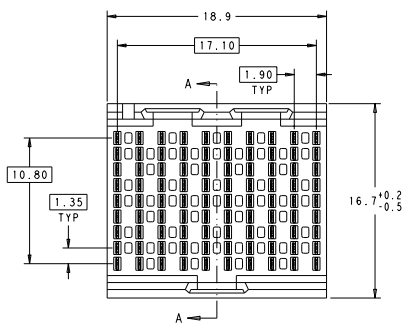
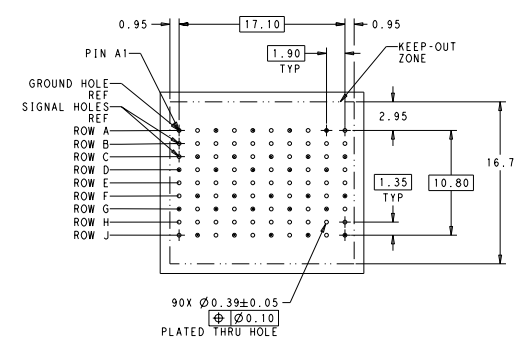


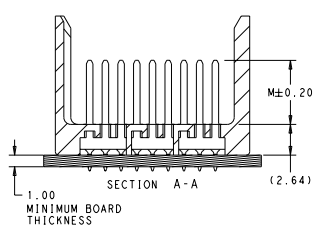
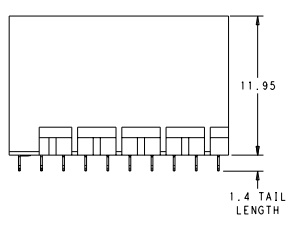
REV	DATE	DESCRIPTION	BY	CHK	APP
AD	00				
B		REVISED PER ECO-10-023860	18JAN2011	JAS	JE



- △ MATERIAL:
HOUSING: LCP, GLASS FILLED, UL94V-0.
TERMINALS: HIGH PERFORMANCE COPPER ALLOY.
- △ FINISH:
30μ" MIN GOLD IN CONTACT AREA. SELECTIVE TIN ON PCB TAILS. NICKEL OVERALL.
- △ FINISH:
30μ" MIN GOLD IN CONTACT AREA. SELECTIVE TIN-LEAD ON PCB TAILS. NICKEL OVERALL.



UNGUIDED BACKPLANE HOLE PATTERN (CONNECTOR SIDE)



DATE: 18 JAN 2011	TIME: 10:45:00	FILE: 18JAN2011	USER: JAS
PROJECT: 00779	DESCRIPTION: IMPACT, 3 PAIR, 10 COLUMN, HEADER UNGUIDED, LEFT END WALL SIGNAL MODULE, 0.39 PTH	SCALE: 1:1	SHEET: 1 OF 2
DATE: 18 JAN 2011	TIME: 10:45:00	FILE: 18JAN2011	USER: JAS
PROJECT: 00779	DESCRIPTION: IMPACT, 3 PAIR, 10 COLUMN, HEADER UNGUIDED, LEFT END WALL SIGNAL MODULE, 0.39 PTH	SCALE: 1:1	SHEET: 1 OF 2

8 7 6 5 4 3 2 1

DATE DRAWING IS SUPERSEDED BY THIS ELECTRONICS CORPORATION. ALL INFORMATION SHOULD BE KEPT.

REV. NO.		REVISIONS			
NO.	DATE	BY	CHK	APP	DESCRIPTION
AD	00				SEE SHEET 1

△	5.5	2007788-6
△	4.9	2007788-5
△	4.5	2007788-4
△	5.5	2007788-3
△	4.9	2007788-2
△	4.5	2007788-1
FINISH	DIM M	PART NUMBER

REFER TO WWW.TE.COM
FOR PRODUCT AVAILABILITY

TITLE: IMPACT, 3 PAIR, 10 COLUMN, HEADER UNGUIDED, LEFT END WALL SIGNAL MODULE, 0.39 PTH		DATE: 18 JAN 2011 DRAWN BY: [blank] CHECKED BY: [blank]		DATE: 18 JAN 2011 DRAWN BY: [blank] CHECKED BY: [blank]	
MATERIAL: [blank]		FINISH: [blank]		SEE TABLE	
CUSTOMER DRAWING		PART NUMBER: 007790-2007788		SHEET: 5.1 OF 2	