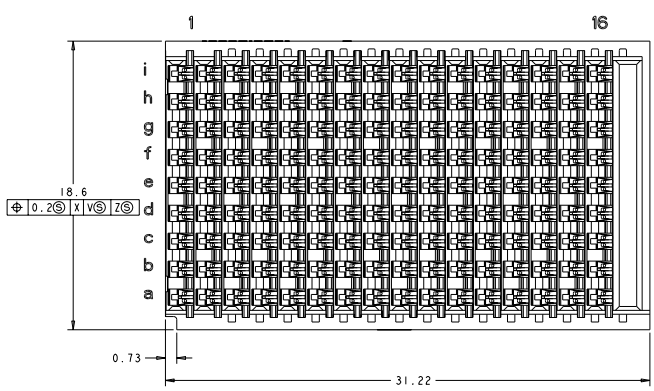
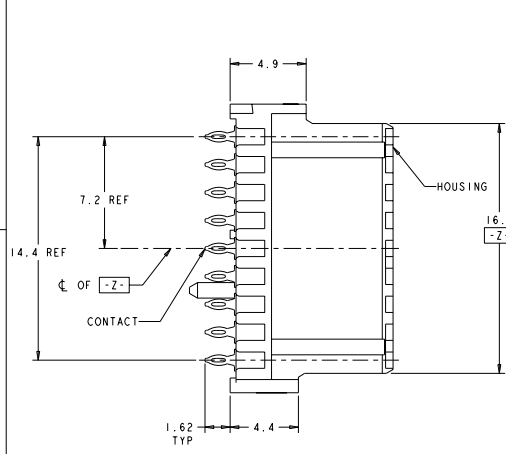
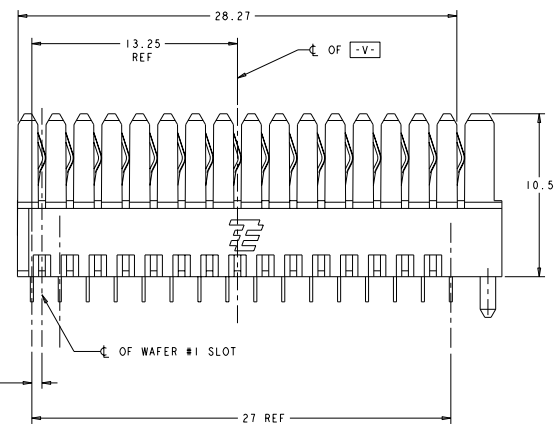
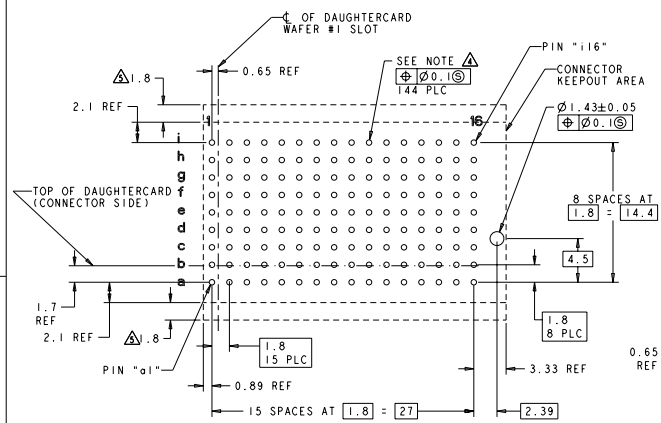


REV	DATE	DESCRIPTION	BY	CHK	APP
A	REV PER ECO-04-006525		DMORAN	BC	GG
B	REV PER ECO-08-023222		HOPKIN	RT	GG



- △ HOUSING: LCP, UL94V0, COLOR: BLACK.
CONTACT: PHOSPHOR BRONZE.
- △ FINISH: 1.27µm GOLD IN CONTACT AREA 1.27µm
MIN. TIN-LEAD ON PCB TAIL OVER 3.81µm MIN.
NICKEL OVER ALL.
- △ FINISH: 1.27µm GOLD IN CONTACT AREA 1.27µm
MIN. TIN ON PCB TAIL OVER 3.81µm MIN.
NICKEL OVER ALL.
- △ MANUFACTURING TOLERANCE FOR:
Ø0.56±0.05 FINISHED HOLE WITH Sn PB PLATING:
DRILLED HOLE = Ø0.65±0.02
COPPER PLATING = 0.025-0.050
Sn PB PLATING = 0.0038-0.0124
OR
Ø0.575±0.050 FINISHED HOLE WITHOUT Sn PB PLATING:
DRILLED HOLE = Ø0.65±0.02
COPPER PLATING = 0.025-0.050
- △ ADDITIONAL CONNECTOR-SIDE KEEPOUT AREA
REQUIRED IF CONNECTOR-SIDE EXTRACTION
TOOL IS TO BE USED.



PC BOARD LAYOUT
(CONNECTOR SIDE)
(SEE SHEET 2 FOR RTM)
SCALE: 5:1

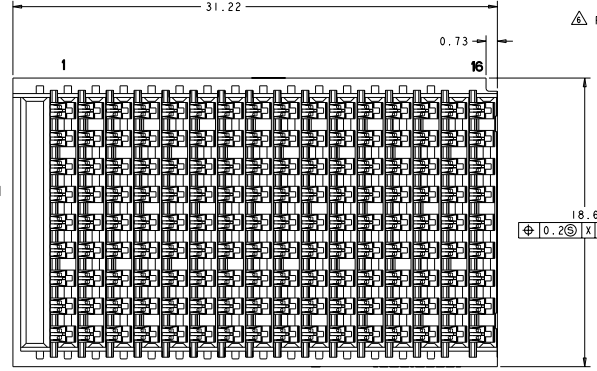
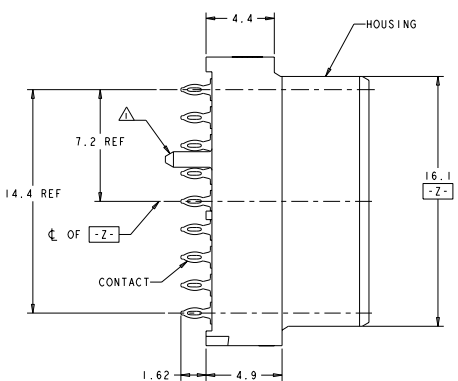
REV	DATE	DESCRIPTION	BY	CHK	APP
A	REV PER ECO-04-006525		DMORAN	BC	GG
B	REV PER ECO-08-023222		HOPKIN	RT	GG

REV	DATE	DESCRIPTION	BY	CHK	APP
A	REV PER ECO-04-006525		DMORAN	BC	GG
B	REV PER ECO-08-023222		HOPKIN	RT	GG

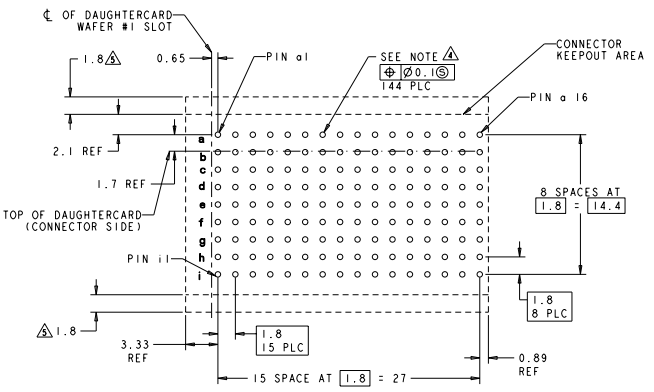
REV	DATE	DESCRIPTION	BY	CHK	APP
A	REV PER ECO-04-006525		DMORAN	BC	GG
B	REV PER ECO-08-023222		HOPKIN	RT	GG

REAR TRANSITION MODULE APPLICATION

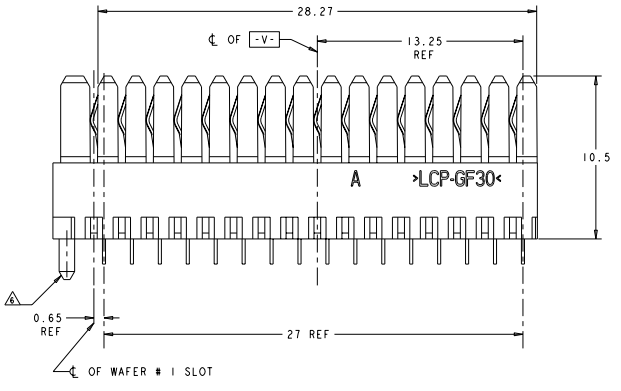
REV	DATE	DESCRIPTION	BY	CHK	APP
00		SEE SHEET 1			



△ PLASTIC ALIGNMENT PIN MUST BE REMOVED FLUSH TO HOUSING BODY PRIOR TO INSERTION INTO RTM LAYOUT



PC BOARD REAR TRANSITION MODULE (CONNECTOR SIDE) SCALE 5:1



REV	DATE	DESCRIPTION	BY	CHK	APP
00	11NOV2002	CONSOLE			
<p>11NOV2002</p> <p>168-2812</p> <p>CONSOLE</p> <p>116-13856</p> <p>00778</p>					
<p>CONSOLE</p> <p>116-13856</p> <p>00778</p>			<p>11NOV2002</p> <p>168-2812</p> <p>CONSOLE</p> <p>116-13856</p> <p>00778</p>		
<p>CONSOLE</p> <p>116-13856</p> <p>00778</p>			<p>11NOV2002</p> <p>168-2812</p> <p>CONSOLE</p> <p>116-13856</p> <p>00778</p>		