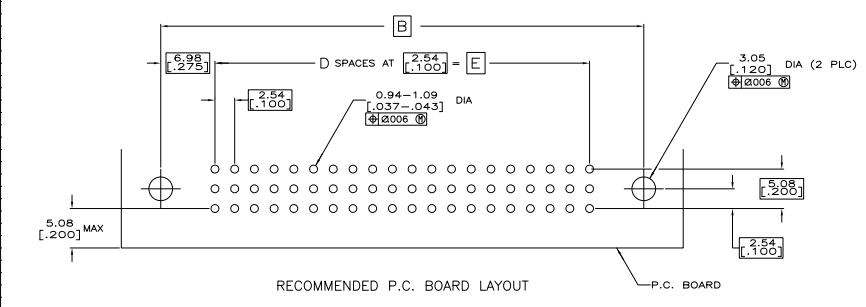
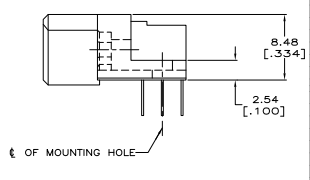
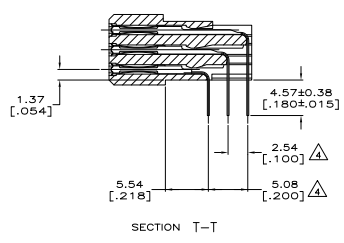
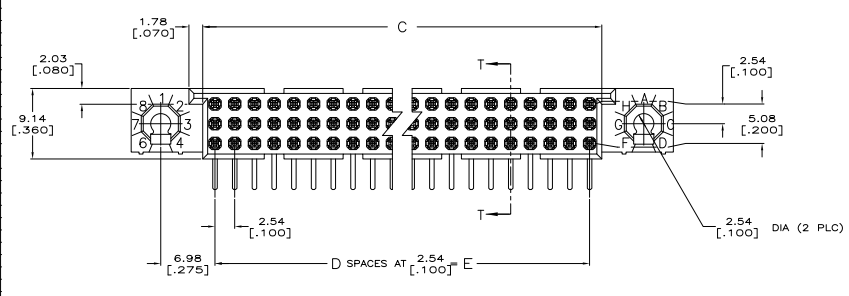
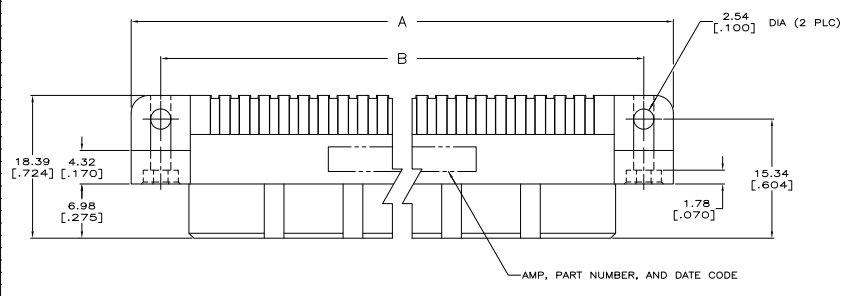


THIS DRAWING IS UNPUBLISHED
 ALL RIGHTS RESERVED

REV	DATE	DESCRIPTION	BY	CHK
AD 25				
V2		REVISED PER EDD-11-004835	11MM11	RK HMR



THIS DRAWING IS A CONTROLLED DOCUMENT.		DATE DESIGNED	DATE REVISED	TE Connectivity	
DRAWN BY		DESIGNED BY	REVISED BY	HDI, 3 ROW, RECEPTACLE ASSEMBLY, 4.57 [180] LONG SOLDER TAILS, 00076 [000000] GOLD PLATE	
CHECKED BY		APPROVED BY	DATE	SIZE	DATE DESIGNED
DRAWN BY		DATE	DATE	A1	000779
DRAWN BY		DATE	DATE	4.1	532431
DRAWN BY		DATE	DATE	1	2
DRAWN BY		DATE	DATE	V2	

488 12/11

THIS DRAWING IS UNPUBLISHED
 ALL RIGHTS RESERVED

REV	DATE	DESCRIPTION	BY	CHK	APP
AD 25		SEE SHEET 1			

- △ HOUSING MATERIAL: THERMOPLASTIC, COLOR-NATURAL.
- △ CONTACT MATERIAL: COPPER ALLOY.
- △ CONTACT FINISH: 00127--00254 [0.00050--0.00100] NICKEL UNDERPLATE ALL OVER; 00076 [0.00030] GOLD PLATE IN CONTACT AREA; TIN-LEAD PLATED SOLDER TAILS.
- △ SOLDER TAILS MUST FIT HOLE PATTERN AS SHOWN ON THE RECOMMENDED P.C. BOARD LAYOUT.
- 5. DIMENSIONS IN BRACKETS ARE IN INCHES.
- △ HOUSINGS WITH CENTER MOUNTING IS RECOMMENDED FOR ASSEMBLIES HAVING 75 CONTACTS PER ROW OR MORE.
- △ PART NUMBER IS OBSOLETE.
- △ OBSOLETE PARTS: OBSOLETE CIS STREAMLINING PER D.RENAUD/D.SINISI

27.94	11	31.09	41.91	49.53	36	2-532431-4
[1.100]		[1.224]	[1.650]	[1.950]		
48.26	19	51.41	62.23	69.85	60	2-532431-3
[1.900]		[2.024]	[2.450]	[2.750]		
43.18	17	46.33	57.15	64.77	54	2-532431-2
[1.700]		[1.824]	[2.250]	[2.550]		
144.78	57	147.93	158.75	166.37	174	2-532431-1
[5.700]		[5.824]	[6.250]	[6.550]		
81.28	32	84.43	95.25	102.87	99	2-532431-0
[3.200]		[3.324]	[3.750]	[4.050]		
210.82	83	213.97	224.79	232.41	252	1-532431-9
[8.300]		[8.424]	[8.850]	[9.150]		
243.84	96	246.99	257.81	265.43	291	1-532431-8
[9.600]		[9.724]	[10.150]	[10.450]		
251.46	99	254.61	265.43	273.05	300	1-532431-7
[9.900]		[10.024]	[10.450]	[10.750]		
238.76	94	241.91	252.73	260.35	285	1-532431-6
[9.400]		[9.524]	[9.950]	[10.250]		
226.06	89	229.21	240.03	247.65	270	1-532431-5
[8.900]		[9.024]	[9.450]	[9.750]		
213.36	84	216.51	227.33	234.95	255	1-532431-4
[8.400]		[8.524]	[8.950]	[9.250]		
200.66	79	203.81	214.63	222.25	240	1-532431-3
[7.900]		[8.024]	[8.450]	[8.750]		
187.96	74	191.11	201.93	209.55	225	1-532431-2
[7.400]		[7.524]	[7.950]	[8.250]		
175.26	69	178.41	189.23	196.85	210	1-532431-1
[6.900]		[7.024]	[7.450]	[7.750]		
162.56	64	165.71	176.53	184.15	195	1-532431-0
[6.400]		[6.524]	[6.950]	[7.250]		
149.86	59	153.01	163.83	171.45	180	532431-9
[5.900]		[6.024]	[6.450]	[6.750]		
137.16	54	140.31	151.13	158.75	165	532431-8
[5.400]		[5.524]	[5.950]	[6.250]		
124.46	49	127.61	138.43	146.05	150	532431-7
[4.900]		[5.024]	[5.450]	[5.750]		
111.76	44	114.91	125.73	133.35	135	532431-6
[4.400]		[4.524]	[4.950]	[5.250]		
99.06	39	102.21	113.03	120.65	120	532431-5
[3.900]		[4.024]	[4.450]	[4.750]		
86.36	34	89.51	100.33	107.95	105	532431-4
[3.400]		[3.524]	[3.950]	[4.250]		
78.74	31	81.89	92.71	100.33	96	532431-3
[3.100]		[3.224]	[3.650]	[3.950]		
73.66	29	76.81	87.63	95.25	90	532431-2
[2.900]		[3.024]	[3.450]	[3.750]		
60.96	24	64.11	74.93	82.55	75	532431-1
[2.400]		[2.524]	[2.950]	[3.250]		
E	D	C	B	A	POSN	PART NUMBER

△ OBSOLETE

THIS DRAWING IS A CONTROLLED DOCUMENT. **TE** CONNECTIVITY

DATE: 00779 (0000030) GOLD PLATE

DESCRIPTION: HDI, 3 ROW, RECEPTACLE ASSEMBLY, 4.57 [180] LONG SOLDER TAILS, 00076 [0.00030] GOLD PLATE

REVISED TO: 00779 (0000030) GOLD PLATE

CUSTOMER DRAWING

DATE: 4.1 SHEET: 2 OF 2