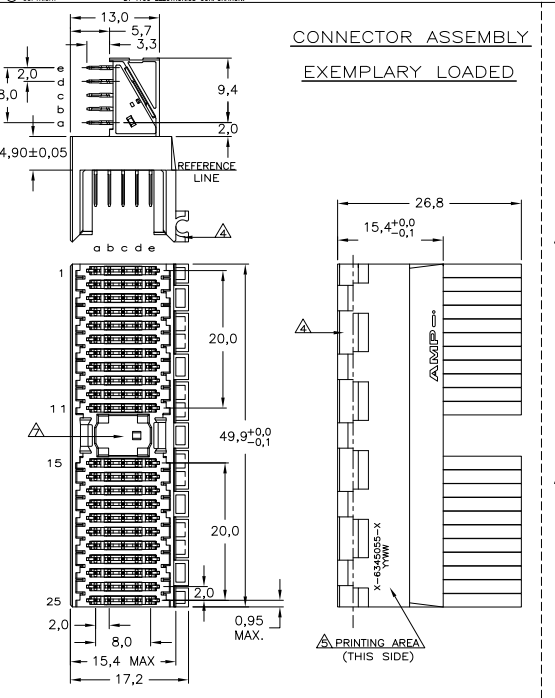
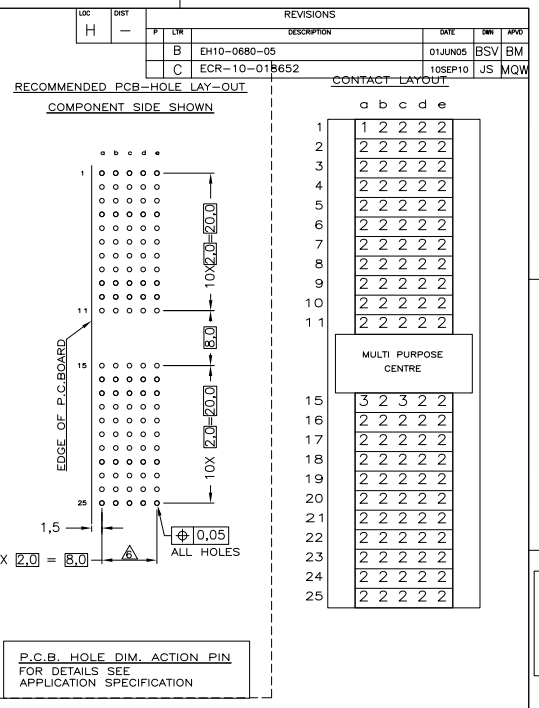
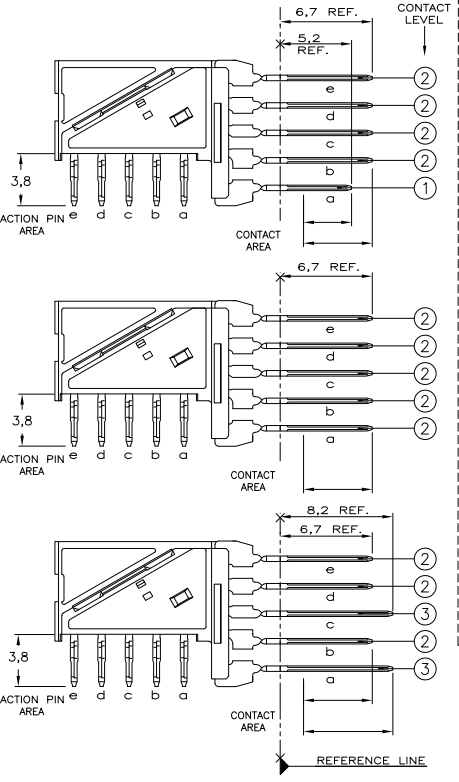


THIS DRAWING IS UNPUBLISHED. RELEASED FOR PUBLICATION
 © COPYRIGHT BY TYCO ELECTRONICS CORPORATION. ALL RIGHTS RESERVED.



- NOTES:**
- 1 MATERIAL HOUSING : GREY GLASSFILLED POLYESTER
UL-RATING V0
 - CONTACT : PHOSPHORBRONZE
 - GENERAL PLATING SPECIFICATION: UNDERPLATING (ENTIRE CONTACT): 1,27µm NICKEL MIN. AND ACTION PIN: 0,5µm TIN MIN.
FOR PLATING OF MATING SURFACES SEE APPLICABLE SPECIFICATION REFERENCE FOR EACH DASH NUMBER.
CONFORMS TO ALL TESTING ACCORDING IEC 61076-4-101 PERFORMANCE LEVEL 2.
 - CONNECTOR ASSEMBLY WITH LATCH HINGE FOR CABLE CONNECTOR.
 - CONNECTOR PRINTED WITH PARTNUMBER AND DATECODE
 - PLATED-THROUGH HOLES AT 2x2mm SQUARE GRID.
 - AREA FOR KEYING PART (BASIC PART NUMBER 100525).

CONTACT DIMENSIONS



MP 1471-9 REV 31MM2000
 Y:\AutoCAD_PROJECTS\Msojij_CAD WORK\1870\CORRECTED\6345055.c_c_A.dwg

THIS DRAWING IS A CONTROLLED DOCUMENT.

DIMENSIONS: mm	TOLERANCES UNLESS OTHERWISE SPECIFIED	DRW: K.N.KIRAN 25AUG2004	CHK: S.MOJIJ 22062004	APD: S.MOJIJ 22062004	NAME: B.MOJIJ	DATE: 25AUG2004	REV: 1
MATERIAL: -	FINISH: -	PRODUCT SPEC: 108-19082	APPLICATION SPEC: 114-19029	WEIGHT: -	SIZE: A2	ONE CODE: 00779	DRAWING NO: C-6345055
CUSTOMER DRAWING		Tyco Electronics Corporation 110 POS. RIGHT ANGLE MALE CONNECTOR ASSEMBLY		1-8345055-1		6345055-1	
SCALE: 5:1		SHEET: 1 OF 1		REV: C		RESTRICTED TO: -	