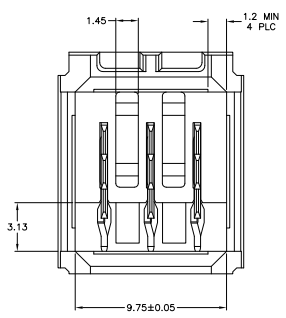
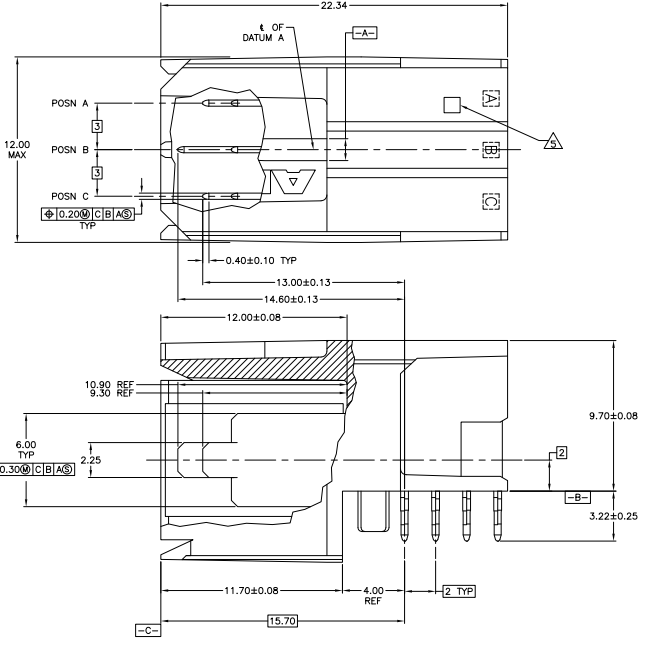
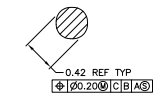
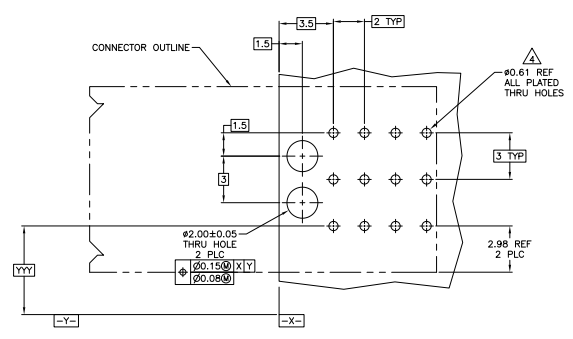
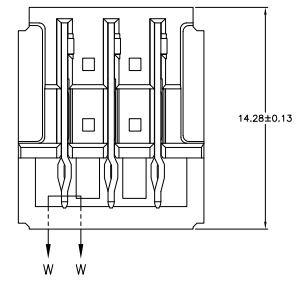


REV	DATE	DESCRIPTION	BY	CHK	APP
AD 00					
		REVISED PER EDD-11-004703			



- △ HOUSING: POLYESTER, GRAY, UL 94V-0.
CONTACT: PHOSPHOR BRONZE.
- △ CONTACT: MATING AREA: 1.27µm MIN GOLD OR 0.08µm MIN GOLD OVER 0.78µm MIN PALLADIUM-NICKEL.
ACTION PIN AREA: 0.5µm MIN TIN PLATE.
ALL OVER 1.27µm MIN NICKEL UNDERPLATE.
- △ CONTACT LUBRICATION WITH BELCORE APPROVED LUBRICANT. TECHNICAL REFERENCE: TR-NWT-001217 ISSUE 1, SEPT 1992.
- △ REFERENCE APPLICATION SPEC 114-1103 FOR RECOMMENDED PLATED THRU HOLE DIAMETER AND PLATING THICKNESS.
- △ NUMBER "2" MARKED IN THIS AREA.
- △ HOUSING: POLYESTER, GRAY, UL 94V-0.
CONTACT: HI-CURRENT COPPER ALLOY.
- 7 CURRENT RATING 10A/CONTACT FOR PHOS BRONZE CONTACT AND 16A/CONTACT FOR HIGH CURRENT COPPER ALLOY CONTACTS PER PRODUCT SPEC 108-1651.



SECTION W-W
 SCALE 40:1

REV	DATE	DESCRIPTION	BY	CHK	APP
△					
△					
△					
△					

REMARKS: PART NUMBER

THIS DRAWING IS A CONTROLLED DOCUMENT.		REV	DATE	DESCRIPTION	BY	CHK	APP
UNLESS OTHERWISE SPECIFIED:	UNIT: MILLIMETERS	1					
1. DIMENSIONS	2. FINISHES	3. PATTERNS	4. MATERIALS	5. TOLERANCES	6. SURFACE FINISH	7. COATING SPEC	8. OTHER
SEE TABLE	SEE TABLE	SEE TABLE	SEE TABLE	SEE TABLE	SEE TABLE	SEE TABLE	SEE TABLE
CUSTOMER DRAWING		DATE	SIZE	SCALE	DRAWING NO	REV	REV
		A1	00779	5223963			