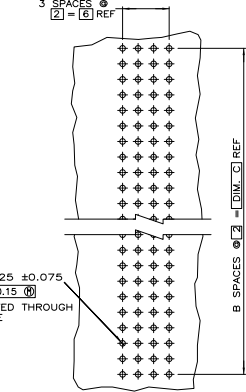
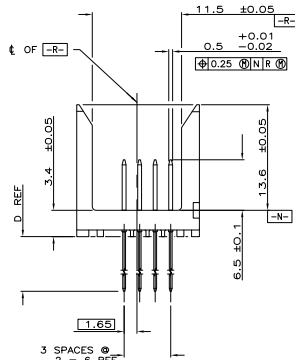
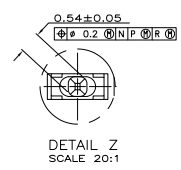


RECOMMENDED CIRCUIT PATTERN  
 PER IPC-D300 TYPE II, CLASS C  
 (COMPONENT SIDE)



- △ HOUSING MATERIAL: LIQUID CRYSTAL POLYMER PER ASTM D5138 LCP000 G30A 32250, COLOR: NATURAL.
- △ CONTACT MATERIAL: PHOSPHOR BRONZE.
- △ CONTACT FINISH:  
 UNDERPLATE (ENTIRE CONTACT):  
 0.00127 MIN NICKEL.  
 ON MATING SURFACES:  
 CONFORMS TO ALL TESTING SPECIFIED FOR TELCORDIA UNCONTROLLED ENVIRONMENT.  
 ON LEADS:  
 0.0006 MIN TIN-LEAD OVER UNDERPLATE.  
 LUBRICATION (ENTIRE CONTACT):  
 SURFACE CONDITIONER PER AMP SPEC 112-1002 AFTER PLATING.
- △ PART MARKING PER AMP INCORPORATED SPECIFICATION 115-9009, LOCATED APPROXIMATELY AS SHOWN.
- △ DIMENSION APPLIES WHEN SEATED ON PRINTED CIRCUIT BOARD.
- △ OBSOLETE PARTS: OBSOLETE CIS STREAMLINING PER D.RENAUD/D.SINISI



△ OBSOLETE	13.6	70	35	71.88	144	536526-5
	13.6	94	47	95.88	192	536526-4
	13.6	46	23	47.88	96	536526-3
	13.6	22	11	23.88	48	536526-2
OBSOLETE	13.6	10	5	11.88	24	536526-1
	D	C	B	A	NO OF POSN	PART NUMBER

THIS DRAWING IS A CONTROLLED DOCUMENT.

DESIGNED BY: 07/81  
 DRAWN BY: 07/81  
 CHECKED BY: 07/81  
 APPROVED BY: 07/81

DATE: 07/81  
 DRAWING NO: A100779  
 CUSTOMER DRAWING

TYS Electronics Corporation  
 Harrisburg, PA 17105-3608

PN ASSEMBLY, SIGNAL MODULE, Z-PACK 2mm FB, 2mm

REVISIONS: 1, 1, 1, 1