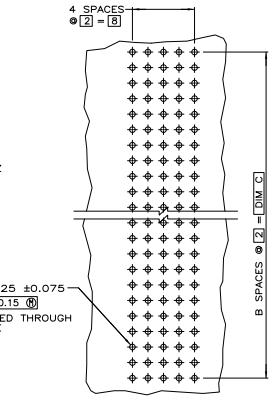
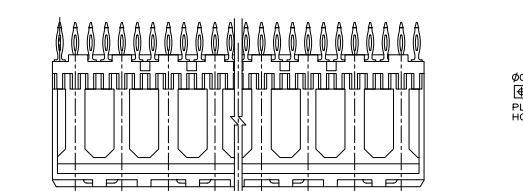
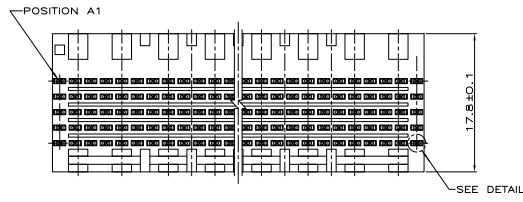
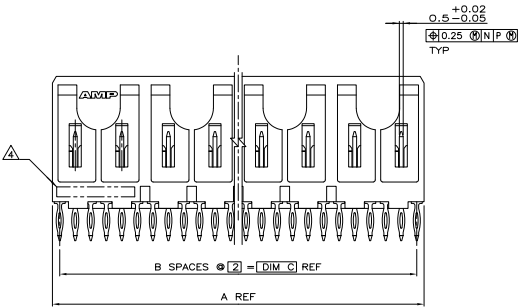
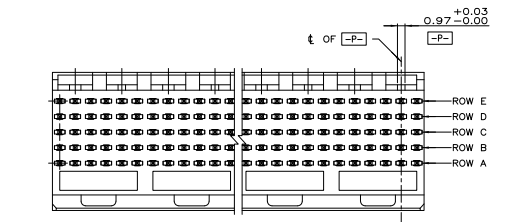


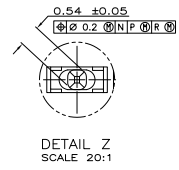
THIS DRAWING IS UNPUBLISHED  
 UNLESS OTHERWISE SPECIFIED  
 ALL RIGHTS RESERVED

REV	DATE	DESCRIPTION	BY	CHK	APP
AD 47					
0		RELEASED PER EC 0512-0317-04	19M0V04	BM	RW
01		REVISED PER EC0-09-024606	290CT09	KK	AEG



RECOMMENDED CIRCUIT PATTERN  
(COMPONENT SIDE)

- △ HOUSING MATERIAL: LIQUID CRYSTAL POLYMER  
COLOR: NATURAL.
- △ CONTACT MATERIAL: PHOSPHOR BRONZE
- △ CONTACT FINISH: (B)  
UNDERPLATE (ENTIRE CONTACT):  
0.00127 MIN NICKEL PER SAE-AMS-QQ-N-290  
ON MATING SURFACES:  
CONFORMS TO ALL TESTING SPECIFIED FOR TELCORDIA  
UNCONTROLLED ENVIRONMENT.  
ON LEADS:  
0.0006 MIN MATTE TIN PER ASTM B 545 OVER UNDERPLATE.  
LUBRICATION (MIN MATING SURFACES):  
SURFACE CONDITIONER AFTER PLATING.
- △ PART MARKING LOCATED APPROXIMATELY AS SHOWN.
- △ DIMENSION APPLIES WHEN SEATED ON PRINTED CIRCUIT BOARD.
- △ OBSOLETE PARTS: OBSOLETE CIS STREAMLINING PER D.RENAUD/D.SINISI



DETAIL Z  
SCALE 20:1

REV	DATE	DESCRIPTION	BY	CHK	APP
130	65	131.88	330	-	5223002-1
118	59	119.88	300	-	5223002-0
106	53	107.88	270	-	5223002-9
94	47	95.88	240	-	5223002-8
82	41	83.88	210	-	5223002-7
70	35	71.88	180	-	5223002-6
58	29	59.88	150	-	5223002-5
46	23	47.88	120	-	5223002-4
34	17	35.88	90	-	5223002-3
22	11	23.88	60	-	5223002-2
10	5	11.88	30	-	5223002-1

THIS DRAWING IS A CONTROLLED DOCUMENT. **McMaster-Carr** is the master. **TECO** is the master. **TECO** is the master.

ASSEMBLY, PIN, SIGNAL, VERTICAL  
Z-PACK 2mm FB, 5 ROW, PRESS FIT LEADS

DATE: 00779  
REV: 0  
REVISED PER: 0512-0317-04

CUSTOMER DRAWING