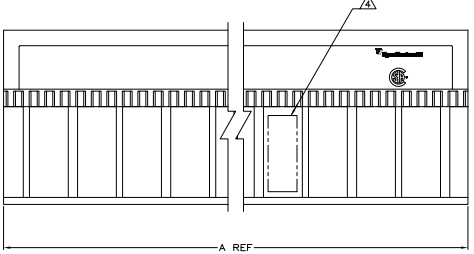
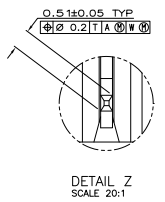
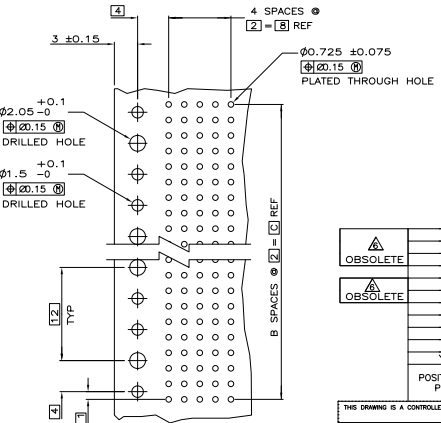
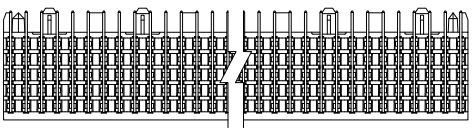
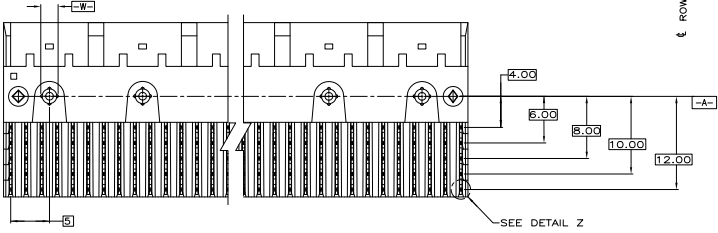
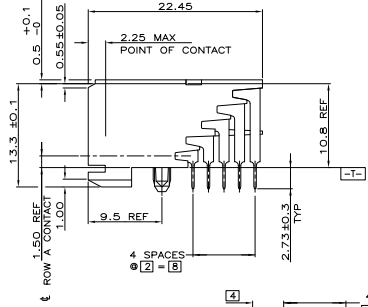
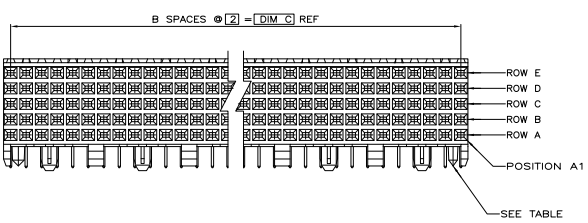


THIS DRAWING IS UNPUBLISHED. REPRODUCED FOR INFORMATION. ALL RIGHTS RESERVED.

REV	DATE	DESCRIPTION	BY	CHK	APP
01		REVISED PER ECO-08-009053	14APR04	DH	AS
02		REVISED PER ECO-10-000444	20MAY10	KK	HR



- △ HOUSING MATERIAL: LIQUID CRYSTAL POLYMER
COLOR: NATURAL.
- △ CONTACT MATERIAL: PHOSPHOR-BRONZE.
- △ CONTACT FINISH:(A)
UNDERPLATE (ENTIRE CONTACT):
0.00127 MIN NICKEL PER SAE-AMS-QQ-N-290
ON MATING SURFACES:
CONFORMS TO ALL TESTING SPECIFIED FOR TELCORDIA
UNCONTROLLED ENVIRONMENT.
ON LEADS:
0.00381 MIN MATTE TIN PER ASTM B 545 OVER UNDERPLATE.
LUBRICATION (MIN MATING SURFACES):
SURFACE CONDITIONER AFTER PLATING.
- △ PART MARKING LOCATED APPROXIMATELY AS SHOWN.
- △ OBSOLETE PARTS: OBSOLETE CIS STREAMLINING PER D.RENAUD/D.SINISI



REV	DATE	DESCRIPTION	BY	CHK	APP	
NO	130	65	131.88	350	4-6223004-1	
OBSOLETE	NO	118	59	119.88	300	4-6223004-0
OBSOLETE	NO	106	53	107.88	270	4-6223004-9
NO	94	47	95.88	240	5223004-8	
NO	82	41	83.88	210	4-6223004-7	
OBSOLETE	NO	70	35	71.88	180	4-6223004-6
NO	58	29	59.88	150	5223004-5	
NO	46	23	47.88	120	5223004-4	
NO	34	17	35.88	90	5223004-3	
NO	22	11	23.88	60	5223004-2	
YES	10	3	11.88	30	5223004-1	

THIS DRAWING IS A CONTROLLED DOCUMENT.

INCHES: 1/16, 1/8, 3/16, 1/4, 3/8, 1/2, 5/8, 3/4, 7/8, 1, 1 1/8, 1 1/4, 1 3/4, 2, 2 1/4, 2 3/4, 3, 3 1/4, 3 3/4, 4, 4 1/4, 4 3/4, 5, 5 1/4, 5 3/4, 6, 6 1/4, 6 3/4, 7, 7 1/4, 7 3/4, 8, 8 1/4, 8 3/4, 9, 9 1/4, 9 3/4, 10

MILLIMETERS: 1, 2, 3, 4, 5, 6, 8, 10, 12, 15, 20, 25, 30, 40, 50, 60, 75, 100

DATE: 10/7/79
DRAWN BY: [Signature]
CHECKED BY: [Signature]
APPROVED BY: [Signature]

ASSEMBLY, RECEPTACLE, SIGNAL, RIGHT ANGLE, Z-PACK 2mm FB, 5 ROW, SOLDER LEAD

REV: A1
DATE: 10/7/79
DRAWN BY: [Signature]
CHECKED BY: [Signature]
APPROVED BY: [Signature]

CUSTOMER DRAWING

RECOMMENDED CIRCUIT PATTERN
PER IPC-D300 TYPE II, CLASS C
(COMPONENT SIDE)