

4

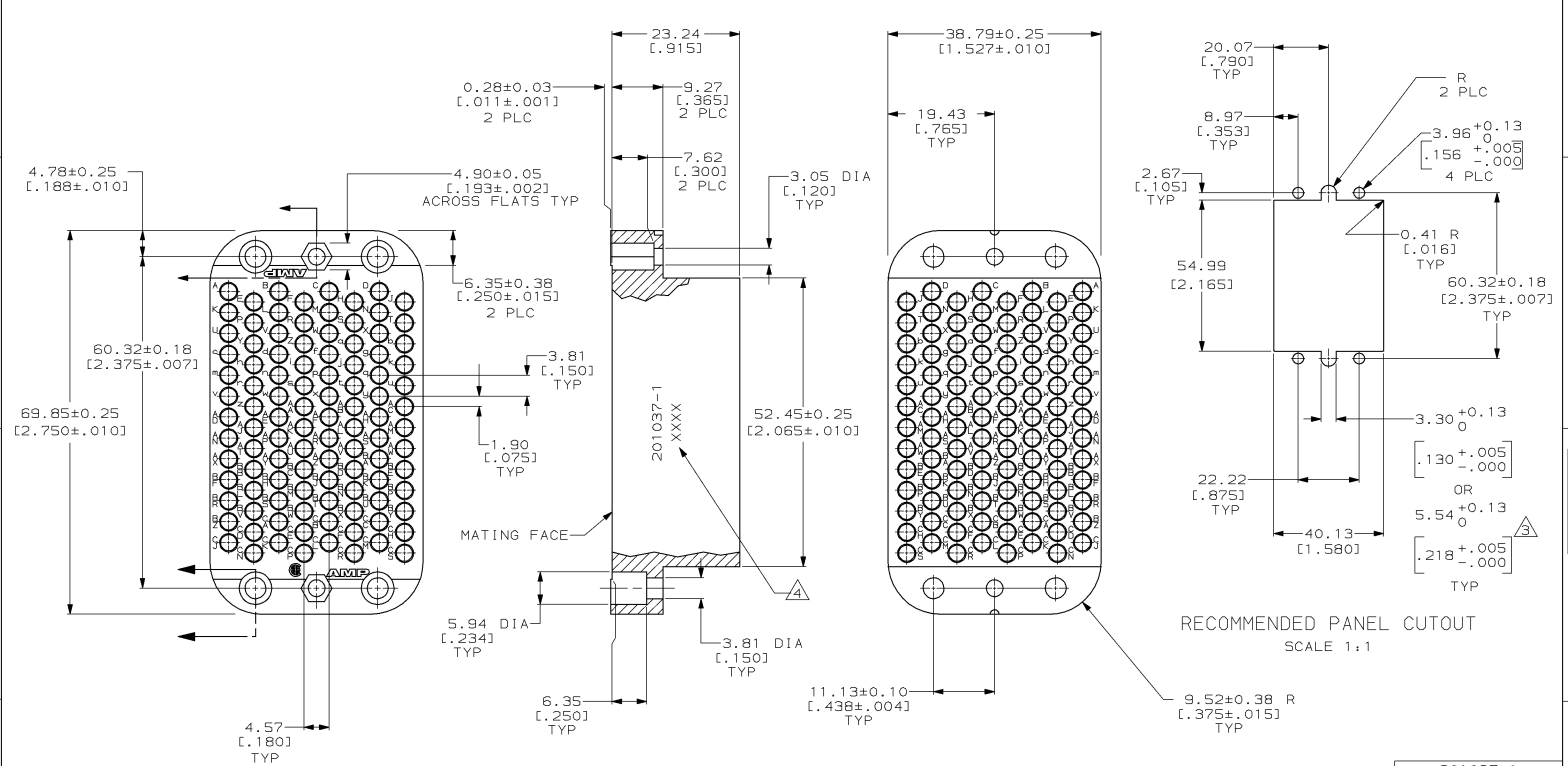
3

2

1

THIS DRAWING IS UNPUBLISHED. RELEASED FOR PUBLICATION
 © COPYRIGHT 19 BY AMP INCORPORATED. ALL RIGHTS RESERVED.

LOC	DIST	REV	DESCRIPTION	DATE	BY	APPD
FT	8					
		AD	REDRAWN W/OUT CHANGE PER EC 0020-1345-95	13 MAR 96	-	GS
		AE	REV PER EC 0320-82-97	13 AUG 97	BC	GS



- 1 PHENOLIC PER MIL-M-14, TYPE CFG, BLACK.
- 2. MATES WITH BLOCK 201345 AND ACCOMODATES TYPE II, TYPE III+, OR TYPE VI #16 PIN OR SOCKET CONTACTS.
- 3 OPTIONAL SIZE FOR JACKSCREWS.
- 4 AMP PART NO THIS AREA. DATE CODE AT AMP'S OPTION.

201037-1		PART NUMBER	
THE DIMENSIONS SHOWN ON THIS DRAWING ARE UNLESS OTHERWISE SPECIFIED IN MILLIMETERS OR INCHES. DIMENSIONS IN INCHES: 0.0005 INCHES (0.0127 MM) TYPICAL TOLERANCE UNLESS OTHERWISE SPECIFIED.		DWN: C. OBERMAN 13 MAR 96 CHK: S. STONE 18 MAR 96 DRN: R. STEINHAEUER 11 APR 96 NAME: AMP BLOCK, FEMALE, 104 POSITION, MINIATURE RECTANGULAR, M SERIES APPLICATION SPEC: - SIZE: A2 CASE CODE: 00779 HEIGHT: - FINISH: -	AMP Incorporated Harrisburg, PA 17105-3608 DRAWING NO: 201037 SCALE: 2:1 SHEET: 1 OF 1 REV: AF
CUSTOMER DRAWING			