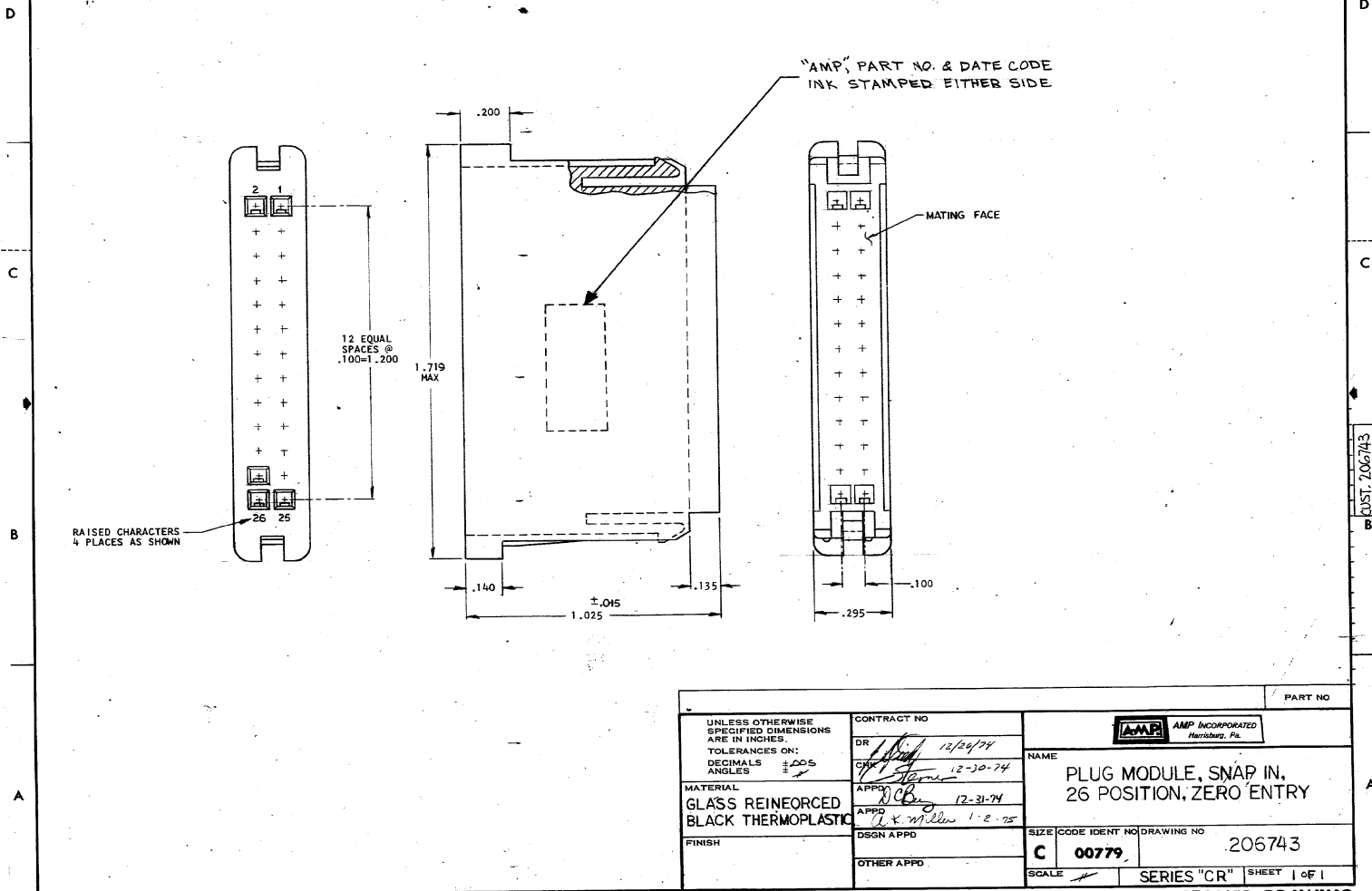


DRAWING MADE IN THIRD ANGLE PROJECTION

© COPYRIGHT 1974 AMP INCORPORATED, HARRISBURG, PA. ALL INTERNATIONAL RIGHTS RESERVED. AMP INCORPORATED PRODUCTS COVERED BY U. S. AND FOREIGN PATENTS AND/OR PATENTS PENDING.

206743-1 1. AS SHOWN

REVISIONS					
P	F	ZONE/LTR	DESCRIPTION	DATE	APPROVED
0	1		RELEASED JMS 5088-97	12/27/74	
1	1	A	REV PER ECH DF-OS82	MS 12-18-74	DE 3/2/79



UNLESS OTHERWISE SPECIFIED DIMENSIONS ARE IN INCHES.		CONTRACT NO.		AMP INCORPORATED Harrisburg, Pa.	
TOLERANCES ON: DECIMALS ±.005 ANGLES ±		DR <i>[Signature]</i> 12/29/74	NAME		
MATERIAL GLASS REINFORCED BLACK THERMOPLASTIC		CHK <i>[Signature]</i> 12-30-74	PLUG MODULE, SNAP IN, 26 POSITION, ZERO ENTRY		
FINISH		APPD <i>[Signature]</i> 12-31-74	SIZE CODE IDENT NO DRAWING NO		
		DSGN APPD <i>[Signature]</i> 1-2-75	C 00779 206743		
		OTHER APPD	SCALE # SERIES "CR" SHEET 1 OF 1		

CUSTOMER DRAWING

AMP 1471-6 (7-73)

DUST. 206743