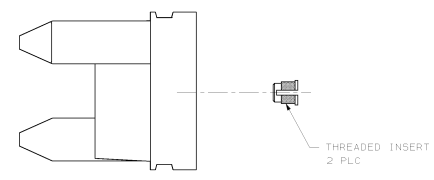
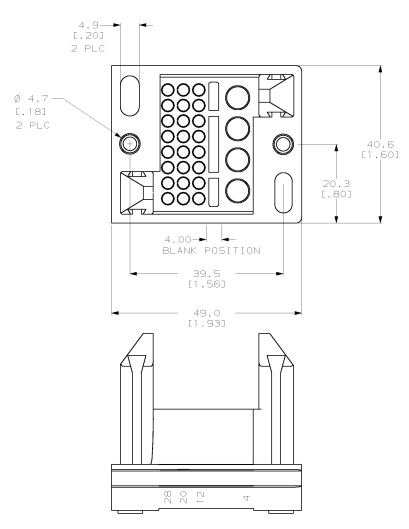
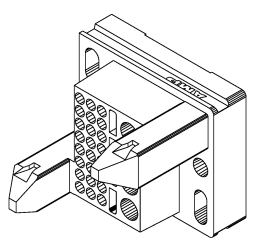
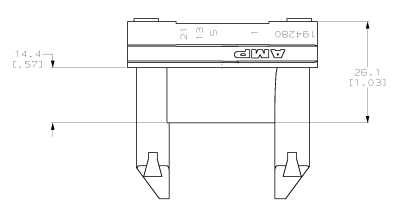


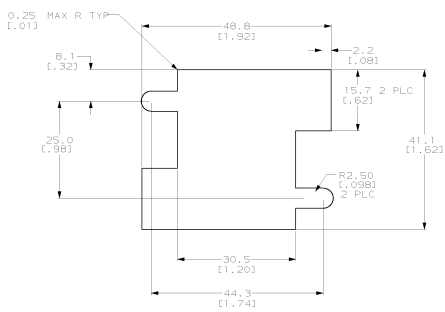
REV. NO.		REVISIONS	
CH	11	0	RELEASED FOR PRODUCTION
		A	EC 0820-0118-99

1. MATERIAL: POLYESTER PCT, BLACK.
2. POSITIONS 1-4 ARE FOR 5mm CONTACTS.
3. POSITIONS 5-28 ARE FOR SIZE 16 CONTACTS.
4. ALL DIMENSIONS EXCEPT PANEL CUT OUTS ARE REFERENCE ONLY.

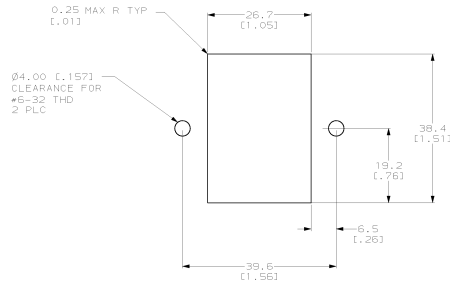


#6-32 THREADED INSERT (PEAR MOUNTED)	194280-4
NO. INSERTS	194280-1
DESCRIPTION	PART NO.

MATERIALS		FINISHES		DIMENSIONS		DRAWING	
STRENGTH	IN LBS	TENSILE	YIELD	MIN.	MAX.	DATE	BY
<b>AMP</b> Incorporated Harrisburg, PA 17105-8608				<b>AMP POWER</b> * Multi Pin Plus PLUS, 28 POSITION			
POLYESTER PCT, BLACK				A1 00779		194280	
CUSTOMER DRAWING				1 2 A			



RECOMMENDED FLOAT MOUNT PANEL CUTOUT  
 EXTERNAL VIEW



RECOMMENDED STATIONARY MOUNT PANEL CUTOUT  
 EXTERNAL VIEW

THIS DRAWING IS A CONTROLLED DOCUMENT.		REV. 1	DATE	17/06/79
APPROVED	BY	DATE	REVISED	
DESIGNED	DATE	17/06/79	REVISED	
DRAWN	DATE	17/06/79	REVISED	
CHECKED	DATE	17/06/79	REVISED	
DATE	17/06/79	REVISED		
MATERIAL		QUANTITY	UNIT	REMARKS
PANEL		1	PCB	CUSTOMER DRAWING
PART NO.		00779	194280	
REV. 1		DATE 17/06/79		