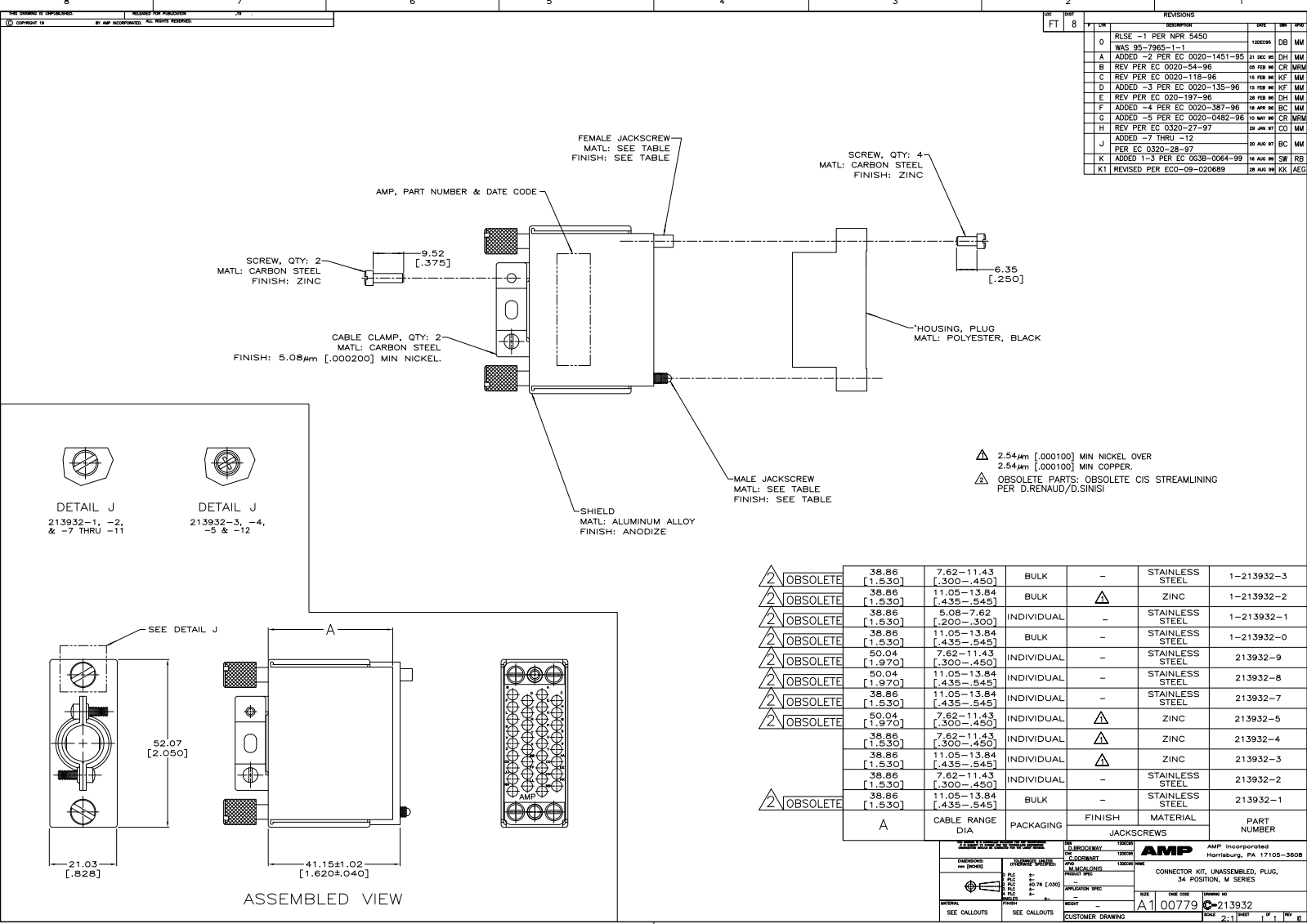
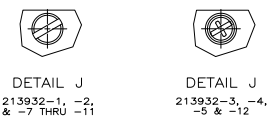


REV	DESCRIPTION	DATE	BY	CHK
0	RLSE -1 PER NPR 5450 WAS 95-7965-1-1	12DEC98	DB	MM
A	ADDED -2 PER EC 0020-1451-95	21 DEC 98	DH	MM
B	REV PER EC 0020-54-96	05 FEB 99	CR	NFM
C	REV PER EC 0020-118-96	19 FEB 99	KF	MM
D	ADDED -3 PER EC 0020-135-96	19 FEB 99	KF	MM
E	REV PER EC 020-197-96	26 FEB 99	DH	MM
F	ADDED -4 PER EC 0020-387-96	18 APR 99	BC	MM
G	ADDED -5 PER EC 0020-0482-96	10 MAY 99	CR	NFM
H	REV PER EC 0320-27-97	28 JAN 97	CO	MM
J	ADDED -7 THRU -12 PER EC 0320-28-97	20 AUG 97	BC	MM
K	ADDED 1-3 PER EC 0038-0064-99	14 AUG 99	SW	RB
K1	REVISED PER ECO-09-020689	28 AUG 99	KK	AEG



△ 2.54µm [.000100] MIN NICKEL OVER  
 2.54µm [.000100] MIN COPPER.  
 △ OBSOLETE PARTS: OBSOLETE CIS STREAMLINING  
 PER D.RENAUD/D.SINISI



△ OBSOLETE	38.86 [1.530]	7.62-11.43 [.300-.450]	BULK	-	STAINLESS STEEL	1-213932-3
△ OBSOLETE	38.86 [1.530]	11.05-13.84 [.435-.545]	BULK	△	ZINC	1-213932-2
△ OBSOLETE	38.86 [1.530]	5.08-7.62 [.200-.300]	INDIVIDUAL	-	STAINLESS STEEL	1-213932-1
△ OBSOLETE	38.86 [1.530]	11.05-13.84 [.435-.545]	BULK	-	STAINLESS STEEL	1-213932-0
△ OBSOLETE	50.04 [1.970]	7.62-11.43 [.300-.450]	INDIVIDUAL	-	STAINLESS STEEL	213932-9
△ OBSOLETE	50.04 [1.970]	11.05-13.84 [.435-.545]	INDIVIDUAL	-	STAINLESS STEEL	213932-8
△ OBSOLETE	38.86 [1.530]	11.05-13.84 [.435-.545]	INDIVIDUAL	-	STAINLESS STEEL	213932-7
△ OBSOLETE	50.04 [1.970]	7.62-11.43 [.300-.450]	INDIVIDUAL	△	ZINC	213932-5
△ OBSOLETE	38.86 [1.530]	7.62-11.43 [.300-.450]	INDIVIDUAL	△	ZINC	213932-4
△ OBSOLETE	38.86 [1.530]	11.05-13.84 [.435-.545]	INDIVIDUAL	△	ZINC	213932-3
△ OBSOLETE	38.86 [1.530]	7.62-11.43 [.300-.450]	INDIVIDUAL	-	STAINLESS STEEL	213932-2
△ OBSOLETE	38.86 [1.530]	11.05-13.84 [.435-.545]	BULK	-	STAINLESS STEEL	213932-1
A	CABLE RANGE DIA	PACKAGING	FINISH	MATERIAL	JACKSCREWS	PART NUMBER

**AMP** AMP Incorporated Harrisburg, PA 17105-3608

CONNECTOR KIT, UNASSEMBLED, PLUG, 34 POSITION, M SERIES

AMP 00779 C-213932

SCALE: 2:1