

4

3

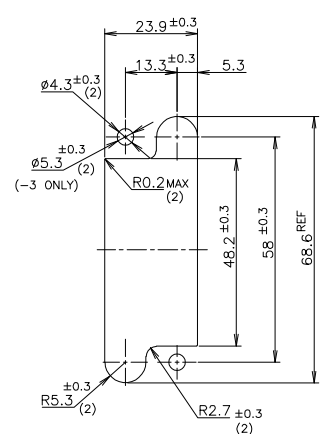
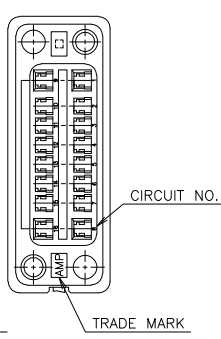
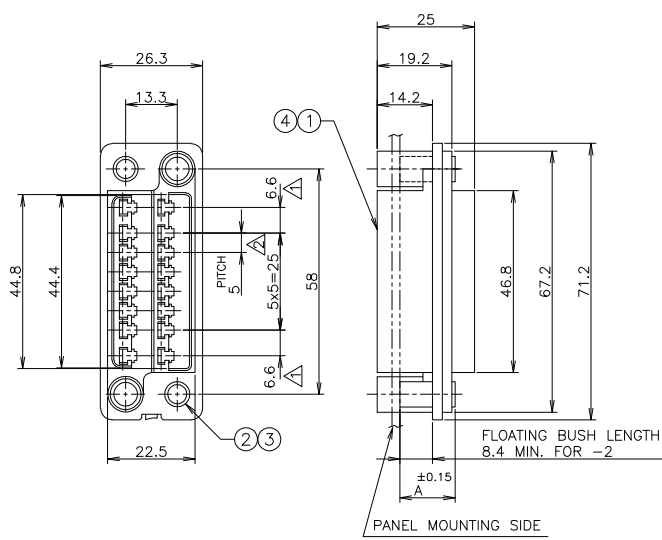
2

1

THIS DRAWING IS UNPUBLISHED. RELEASED FOR PUBLICATION JAN. 1979.
 © COPYRIGHT 1979 BY TYCO ELECTRONICS CORPORATION. ALL RIGHTS RESERVED.

LOC	DIST	REVISIONS				
P	LTR	DESCRIPTION	DATE	DWN	APVD	
A		RELEASED	ECR-05-009552	06SEP05	C.Z S.Y	

-1, -3; AS SHOWN



THK 1.6±0.2
RECOMMENDED PANEL CUTOUT DIM.

- NOTES:
 △ FOR POWER CIRCUITS (4 POS)
 △ FOR SIGNAL CIRCUITS (12 POS)
 3 ACCOMMODATED CONTACTS ARE STRIP P/N 170311, 170312, 170484
 L.P P/N 170313, 170314, 170485
 △ MALE HSG P/N IS 172059
 △ PROD.SPEC 108-5125, APPLICATION SPEC 114-5044

QTY REQD PER ASSY	7.3	7.3	A	PART NO	NAME	REMARKS	ITEM NO
1	+	+		172060-3	DRAWER CONN FEMALE HSG	16 POS (4mm)	④
2	+	+		1-172065-1	FLOATING BUSH ASSY	(4mm)	③
1	+	+		172060-1	DRAWER CONN FEMALE HSG	16 POS (3mm)	②
1	+	+		172060-1	DRAWER CONN FEMALE HSG	16 POS (3mm)	①

THIS DRAWING IS A CONTROLLED DOCUMENT.

DIMENSIONS: mm	TOLERANCES UNLESS OTHERWISE SPECIFIED: 0 PLC ±0.4 1 PLC ±0.4 2 PLC ±0.4 3 PLC ±0.4 4 PLC ±0.4 ANGLES ±	DWN C.ZHU 06SEP05 CHK I.WANG 06SEP05 APVD S.YAO 06SEP05	tyco Electronics Tyco Electronics AMP K.K. Kawasaki, Japan
MATERIAL	FINISH	PRODUCT SPEC APPLICATION SPEC	16POS FEMALE HSG ASSY DRAWER CONNECTOR
		WEIGHT	SIZE A3 CAGE CODE 00779 DRAWING NO C-5172068
		CUSTOMER DRAWING	RESTRICTED TO

SCALE 1:1 SHEET 1 OF 1 REV A