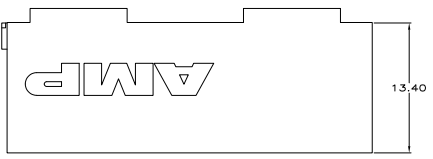
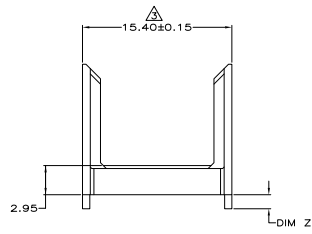
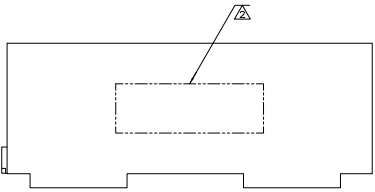
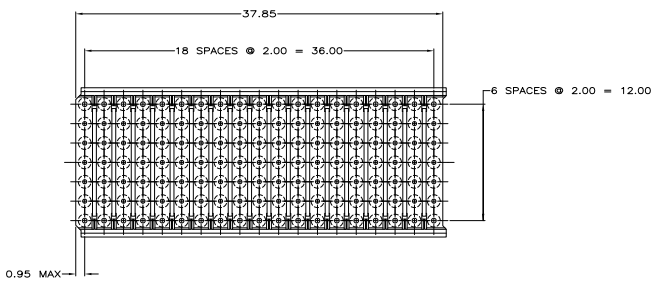


THIS DRAWING IS UNPUBLISHED
 RELEASED FOR PUBLIC USE
 BY AMP INCORPORATED. ALL RIGHTS RESERVED.

REV	DATE	DESCRIPTION	BY	CHK	APP
D1		REVISED PER ECO-10-026111			



- ▲ MATERIAL: GLASS FILLED POLYESTER.
- ▲ PART NUMBER MARKED IN APPROXIMATE AREA SHOWN.
- ▲ TO BE MEASURED AT BASE OF SHROUD.
- ▲ OBSOLETE PARTS: OBSOLETE CIS STREAMLINING PER D.RENAUD/D.SINISI



OBsolete	1.90	646481-7
	1.70	646481-6
	1.50	646481-5
OBsolete	1.30	646481-4
OBsolete	1.10	646481-3
OBsolete	0.90	646481-2
		646481-1
	DIM Z	PART NUMBER

THIS DRAWING IS A CONTROLLED DOCUMENT

DESIGNED BY	T. SHEY	DATE	11-28-81
DRAWN BY	J.P. SKIFFER	DATE	11-28-81
CHECKED BY	J.P. SKIFFER	DATE	11-28-81
APPROVED BY		DATE	

Yugo Electronics
 Tyco Electronics corporation
 Harrisburg, PA 17105-3608

SHROUD, TYPE B,Z-PACK 2mm HM,
 5 ROW, 133 POSITION

SIZE: ONE SIZE DRAWING NO: A100779
 PART NO: 646481
 REV: 5.1

REWORKED TO: D1