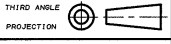


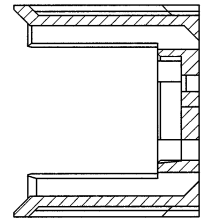
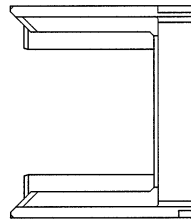
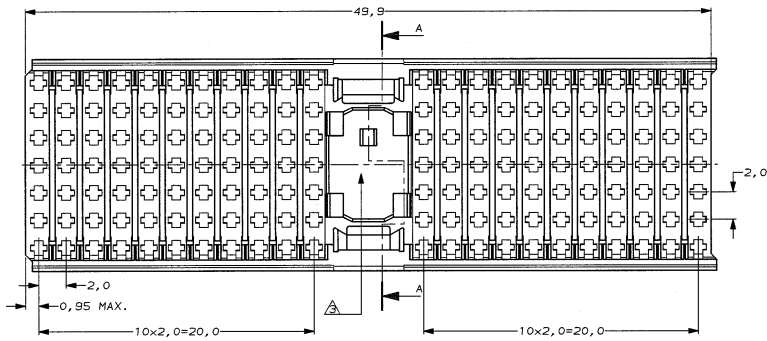
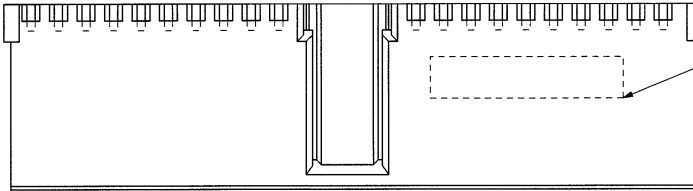
DO NOT SCALE
DIMENSIONS IN mm

METRIC

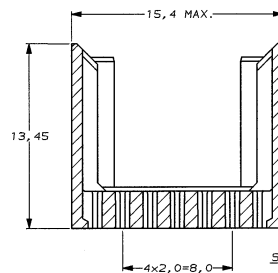
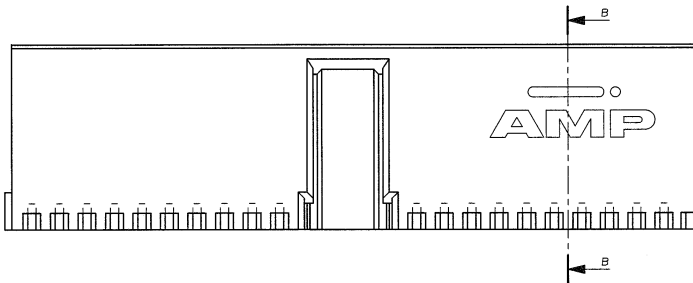


NOTES:

- 1 MATERIAL HOUSING: GLASSFILLED POLYESTER.
- △ HOUSING PRINTED WITH PARTNUMBER AND DATE CODE.
- △ AREA RESERVED FOR KEYING PART (BASIC P.N. 100525).



SECTION A-A



SECTION B-B

106137-2 AS SHOWN

		FINISH	MATERIAL	PARTNUMBER	
-	-	-	-	CUSTOMER DRAWING FOR REFERENCE ONLY WILL NOT BE UPDATED.	
-	-	-	-	© COPYRIGHT 1996 BY AMP-HOLLAND B.V.	
-	-	-	-	ALL INTERNATIONAL RIGHTS RESERVED. AMP PRODUCTS MAY BE COVERED BY U.S. AND FOREIGN AND/OR PATENTS PENDING.	
-	-	-	-	THIS DRAWING IS UNPUBLISHED	
C	EH-0764-96	DT	PVK	21-20-96	
B	EH-0238-93	LvM	DS	2 JUNE 93	
A	EH-0081-93	S.H.	-	04-02-93	
O	H-10164	JvL	TS	30-11-92	
L.T.R. REVISION RECORD		DR.	CHK.	DATE	
DR.	D. THAREN	CHK.	J. THAREN	APP.	S. MOUJ
DATE:	21-JUN-96	DATE:	21-JUN-96	DATE:	21-JUN-96
		DWG. No.	REV. LTR.	SHEET	
		C-106137	C	1 of 1	