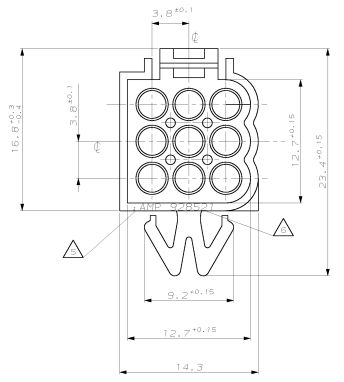
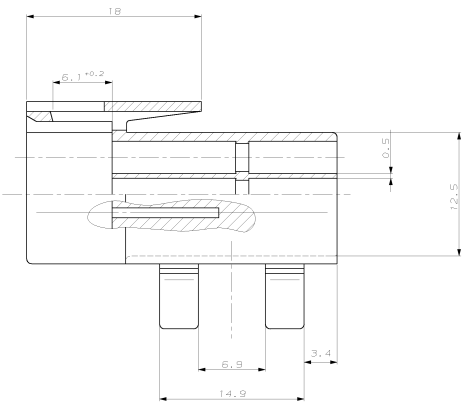
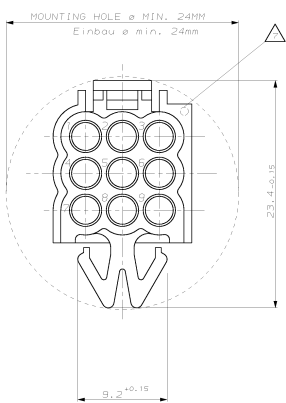
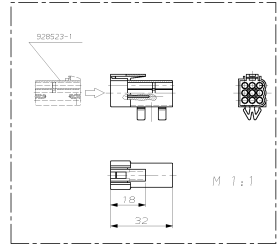
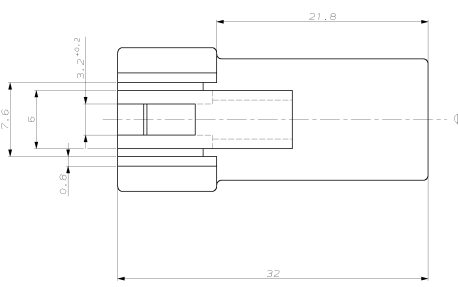
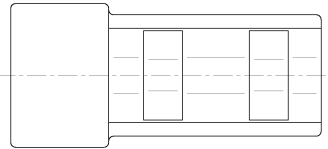


REV. 01	DATE	BY	APP.
01	10.08.2010	W. B.	W. B.

REV. 01	DATE	BY	APP.
01	10.08.2010	W. B.	W. B.



VIEW X  
Ansicht X



- NOTES:**  
Bemerkungen:
- HOUSING WITHOUT CLIP 928522 Gehäuse ohne Blechverrosterung 928522
  - STEEL HOLE  $8^{+0.2} \times 15^{+0.2}$  Blechbohrung  $8^{+0.2} \times 15^{+0.2}$
  - RADII WITHOUT DIMENSIONS 0.5 Unbenannte Radien 0.5
  - ALL SHARP EDGES Alle scharfen Kanten
- AMP LOGO AMP Logo
  - ORDER NUMBER Bestell-Nummer
  - CAVITY MARKING Nestmarkierung

ONLY RECOMMENDED	CONTACTABLE / Kontakttafel
0-927884-1	0-927885-1
0-927884-2	0-927885-2
0-928522-1	0-928522-2

CUSTOMER PART NO.	AMP PART NO.	REV.	DESC.	PACKAGE	FINISH	MARKING	DESCRIPTION	UNIT
	0-928522-1	H	1	PA 66	NATURAL	CJ II PIN HSG., 9POS.		

<p>10 INSTRUCTIONS FOR ORDERING</p> <p>1. ORDER NUMBER</p> <p>2. PART NUMBER</p> <p>3. REV.</p> <p>4. PACKAGE</p> <p>5. FINISH</p> <p>6. MARKING</p> <p>7. DESCRIPTION</p> <p>8. UNIT</p>	<p>928522</p> <p>0-928522-1</p> <p>0-928522-2</p> <p>0-928522-3</p> <p>0-928522-4</p> <p>0-928522-5</p> <p>0-928522-6</p> <p>0-928522-7</p> <p>0-928522-8</p> <p>0-928522-9</p> <p>0-928522-10</p> <p>0-928522-11</p> <p>0-928522-12</p> <p>0-928522-13</p> <p>0-928522-14</p> <p>0-928522-15</p> <p>0-928522-16</p> <p>0-928522-17</p> <p>0-928522-18</p> <p>0-928522-19</p> <p>0-928522-20</p>	<p>AMP</p> <p>AMP Deutschland GmbH</p> <p>B - 63225 Lohr</p> <p>CJ II PIN HSG., 9POS.</p> <p>CJ II Strifgehäuse, 9Pos.</p> <p>118 (see REV. 01)</p> <p>A100778 (0-928522)</p>
---	--	---