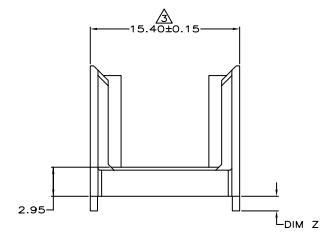
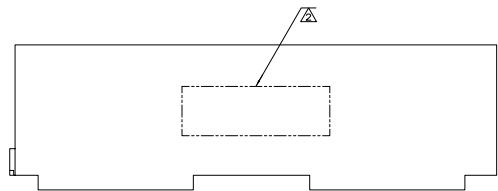
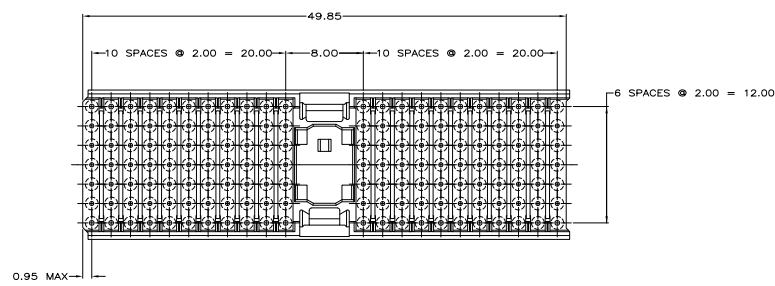
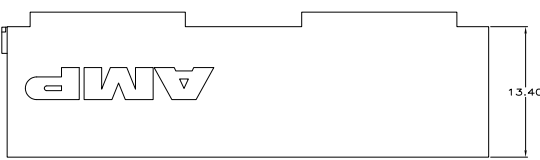


THIS DRAWING IS UNPUBLISHED
 RELEASED FOR PUBLIC USE
 BY AMP INCORPORATED. ALL RIGHTS RESERVED.

REV	DATE	DESCRIPTION	BY	CHK	APP
C1	REV PER EC	001B-0192-01	27 APR 81	BC	RP
C1	REVISED PER ECO	10-000443	15 APR 81	KK	AEG
D	ECR-10-019004		15 SEP 10	DP	MGW

- ⚠ MATERIAL: GLASS FILLED POLYESTER.
- ⚠ PART NUMBER MARKED IN APPROXIMATE AREA SHOWN.
- ⚠ TO BE MEASURED AT BASE OF SHROUD.
- ⚠ OBSOLETE PARTS: OBSOLETE CIS STREAMLINING PER D.RENAUD/D.SINISI



DIM Z	PART NUMBER
1.90	646478-7
1.70	646478-6
1.50	646478-5
1.30	646478-4
1.10	646478-3
0.90	646478-2
	646478-1

THIS DRAWING IS A CONTROLLED DOCUMENT

T. SHEY 11-18-81
 J.P. SKIFFER 11-23-81
 J.P. SKIFFER 11-23-81
 J.P. SKIFFER 11-23-81

AMP AMP Incorporated
 Harrisburg, PA 17105-3608

SHROUD, TYPE A, Z-PACK 2mm HM,
 S ROW, 154 POSITION, WITH GUIDE

SIZE: 5.1 x 1.1 x 1.1
 DRAWING NO: A100779
 PART NO: 646478

CUSTOMER DRAWING