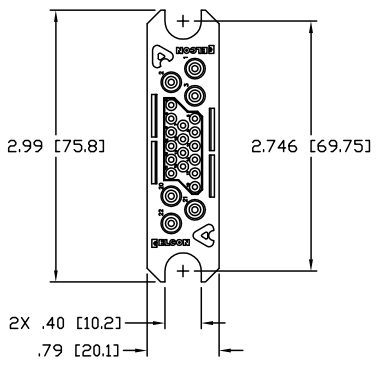
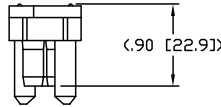


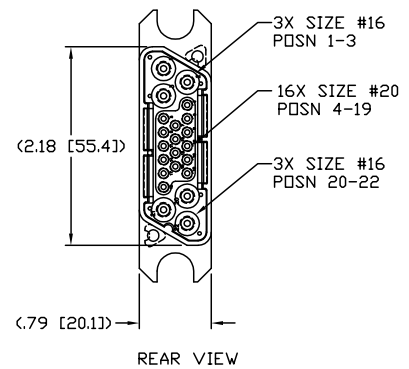
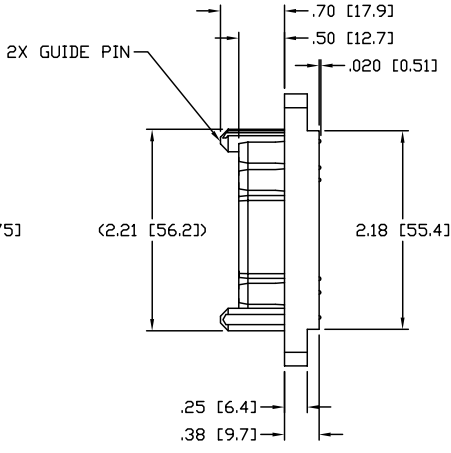
4	3	2	1																																														
<table border="1" style="width:100%; border-collapse: collapse;"> <tr> <th colspan="4" style="text-align: center;">REVISIONS</th> </tr> <tr> <th style="width:10%;">EC</th> <th style="width:10%;">REV</th> <th style="width:70%;">DESCRIPTION</th> <th style="width:10%;">DATE</th> </tr> <tr> <td style="text-align: center;">CPR</td> <td style="text-align: center;">A</td> <td>NEW RELEASE</td> <td style="text-align: center;">03/08/06</td> </tr> </table>				REVISIONS				EC	REV	DESCRIPTION	DATE	CPR	A	NEW RELEASE	03/08/06																																		
REVISIONS																																																	
EC	REV	DESCRIPTION	DATE																																														
CPR	A	NEW RELEASE	03/08/06																																														
<p style="font-size: 8px; margin: 0;">This drawing involves proprietary design rights of Tyco Electronics Corporation, and all design, manufacture, reproduction, use and sale rights regarding the same are expressly reserved. It is submitted for a specific purpose and the recipient by accepting this drawing, assumes custody and control and agrees to take reasonable precautions: (a) that this drawing will not be copied and reproduced, in whole or in part, or its contents, revealed in any manner, or in any form, except to meet the purpose for which it was delivered and (b) that any special features peculiar to this design will not be incorporated in other projects without the expressed written permission of Tyco Electronics Corporation.</p>																																																	
<table border="1" style="width:100%; border-collapse: collapse;"> <tr> <th colspan="4" style="text-align: center;">TYPICAL SPECIFICATION TABLE</th> </tr> <tr> <th style="width:15%;">POSITION</th> <th style="width:15%;">CONTACT SIZE</th> <th style="width:15%;">RATING</th> <th style="width:15%;">VOLTAGE RATING</th> </tr> <tr> <td style="text-align: center;">1 - 3</td> <td style="text-align: center;">#16</td> <td style="text-align: center;">15 AMPERES</td> <td style="text-align: center;">250 VOLTS</td> </tr> <tr> <td style="text-align: center;">4 - 19</td> <td style="text-align: center;">#20</td> <td style="text-align: center;">5 AMPERES</td> <td style="text-align: center;">250 VOLTS</td> </tr> <tr> <td style="text-align: center;">20 - 22</td> <td style="text-align: center;">#16</td> <td style="text-align: center;">15 AMPERES</td> <td style="text-align: center;">250 VOLTS</td> </tr> </table>				TYPICAL SPECIFICATION TABLE				POSITION	CONTACT SIZE	RATING	VOLTAGE RATING	1 - 3	#16	15 AMPERES	250 VOLTS	4 - 19	#20	5 AMPERES	250 VOLTS	20 - 22	#16	15 AMPERES	250 VOLTS																										
TYPICAL SPECIFICATION TABLE																																																	
POSITION	CONTACT SIZE	RATING	VOLTAGE RATING																																														
1 - 3	#16	15 AMPERES	250 VOLTS																																														
4 - 19	#20	5 AMPERES	250 VOLTS																																														
20 - 22	#16	15 AMPERES	250 VOLTS																																														
<p>6. ITEMS PROVIDED TO THIS SPECIFICATION TO BE PERMANENTLY IDENTIFIED PER THE FOLLOWING IDENTIFIER:</p> <p style="text-align: center;">YEAR <u> </u> WEEK <u> </u></p> <p>TYCO PART NUMBER DATE CODE (e.g. 0625)</p> <p style="text-align: center;"> ----- ----- </p> <p style="text-align: center;"> XXXXXXXX-X XXXX </p>																																																	
<p>5. ALL DIMENSIONS SHOWN ACROSS A CENTERLINE (⊥) SHALL BE CENTRALIZED WITHIN THE TOLERANCE INDICATED FOR THAT DIMENSION.</p> <p>4. A REFERENCE DIMENSION (.XXX) IS WITHOUT TOLERANCE AND USED FOR INFORMATION PURPOSE ONLY.</p> <p>3. RECOMMENDED MOUNTING HARDWARE: TO BE ORDERED SEPARATELY.</p> <ul style="list-style-type: none"> - FOR PANEL MOUNTING, USE <ul style="list-style-type: none"> 1650402-1: SHOULDER SCREW, #8-32 1650106-1: SHOULDER SCREW, #6-32 1650589-1: SHOULDER SCREW, M4X0.7 - FOR PCB MOUNTING, USE COMMERCIALY AVAILABLE SCREW AND WASHER (IF REQUIRED). <p>2. MATERIALS:</p> <p style="padding-left: 20px;">HOUSING: THERMOPLASTIC, GLASS REINFORCED, COLOR-BLACK UL94V-0 FLAMMABILITY RATED.</p> <p style="padding-left: 20px;">RETENTION CLIP: COPPER ALLOY OR STAINLESS STEEL</p> <p>1. PART NUMBER CHANGES AND OR DESIGN CHANGES AFFECTING ITEM INTERCHANGEABILITY REQUIRE PRIOR ELCON APPROVAL AND AUTHORIZATION BY REVISION TO THIS DRAWING.</p> <p>NOTES: UNLESS OTHERWISE SPECIFIED</p>																																																	
<table border="1" style="width:100%; border-collapse: collapse;"> <tr> <td style="width:15%; text-align: center;">1648116-1</td> <td style="width:85%; text-align: center;">AS SHOWN</td> </tr> <tr> <td style="text-align: center;">PART NUMBER</td> <td style="text-align: center;">DESCRIPTION</td> </tr> </table>				1648116-1	AS SHOWN	PART NUMBER	DESCRIPTION																																										
1648116-1	AS SHOWN																																																
PART NUMBER	DESCRIPTION																																																
<table border="1" style="width:100%; border-collapse: collapse;"> <tr> <td style="width:15%; text-align: center;">INCH MM</td> <td style="width:15%; text-align: center;">OR INCH (MM)</td> <td style="width:15%;">DRAWN</td> <td style="width:15%;">DATE</td> <td style="width:40%;"></td> </tr> <tr> <td style="text-align: center;">⊕</td> <td style="text-align: center;">⊕</td> <td>HA NGUYEN</td> <td>03/08/06</td> <td rowspan="2" style="text-align: center; vertical-align: middle;"> Tyco Electronics Corporation Menlo Park, Ca 94025 </td> </tr> <tr> <td colspan="2" style="text-align: center;">THIRD ANGLE PROJECTION</td> <td>CHECKED</td> <td></td> </tr> <tr> <td colspan="2" style="text-align: center;">UNLESS OTHERWISE SPECIFIED DIMENSIONS ARE IN INCHES (METRIC)</td> <td>APPROVED</td> <td></td> <td rowspan="4" style="text-align: center; vertical-align: middle;"> TITLE CONNECTOR, SOCKET HOUSING #16, #20, #16 CONFIGURATION MINI DRAWER </td> </tr> <tr> <td colspan="2" style="text-align: center;">TOLERANCES</td> <td>APPROVED</td> <td></td> </tr> <tr> <td style="text-align: center;">ANGLES ± .5°</td> <td></td> <td>STEVE FLICKINGER</td> <td>03/08/06</td> </tr> <tr> <td style="text-align: center;">DECIMALS</td> <td></td> <td>DCA APPROVED</td> <td></td> </tr> <tr> <td style="text-align: center;">.XXX ± .010 (.25)</td> <td></td> <td>HA NGUYEN</td> <td>03/08/06</td> <td style="text-align: center;"> SIZE DWG NUMBER B </td> </tr> <tr> <td style="text-align: center;">.XX ± .02 (.3)</td> <td></td> <td>ACAD FILE NUMBER</td> <td>C1648116A.DWG</td> <td style="text-align: center;"> REV. A </td> </tr> <tr> <td colspan="4"></td> <td style="text-align: center;"> DWG SCALE 1=1 SH 1 OF 3 </td> </tr> </table>				INCH MM	OR INCH (MM)	DRAWN	DATE		⊕	⊕	HA NGUYEN	03/08/06	Tyco Electronics Corporation Menlo Park, Ca 94025	THIRD ANGLE PROJECTION		CHECKED		UNLESS OTHERWISE SPECIFIED DIMENSIONS ARE IN INCHES (METRIC)		APPROVED		TITLE CONNECTOR, SOCKET HOUSING #16, #20, #16 CONFIGURATION MINI DRAWER	TOLERANCES		APPROVED		ANGLES ± .5°		STEVE FLICKINGER	03/08/06	DECIMALS		DCA APPROVED		.XXX ± .010 (.25)		HA NGUYEN	03/08/06	SIZE DWG NUMBER B	.XX ± .02 (.3)		ACAD FILE NUMBER	C1648116A.DWG	REV. A					DWG SCALE 1=1 SH 1 OF 3
INCH MM	OR INCH (MM)	DRAWN	DATE																																														
⊕	⊕	HA NGUYEN	03/08/06	Tyco Electronics Corporation Menlo Park, Ca 94025																																													
THIRD ANGLE PROJECTION		CHECKED																																															
UNLESS OTHERWISE SPECIFIED DIMENSIONS ARE IN INCHES (METRIC)		APPROVED		TITLE CONNECTOR, SOCKET HOUSING #16, #20, #16 CONFIGURATION MINI DRAWER																																													
TOLERANCES		APPROVED																																															
ANGLES ± .5°		STEVE FLICKINGER	03/08/06																																														
DECIMALS		DCA APPROVED																																															
.XXX ± .010 (.25)		HA NGUYEN	03/08/06	SIZE DWG NUMBER B																																													
.XX ± .02 (.3)		ACAD FILE NUMBER	C1648116A.DWG	REV. A																																													
				DWG SCALE 1=1 SH 1 OF 3																																													
4	3	2	1																																														

This drawing involves proprietary design rights of Tyco Electronics Corporation, and all design, manufacture, reproduction, use and sale rights regarding the same are expressly reserved. It is submitted for a specific purpose and the recipient by accepting this drawing, assumes custody and control and agrees to take reasonable precautions: (a) that this drawing will not be copied and reproduced, in whole or in part, or its contents, revealed in any manner, or in any form, except in most (b) purpose for which it was delivered and (c) that any special features peculiar to this design will not be incorporated in other projects without the expressed written permission of Tyco Electronics Corporation.

REVISIONS			
EC	REV	DESCRIPTION	DATE
		SEE SHEET 1	



FRONT VIEW



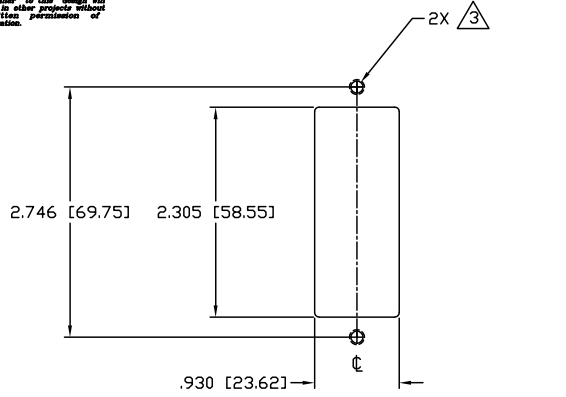
REAR VIEW

INCH OR INCH (MM) THIRD ANGLE PROJECTION UNLESS OTHERWISE SPECIFIED DIMENSIONS ARE IN INCHES (METRIC) TOLERANCES ANGLES ± .5° DECIMALS .XXX ± .010 (.25) .XX ± .02 (.3)	DRAWN HA NGUYEN	DATE 03/08/06	Tyco Electronics Corporation Menlo Park, Ca 94025
	CHECKED		TITLE CONNECTOR, SOCKET HOUSING #16, #20, #16 CONFIGURATION MINI DRAWER
	APPROVED STEVE FLICKINGER	03/08/06	SIZE DWG NUMBER B C-1648116
	APPROVED DCA NGUYEN	03/08/06	REV. A
	ACAD FILE NUMBER C1648116A.DWG		DWG SCALE 1=1 SH 2 OF 3

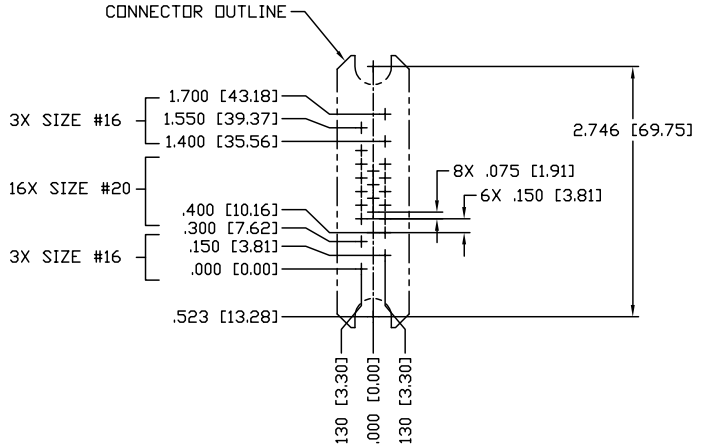
4 3 2 1

This drawing involves proprietary design rights of Tyco Electronics Corporation, and all design, manufacture, reproduction, use and sale rights regarding the same are expressly reserved. It is submitted for a specific purpose and the recipient by accepting this drawing, assumes custody and control and agrees to take reasonable precautions: (a) that this drawing will not be copied and reproduced in whole or in part, or its contents, revealed in any manner, or in any form, except in most (b) purpose for which it was delivered and (c) that any special features peculiar to this design will not be incorporated in other projects without the expressed written permission of Tyco Electronics Corporation.

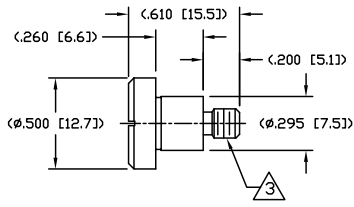
REVISIONS			
EC	REV	DESCRIPTION	DATE
		SEE SHEET 1	



RECOMMENDED PANEL CUTOUT
AS VIEWED FROM CONNECTOR MOUNTING SIDE
(FRONT VIEW)



CONNECTOR OUTLINE
CONTACT LAYOUT
AS VIEWED FROM CONNECTOR MOUNTING SIDE
(FRONT VIEW)



SHOULDER SCREW
SCALE 2:1
SHOWN FOR REFERENCE ONLY

<small>INCH OR INCH (MM)</small> <small>THIRD ANGLE PROJECTION</small>	<small>DRAWN</small> HA NGUYEN <small>CHECKED</small> 	<small>DATE</small> 03/08/06	Tyco Electronics Corporation Menlo Park, Ca 94025
<small>UNLESS OTHERWISE SPECIFIED DIMENSIONS ARE IN INCHES (METRIC)</small>	<small>APPROVED</small> 		<small>TITLE</small> USER INFORMATION RECOMMENDED PANEL CUTOUT AND CONTACT LAYOUT
<small>TOLERANCES</small> ANGLES $\pm .5^\circ$ <small>DECIMALS</small> .XXX $\pm .010 (.25)$.XX $\pm .02 (.3)$	<small>APPROVED</small> STEVE FLICKINGER <small>DCA APPROVED</small> HA NGUYEN <small>ACAD FILE NUMBER</small> C1648116A.DWG	<small>DATE</small> 03/08/06 <small>DATE</small> 03/08/06	<small>SIZE</small> B <small>DWG NUMBER</small> C- 1648116 <small>REV.</small> A
<small>DWG SCALE</small> 1=1			<small>SH</small> 3 OF 3

4 3 2 1