

4

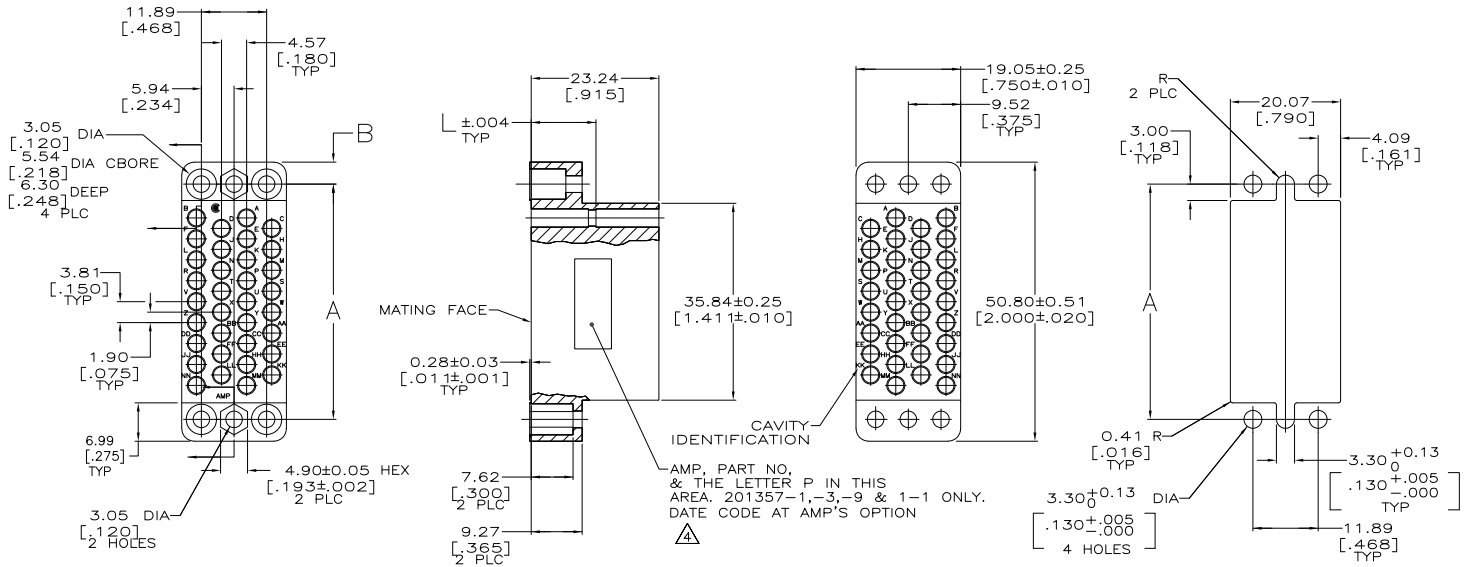
3

2

1

THIS DRAWING IS UNPUBLISHED. RELEASED FOR PUBLICATION. ALL RIGHTS RESERVED.

LOC	DIST	REVISIONS		DATE	BY	APPD
FT	0	F	LR			
		T2		REVISED PER ECO-11-005027	11MAR11	RK HMR



RECOMMENDED PANEL CUTOUT

△ PHENOLIC, BLACK.

△ DIALYL PHTHALATE, BLUE.

3. MATES WITH BLOCK 200838 & ACCOMMODATES TYPE II OR TYPE III #16 PIN OR SOCKET CONTACTS. EXCEPT FOR 201357-1, WHICH ACCEPTS ONLY PIN CONTACTS.

△ FOR 201357-9, KS 21303 L9 MARKED IN ADDITION TO THE AMP PART NO.

14.07	[.554]	3.99	[.157]	42.82	[1.686]	△	1-201357-1
14.07	[.554]	3.99	[.157]	42.82	[1.686]	△	1-201357-0
14.07	[.554]	3.86	[.152]	43.08	[1.696]	△	201357-9
14.07	[.554]	3.86	[.152]	43.08	[1.696]	△	201357-3
11.79	[.464]	3.99	[.157]	42.82	[1.686]	△	201357-1

DIMENSIONS		TOLERANCES UNLESS OTHERWISE SPECIFIED		MATERIAL		PART NUMBER	
mm	[INCHES]	mm	[INCHES]	SEE TABLE	SEE TABLE		
0 PLC	± .004	0	± .004				
1 PLC	± .004	1	± .004				
2 PLC	± .004	2	± .004				
3 PLC	± .004	3	± .004				
4 PLC	± .004	4	± .004				