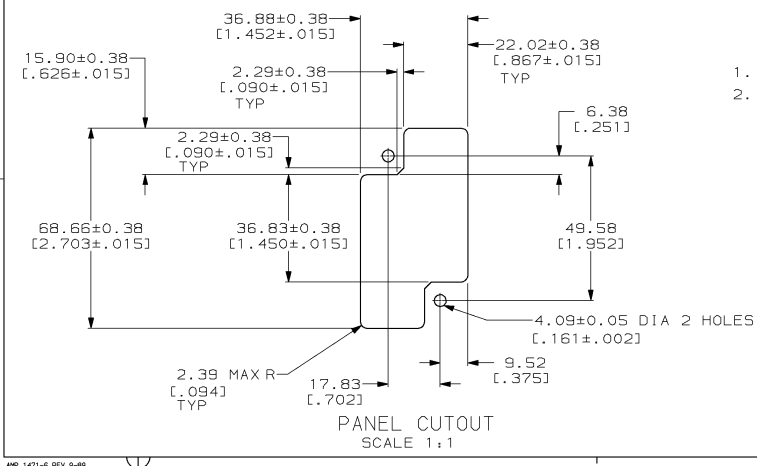
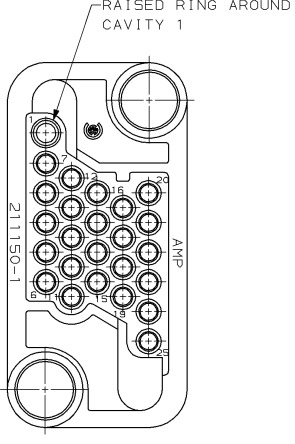
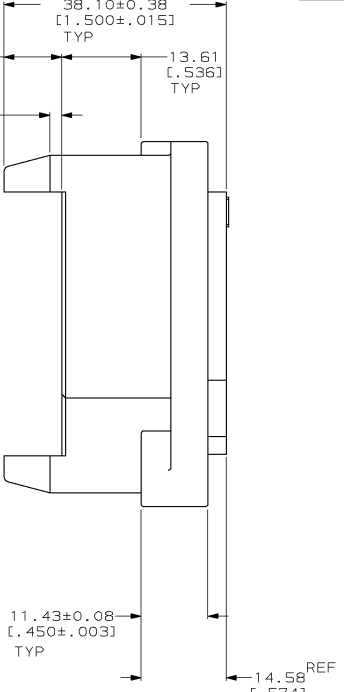
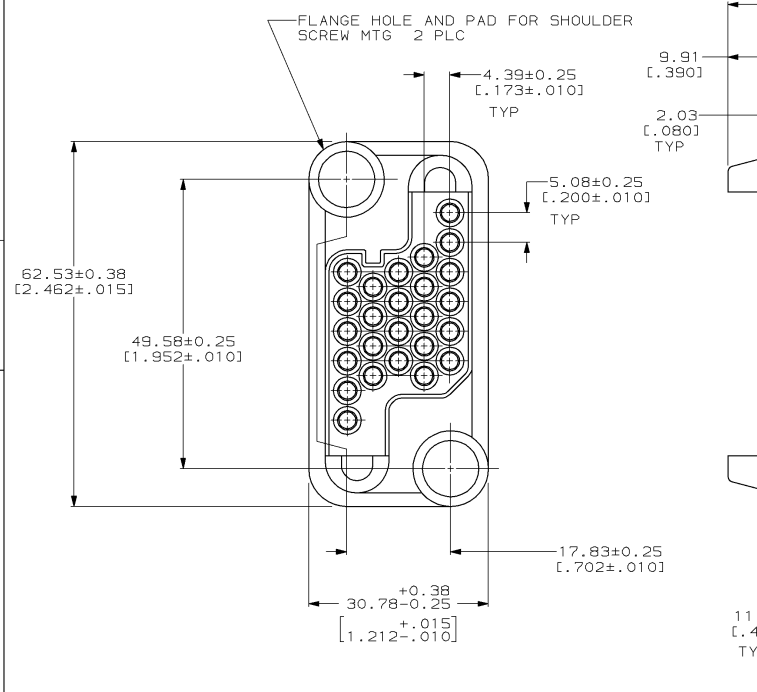


4 3 2 1
 DRAWING MADE IN THIRD ANGLE PROJECTION
 THIS DRAWING IS UNPUBLISHED. RELEASED FOR PUBLICATION
 © COPYRIGHT 19 BY AMP INCORPORATED. ALL INTERNATIONAL RIGHTS RESERVED.

LOC	DIST	P	F	ZONE	LTR	REVISIONS	DATE	APPD
FT	13					F REDRAWN & REV PER ECN B05737	01/14/92	-
						G REV PER EC 0320-301-97	08 SEP 97	MM



1. THIS CONNECTOR MATES WITH PIN HOUSING 211149.
2. FOR MOUNTING SCREW INFORMATION SEE DRAWING 208211.

211150-1
PART NO
PART NO

DO NOT SCALE PRINT. UNLESS SPECIFIED DIMENSIONS IN mm [INCHES] TOLERANCES ON + 2 PLC DEC ± 0.13 [.005] 3 PLC DEC ± ANGLES ± -		DR 01/14/92 C. OBERMAN	AMP Incorporated Harrisburg, PA 17105-3608
MATERIAL POLYESTER, UL 94V-0 RATED, BLACK		CHK 1-22-92 R. STONE	
FINISH -		APPD 1-22-92 A. TRAVIS	NAME SOCKET HOUSING, 25 POSN METRIMATE
APPLICATION SPEC -		APPD 1-23-92 C. RHDDE	PRODUCT SPEC -
WEIGHT -		SIZE C	CAGE CODE 00779
		SCALE 2:1	DRAWING NO 211150
			SHEET 1 OF 1

AMP 1471-6 REV 9-89
 10-SEP-97 08:29:15 asp11676nme/srv0264/dsk04/dept4023/amp11676/edmod

CUSTOMER DRAWING