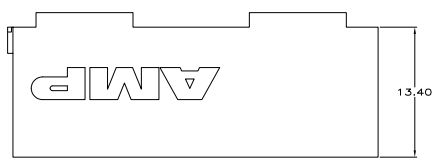
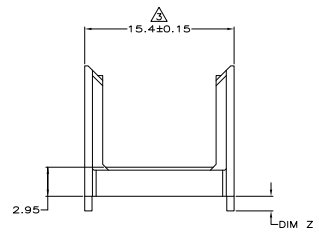
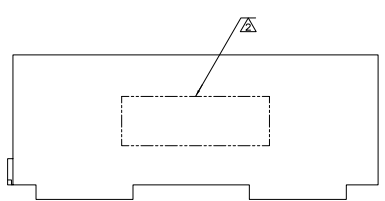
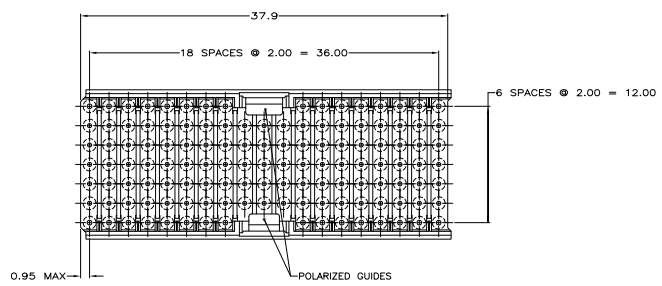


THIS DRAWING IS UNPUBLISHED. RELEASE FOR PUBLIC USE BY AIP INCORPORATED. ALL RIGHTS RESERVED.

REV	DATE	DESCRIPTION	BY	CHK	APP
D	26APR2010	REVISED PER ECR-10-008928	SAV	SY	
E	15SEP10	ECR-10-019054	DP	MCW	



- △ MATERIAL: GLASS FILLED POLYESTER.
- △ PART NUMBER MARKED IN APPROXIMATE AREA SHOWN.
- △ TO BE MEASURED AT BASE OF SHROUD.
- △ OBSOLETE PARTS: OBSOLETE CIS STREAMLINING PER D.RENAUD/D.SINISI



DIM Z	PART NUMBER
1.90	646483-7
1.70	646483-6
1.50	646483-5
1.30	646483-4
1.10	646483-3
0.90	646483-2
	646483-1

THIS DRAWING IS A CONTROLLED DOCUMENT. T. SHEY 4438
 D. SKIFFER 1138-81
 T. SHEY 1138-81
 D. SKIFFER 1138-81

Yoco Electronics Corporation
 Harrisburg, PA 17105-3608

SHROUD, A-B, Z - PACK 2mm HM, 5 ROW,
 127 POSITION, WITH GUIDE

SIZE: A100779 (DRAWING NO. 646483)
 SHEET 5 OF 1

CUSTOMER DRAWING