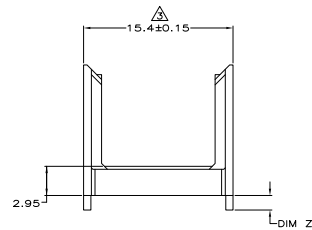
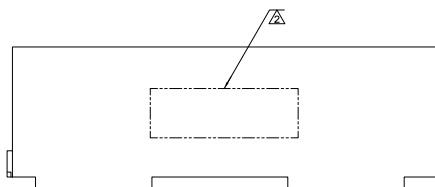
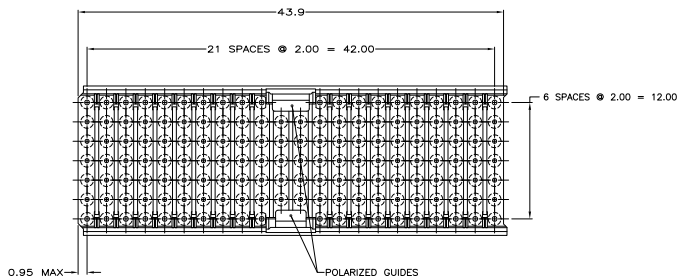
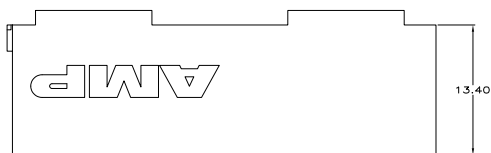


THIS DRAWING IS UNPUBLISHED
 UNLESS FOR PRODUCTION
 BY AMP INCORPORATED. ALL RIGHTS RESERVED.

REV	DATE	DESCRIPTION	BY	CHK	APP
C	REV PER ECO 0U1B-0192-01		27.AM	EN	BC RP
C1	REVISED PER ECO-10-000443		15.MN10	KK	AEG
D	ECR-10-019054		15SEP10	DP	MON

- △ MATERIAL: GLASS FILLED POLYESTER.
- △ PART NUMBER MARKED IN APPROXIMATE AREA SHOWN.
- △ TO BE MEASURED AT BASE OF SHROUD.
- △ OBSOLETE PARTS: OBSOLETE CIS STREAMLINING PER D.RENAUD/D.SINIS



DIM Z	PART NUMBER
1.90	646484-7
1.70	646484-6
1.50	646484-5
1.30	646484-4
1.10	646484-3
0.90	646484-2
	646484-1

THIS DRAWING IS A CONTROLLED DOCUMENT

DESIGNED BY: J. SHEY (448)
 CHECKED BY: J. SHEY (11-28-91)
 DRAWN BY: G. SKEPPER (11-28-91)
 DATE: 11-28-91

APPROVED BY: G. SKEPPER (11-28-91)
 DATE: 11-28-91

DESCRIPTION: SHROUD, A-B, Z-PACK 2mm HM.5 ROW, 150 POSITION, WITH GUIDE

SIZE: A100779
 PART NUMBER: 646484

CUSTOMER DRAWING

AMP Incorporated
 Harrisburg, PA 17105-3608

AMP 480 REV 11/20/91
 Document: 0011317214 (2) (HW) (2) (HW) (1) (3) (3)