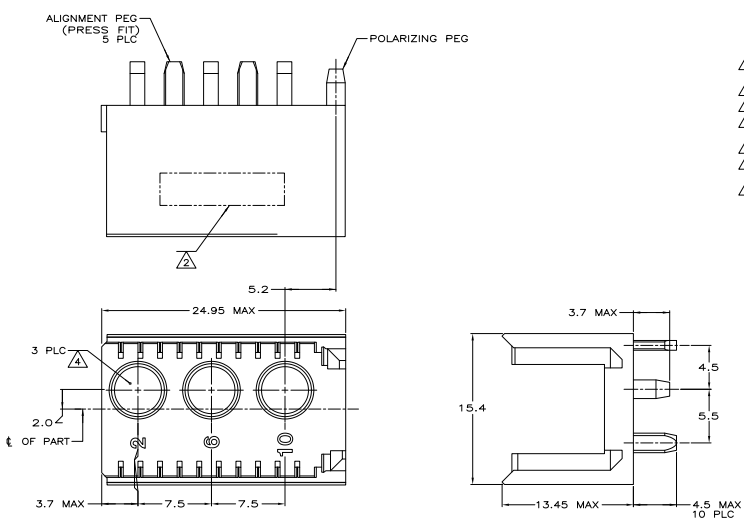
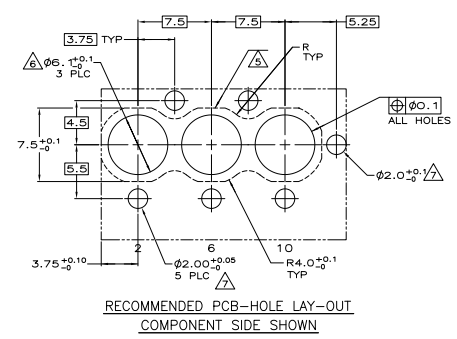


REVISIONS			
REV	DESCRIPTION	DATE	BY
0	DRAWN	-	-
A	ECR-10-019054	10SEP10	DP/NOV



- △ MATERIAL: HOUSING: GLASS-FILLED POLYESTER.
- △ CONNECTOR MARKED WITH PART NUMBER, (OPPOSITE SIDE).
- △ AREA RESERVED FOR KEYING PART (BASIC P/N 100525).
- △ CONTACT CAVITIES SUITABLE FOR Ø4.8 HIGH CURRENT, HIGH FREQUENCY (CABLE OR BOARD MOUNT) OR FIBRE OPTIC CONTACTS AS PER DIN 41626 (ALSO SEE NOTE 10 AND 11).
- △ PATTERN FOR FIBRE OPTIC CONTACTS.
- △ NON PLATED THROUGH HOLES FOR CABLE MOUNT APPLICATIONS. REFERENCE APPLICABLE BOARD MOUNT POWER OR COAX CONTACT DRAWING FOR PCB HOLE LAYOUT.
- △ NON PLATED THROUGH HOLES.



RECOMMENDED PCB-HOLE LAY-OUT  
COMPONENT SIDE SHOWN

THIS DRAWING IS A CONTROLLED DOCUMENT.		REV. NUMBER: 2/27/01	PART NUMBER: 646703-1	
DATE: 2/27/01	DESIGNER: J. PATTERSON	DATE: 2/27/01	AMP Incorporated, Harrisburg, PA 17105-3608	
DATE: 2/27/01	DESIGNER: J. PATTERSON	DATE: 2/27/01	PART NUMBER: 646703	
DATE: 2/27/01	DESIGNER: J. PATTERSON	DATE: 2/27/01	DESCRIPTION: MALE HOUSING, Z-PACK 2mm HM, CABLE OR BOARD MOUNT CONTACTS, TYPE N	
DATE: 2/27/01	DESIGNER: J. PATTERSON	DATE: 2/27/01	SIZE: 100779	646703
DATE: 2/27/01	DESIGNER: J. PATTERSON	DATE: 2/27/01	CUSTOMER DRAWING	SCALE: 5:1