

4

3

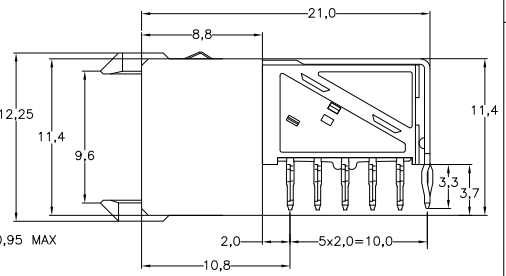
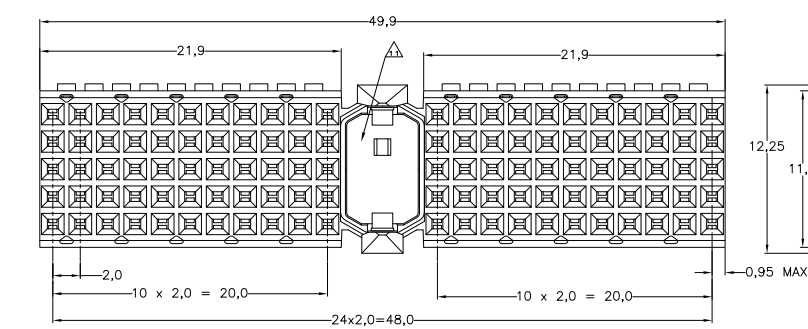
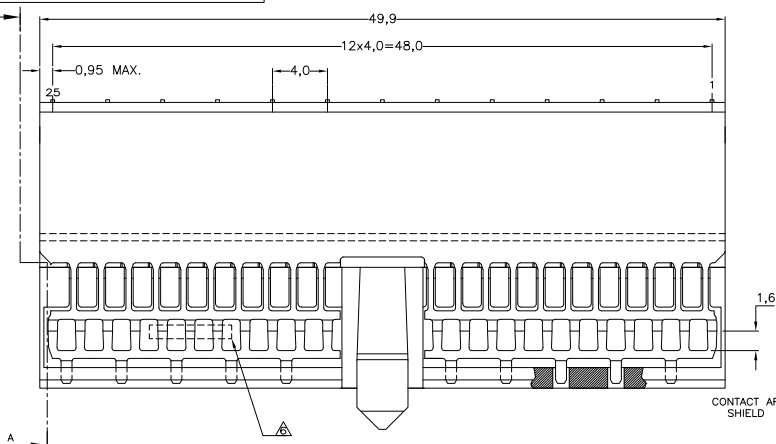
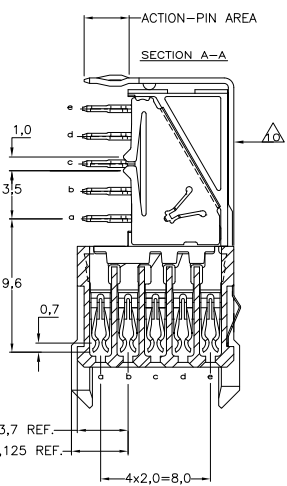
2

1

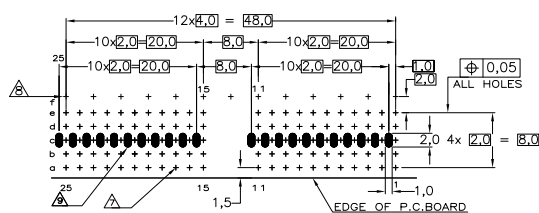
THIS DRAWING IS UNPUBLISHED. RELEASED FOR PUBLICATION. BY TYCO ELECTRONICS CORPORATION. ALL RIGHTS RESERVED.

LOC	DIST	REVISIONS				
H	-	F LWR	DESCRIPTION	DATE	OWN	APD
		G2	ECR-07-030919	21DEC2007	JvH	BM
		H	ECR-10-018652	10SEP10	SW	MQW

- NOTES:
- ▲ MATERIAL CONTACTS: PHOSPHORBRONZE
MATERIAL SHIELDS : PHOSPHORBRONZE
MATERIAL HOUSING: GLASSFILLED POLYESTER (GRAY)
 - ▲ GENERAL CONTACT PLATING SPECIFICATION: UNDERPLATING (ENTIRE CONTACT): 1,27µm NICKEL MIN. AND ACTION PIN: 0,5µm TIN-LEAD MIN. FOR PLATING OF MATING SURFACES SEE APPLICABLE SPECIFICATION REFERENCE FOR EACH DASH NUMBER.
 - ▲ CONFORMS TO ALL TESTING ACCORDING IEC 61076-4-101 PERFORMANCE LEVEL 2.
 - ▲ CONFORMS TO ALL TESTING ACCORDING IEC 61076-4-101 PERFORMANCE LEVEL 1.
 - ▲ PLATING SHIELDS :
GROUND RETURN SHIELD:
CONTACT AREA: 0,76µm Au MIN.
ACTION PIN : 0,5µm SnPb MIN.
REMAINDER : Ni 5µm SnPb MIN.
REDUCED CROSS-TALK SHIELD: GOLD FLASH OVER 1,27 µm NICKEL MIN.
 - ▲ ASS: PRINTED WITH P/N AND DATECODE
THE MARKING CAN APPEAR ON THE FRONT SIDE OR ON THE BACK SIDE.
 - ▲ HOLE PATTERN FOR FEMALE CONNECTOR TYPE A,
 - ▲ ROW "1" 13 PLATED THROUGH HOLES FOR UPPERSHIELD
PLATED SPOT ONLY ON COMPONENT SIDE, FORMING ONE CONTACT WITH PLATED THROUGH HOLES OF ROW C
 - ▲ SHIELD MOUNTED ON CONNECTOR WITH DOUBLE SIDED ADHESIVE TAPE OR ADHESIVE
 - ▲ AREA RESERVED FOR KEYPART (BASIC P.N. 100526)
 - 12 BASIC P.N. LOWERSHIELD:338108



RECOMMENDED P.C.B. HOLE LAY-OUT SCALE 2,5:1 COMPONENT SIDE AS SHOWN



P.C.B. HOLE DIM. ACTION PIN FOR DETAILS SEE APPLICATION SPECIFICATION

THIS DRAWING IS A CONTROLLED DOCUMENT.

DRW: R.V. HEUVEN	25FE988	TYCO Electronics Corporation	
CHK: W. V.D. HEUVEN	25FE988	s-Hertogenbosch, Netherlands.	
APPD: F.V. KONINGSBRUGGE	23NOV99		
PRODUCT SPEC: 108-19082		Z-PACK 2MM HM	
APPLICATION SPEC: 14-19029		TYPE A PRE-SHIELDED RECEPTACLE WITH RED.CROSS-TALK SHIELDS	
MATERIAL: -	FINISH: -	SIZE: A2	00779 ©=352344
CUSTOMER DRAWING		SCALE: NTS	SHEET: 1 of 1

AMP 1471-9 REV 31MM2000

352344

A