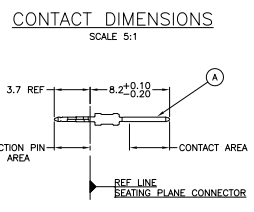
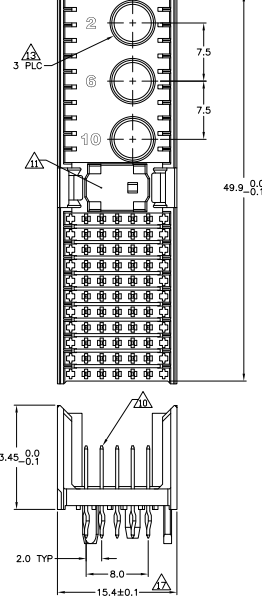
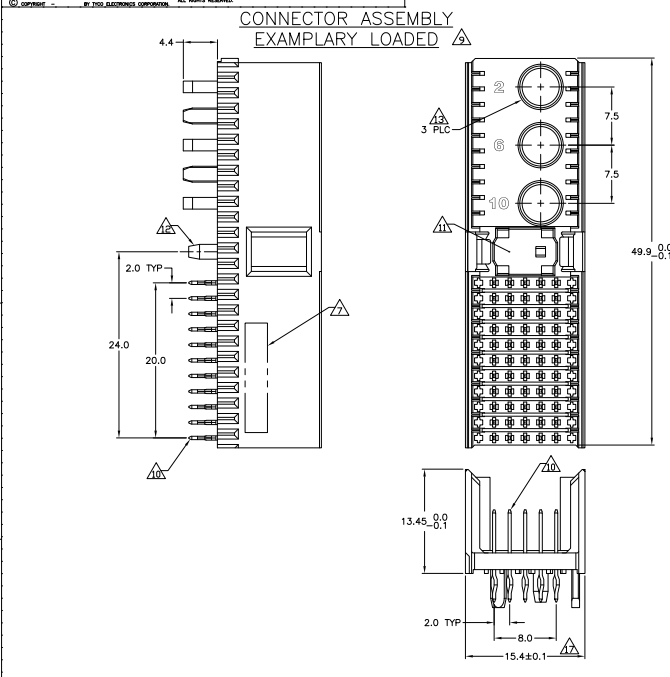
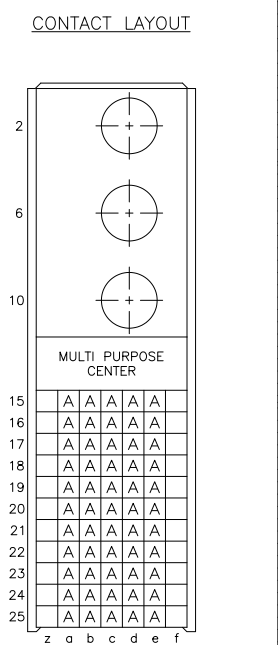


THIS DRAWING IS UNCLASSIFIED  
 RELEASED FOR PUBLICATION  
 © COPYRIGHT BY TYS ELECTRONICS CORPORATION. ALL RIGHTS RESERVED.



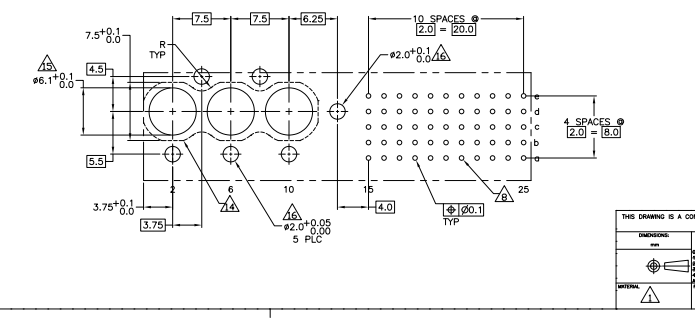
REV	DATE	DESCRIPTION	BY	CHK	APP
F2		REV PER EOC-10-001916	CPRE2010	JY	SY
G		ECR-10-018652	10SEP10	SW	MCW



### RECOMMENDED PCB-HOLE LAYOUT COMPONENT SIDE SHOWN

### PLATED THRU HOLES PARAMETERS

REFERENCE APPLICATION SPECIFICATION



3-100749-0	FINISH	PART NUMBER
1-100749-9		
400749-9		
100749-4		
100749-1		

THIS DRAWING IS A CONTROLLED DOCUMENT.		DESIGNED BY	SKIPPY	DATE	108-19082	REVISED BY	114-19029	DATE	100779	REVISED TO	100749
ENGINEER	108-19082	DATE	114-19029	REVISED BY	100779	REVISED TO	100749	DATE	100779	REVISED TO	100749
DATE	114-19029	REVISED BY	100779	REVISED TO	100749	DATE	100779	REVISED TO	100749	DATE	100779

THIS DRAWING IS UNPUBLISHED  
 © 2005 TELCORDIA ELECTRONICS CORPORATION. ALL RIGHTS RESERVED.

REV	DATE	DESCRIPTION	BY	CHK	APP
AD	00	SEE SHEET 1			

- ⚠ MATERIAL:  
CONTACT: PHOSPHOR BRONZE.  
HOUSING: GLASS-FILLED POLYESTER.
- ⚠ GENERAL PLATING SPECIFICATION: UNDERPLATING  
(ENTIRE CONTACT): 1.27µm MIN NICKEL AND ACTION  
PIN: 0.5µm MIN TIN/LEAD.  
FOR PLATING OF MATING SURFACES SEE APPLICABLE  
SPECIFICATION REFERENCE FOR EACH DASH NUMBER.
- ⚠ CONFORMS TO ALL TESTING ACCORDING TO IEC 61076-4-101  
PERFORMANCE LEVEL 2.
- ⚠ CONFORMS TO ALL TESTING ACCORDING TO IEC 61076-4-101  
PERFORMANCE LEVEL 1.
- ⚠ CONNECTOR TESTED AND QUALIFIED AGAINST TELCORDIA GR-1217-CORE QUALITY LEVEL 3,  
CENTRAL OFFICE APPLICATIONS.
- ⚠ CONNECTOR TESTED AND QUALIFIED AGAINST TELCORDIA GR-1217-CORE QUALITY LEVEL 3,  
UNCONTROLLED ENVIRONMENT APPLICATIONS.
- ⚠ CONNECTOR MARKED WITH PART NUMBER AND DATE CODE.  
ADDITIONAL CHARACTERS OR MARKINGS, AS WELL AS THE LOCATION  
OF THE MARKINGS, MAY BE ADDED FOR TRACEABILITY BASED UPON  
MANUFACTURERS DISCRETION.
- ⚠ PLATED-THROUGH HOLES AT 2x2mm SQUARE GRID  
PATTERN DEFINED BY CONTACT LAYOUT.
- ⚠ FOR ACTUAL PIN LOADING SEE "CONTACT LAYOUT".
- ⚠ FOR ACTUAL PIN DIMENSIONS SEE "CONTACT DIMENSIONS".
- ⚠ AREA RESERVED FOR KEYING PART (BASIC P/N 100525).
- ⚠ POLARIZATION FEATURE.
- ⚠ CONTACT CAVITIES SUITABLE FOR #4-8 HIGH CURRENT, HIGH FREQUENCY OR  
FIBRE OPTIC CONTACTS AS PER DIN 41626 (SEE ALSO NOTE 14 AND 15).
- ⚠ PATTERN FOR FIBRE OPTIC CONTACTS.
- ⚠ NOT PLATED THROUGH HOLES, TO BE REPLACED BY  $\phi 5.9^{+0.05}$  PLATED THOUGH  
HOLES IF STRAIGHT SOLDER CONTACTS ARE APPLIED.
- ⚠ NOT PLATED THROUGH HOLES.
- ⚠ TO BE MEASURED AT BOTTOM OF SHROUD.
- ⚠ CONNECTOR LUBRICATED WITH TELCORDIA APPROVED LUBRICANT.  
TECHNICAL REFERENCE: TR-NWT-001217 ISSUE 1, SEP 1992.
- ⚠ OBSOLETE PARTS: OBSOLETE CIS STREAMLINING PER D.RENAUD/D.SINISI
- ⚠ 0.76µm MIN GOLD PLATING AT MATING SURFACES.

THIS DRAWING IS A CONTROLLED DOCUMENT.		DESIGNED BY	DATE	Ytel Electronics Corporation Harrisburg, Pa 17105-3608	
DRAWN BY	DATE	DESIGNED BY	DATE	Ytel Electronics Corporation	
108-19082	10B-19082	108-19082	10B-19082	MALE ASSEMBLY, 2-PACK 2mm HM, TYPE M	
114-19029	---	114-19029	---	SIZE	DATE ISSUED
---	---	---	---	A1	100779
---	---	---	---	G=100749	---
---	---	---	---	CUSTOMER DRAWING	---
---	---	---	---	---	---

MP 480 REV 2/2005