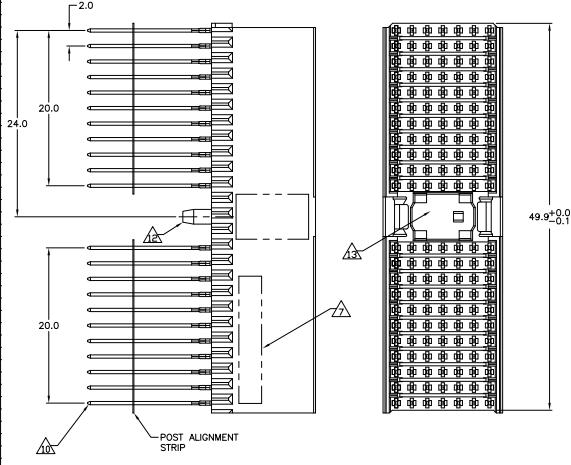


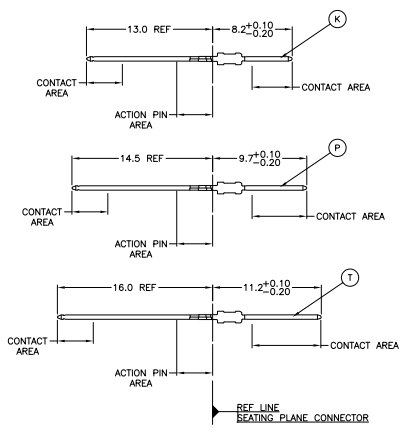
THIS DRAWING IS UNPUBLISHED
 UNLESS INDICATED OTHERWISE
 © 2008 BY THE ELECTRONICS CORPORATION. ALL RIGHTS RESERVED.

REV	DATE	DESCRIPTION	BY	CHK	APP
0		REV PER EC 0512-0318-04	08SEP05	BC	GS
A		ECR-10-019054	19SEP10	DP	MOV

**CONNECTOR ASSEMBLY
 EXAMPLARY LOADED**

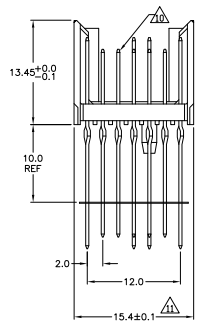


CONTACT DIMENSIONS
 SCALE 5:1



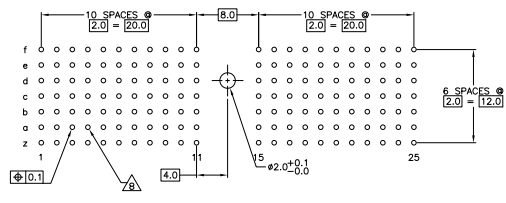
CONTACT LAYOUT

	z	a	b	c	d	e	f
1	T	P	P	P	P	P	T
2	T	P	P	P	P	P	T
3	T	P	P	P	P	P	T
4	T	P	P	P	P	P	T
5	T	P	P	P	P	P	T
6	T	P	P	P	P	P	T
7	T	P	P	P	P	P	T
8	T	P	P	P	P	P	T
9	T	P	P	P	P	P	T
10	T	P	P	P	K	P	T
MULTI PURPOSE CENTER							
15	T	P	P	P	P	P	T
16	T	P	P	P	P	P	T
17	T	P	K	P	P	P	T
18	T	P	P	P	P	P	T
19	T	P	P	P	P	P	T
20	T	P	P	P	P	P	T
21	T	P	P	P	P	P	T
22	T	P	P	P	P	P	T
23	T	P	P	P	P	P	T
24	T	P	P	P	P	P	T
25	T	P	P	P	P	P	T



**RECOMMENDED PCB-HOLE LAYOUT
 COMPONENT SIDE SHOWN**

PLATED THRU HOLES PARAMETERS
 REFERENCE APPLICATION SPECIFICATION



△△△△	1-5352521-9
△△△△	5352521-9
△△△△	5352521-4
△△△△	5352521-1
△△△△	FINISH
△△△△	PART NUMBER

THIS DRAWING IS A CONTROLLED DOCUMENT.		ECR-10-019054	REVISED	DATE	BY	APP
DESIGNED BY	DESIGNED	108-19082	REVISED	DATE	BY	APP
CHECKED BY	CHECKED	114-19029	REVISED	DATE	BY	APP
APPROVED BY	APPROVED	A100779	REVISED	DATE	BY	APP
SEE TABLE		CUSTOMER DRAWING	TABLE 4.1	REV	1	2

THIS DRAWING IS UNPUBLISHED. ALL RIGHTS RESERVED.
 © 2005 TELCORDIA CORPORATION

REV	DATE	DESCRIPTION	BY	APP
00				
01		SEE SHEET 1		

- △ MATERIAL:
CONTACT: PHOSPHOR BRONZE.
HOUSING: GLASS-FILLED POLYESTER.
- △ GENERAL PLATING SPECIFICATION: UNDERPLATING
(ENTIRE CONTACT): 1.27μm MIN NICKEL AND ACTION
PIN: 0.5μm MIN TIN.
FOR PLATING OF MATING SURFACES SEE APPLICABLE
SPECIFICATION REFERENCE FOR EACH DASH NUMBER.
- △ CONFORMS TO ALL TESTING ACCORDING TO IEC 61076-4-101
PERFORMANCE LEVEL 2.
- △ CONFORMS TO ALL TESTING ACCORDING TO IEC 61076-4-101
PERFORMANCE LEVEL 1.
- △ CONNECTOR TESTED AND QUALIFIED AGAINST TELCORDIA GR-1217-CORE QUALITY LEVEL 3,
CENTRAL OFFICE APPLICATIONS.
- △ CONNECTOR TESTED AND QUALIFIED AGAINST TELCORDIA GR-1217-CORE QUALITY LEVEL 3,
UNCONTROLLED ENVIRONMENT APPLICATIONS.
- △ CONNECTOR MARKED WITH PART NUMBER AND DATE CODE.
ADDITIONAL CHARACTERS OR MARKINGS, AS WELL AS THE LOCATION OF THE MARKINGS,
MAY BE ADDED FOR TRACEABILITY BASED UPON MANUFACTURERS DISCRETION.
- △ PLATED-THROUGH HOLES AT 2x2mm SQUARE GRID
PATTERN DEFINED BY CONTACT LAYOUT.
- △ FOR ACTUAL PIN LOADING SEE "CONTACT LAYOUT".
- △ FOR ACTUAL PIN DIMENSIONS SEE "CONTACT DIMENSIONS".
- △ TO BE MEASURED AT BOTTOM OF SHROUD.
- △ POLARIZATION FEATURE.
- △ AREA RESERVED FOR KEYING PART (BASIC P/N 100525).
- △ CONNECTOR LUBRICATED WITH BELCORE APPROVED LUBRICANT,
TECHNICAL REFERENCE: TR-NWT-001217 ISSUE 1, SEP 1992.

THIS DRAWING IS A CONTROLLED DOCUMENT.		DESIGNED BY	DATE	REVISED BY	DATE	Telcordia Corporation Harrisburg, Pa 17105-3608	
	DIMENSIONS mm	DRAWN BY 108-19082	DATE 114-19029	CHECKED BY 108-19082	DATE 114-19029	DRAWN NO A100779	REVISED TO ---
SEE SHEET 1	SEE SHEET 1	CUSTOMER DRAWING		SIZE A	DATE USE 00779	DRAWN NO G=5352521	REVISED TO ---