

4

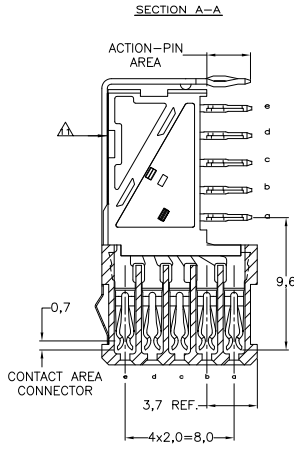
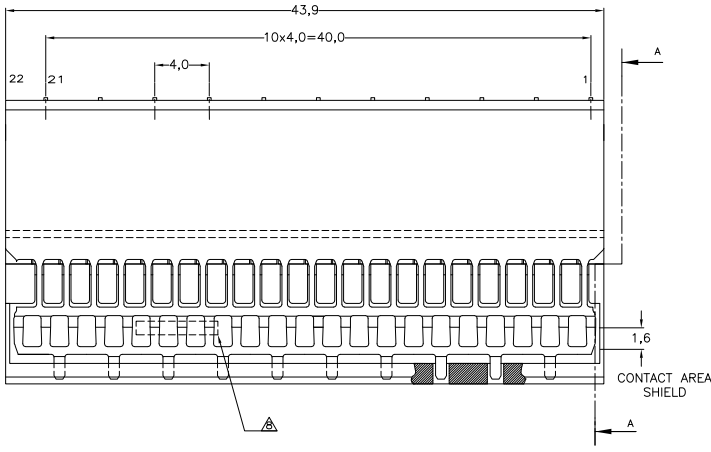
3

2

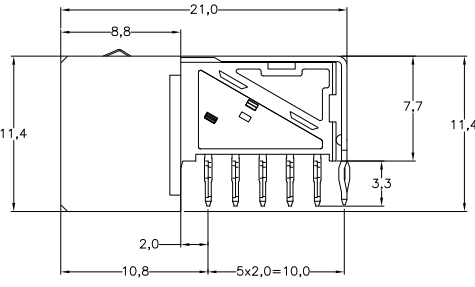
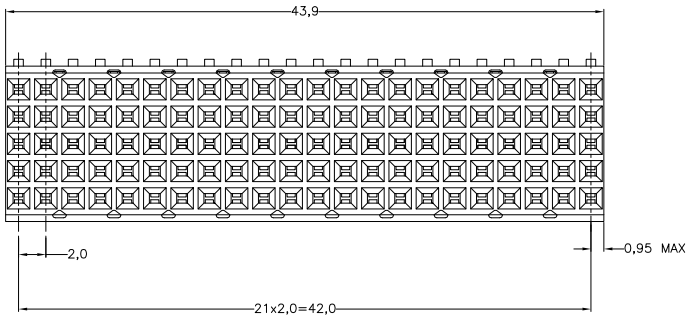
1

THIS DRAWING IS UNPUBLISHED. RELEASED FOR PUBLICATION  
 © COPYRIGHT BY TYCO ELECTRONICS CORPORATION. ALL RIGHTS RESERVED.

| LOC | DIST | REVISIONS                 |           |    |      |
|-----|------|---------------------------|-----------|----|------|
| F   | LR   | DESCRIPTION               | DATE      | BY | APPD |
| J1  |      | REVISED PER ECO-10-025129 | 18DEC2010 | RC | CW   |

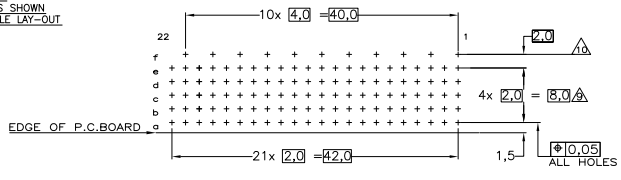


- NOTES:
- △ MATERIAL CONTACTS; PHOSPHORBRONZE
  - △ MATERIAL HOUSING; GLASSFILLED POLYESTER (GRAY)
  - △ GENERAL PLATING SPECIFICATION: UNDERPLATING (ENTIRE CONTACT); 1,27µm NICKEL MIN. AND ACTION PIN: 0,5µm TIN-LEAD MIN. FOR PLATING OF MATING SURFACES SEE APPLICABLE SPECIFICATION REFERENCE FOR EACH DASH NUMBER.
  - △ CONFORMS TO ALL TESTING ACCORDING IEC 61076-4-101 PERFORMANCE LEVEL 2.
  - △ CONFORMS TO ALL TESTING ACCORDING IEC 61076-4-101 PERFORMANCE LEVEL 1.
  - △ CONNECTOR TESTED AND QUALIFIED AGAINST TELCORDIA GR-1217-CORE QUALITY LEVEL III, CENTRAL OFFICE APPLICATIONS.
  - △ CONNECTOR LUBRICATED WITH TELCORDIA APPROVED LUBRICANT.
  - △ PLATING SHIELD:  
CONTACT AREA : 0,76µm Au MIN.  
ACTION PIN : 0,5µm SnPb MIN.  
REMAINDER : Ni
  - △ ASSEMBLY PRINTED WITH P/N AND DATECODE  
THE MARKING CAN APPEAR ON THE FRONT SIDE OR BACK SIDE.
  - △ HOLE PATTERN FOR FEMALE CONNECTOR TYPE B-22 COLUMNS  
110 PLATED-THROUGH HOLES AT 2x2mm SQUARE GRID
  - △ ROW "T" 11 PLATED THROUGH HOLES FOR UPERSHIELD
  - △ SHIELD MOUNTED ON CONNECTOR WITH DOUBLE SIDED ADHESIVE TAPE OR ADHESIVE
  - 12 BASIC P.N. LOWERSHIELD: 352468
  - △ OBSOLETE PARTS: OBSOLETE CIS STREAMLINING PER D.RENAUD/D.SINISI
  - △ 0.76µm MIN GOLD PLATING ON MATING SURFACES



SCALE 2,5:1  
 COMPONENT SIDE AS SHOWN  
 RECOMMENDED PCB-HOLE LAY-OUT

P.C.B. HOLE DIM. ACTION PIN  
 FOR DETAILS SEE APPLICATION SPECIFICATION



| FINISH | MATERIAL | PARTNUMBER |
|--------|----------|------------|
| △△△△△  | △        | 3-352152-0 |
| △△△△△  | △        | 352152-9   |
| △△△△△  | △        | 352152-4   |
| △△△△△  | △        | 352152-1   |

THIS DRAWING IS A CONTROLLED DOCUMENT.

|                |  |   |  |
|----------------|--|---|--|
| DRW D. TRUIJEN | 23SEP98                                | Tyco Electronics Corporation<br>a-Hertogenbosch, Netherlands.                                   |  |
| CHK -          | -                                      | Tyco Electronics Corporation<br>Z-PACK 2MM HM<br>TYPE B - 22 COLUMNS<br>PRE-SHIELDED RECEPTACLE |  |
| DIMENSIONS: MM | TOLERANCES UNLESS OTHERWISE SPECIFIED: | PRODUCT SPEC: 108-19082   | SIZE CASE CODE DRAWING TO: A2 00779 C=352152 |
| Ø-PLG ±0.2     | Ø-PLG ±0.2                             | APPLICATION SPEC: 114-19029   | RESTRICTED TO: -                             |
| Ø-PLG ±0.2     | Ø-PLG ±0.2                             | WEIGHT: -   | CUSTOMER DRAWING                             |
| Ø-PLG ±0.2     | Ø-PLG ±0.2                             | FINISH: -   | SCALE: NTS SHEET 1 OF 1 REV J1               |

AMP 1471-9 REV 31MM2000

352152