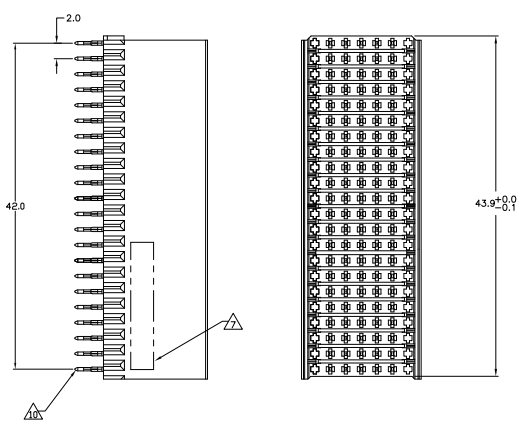


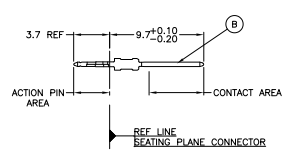
THIS DRAWING IS UNPUBLISHED. ALL RIGHTS RESERVED.
 © 2008 BY TYS ELECTRONICS CORPORATION. ALL RIGHTS RESERVED.

REV	DATE	DESCRIPTION	BY	CHK	APP
01		REVISED PER ECO-08-015034	17AM08	DH	JE
A		ECR-10-019054	18SEP10	DP	MQW

**CONNECTOR ASSEMBLY
EXAMPLARY LOADED** Δ

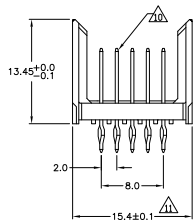


CONTACT DIMENSIONS
SCALE 5:1



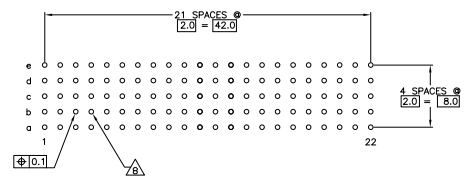
CONTACT LAYOUT

	z	a	b	c	d	e	f
1	B	B	B	B	B	B	B
2	B	B	B	B	B	B	B
3	B	B	B	B	B	B	B
4	B	B	B	B	B	B	B
5	B	B	B	B	B	B	B
6	B	B	B	B	B	B	B
7	B	B	B	B	B	B	B
8	B	B	B	B	B	B	B
9	B	B	B	B	B	B	B
10	B	B	B	B	B	B	B
11	B	B	B	B	B	B	B
12	B	B	B	B	B	B	B
13	B	B	B	B	B	B	B
14	B	B	B	B	B	B	B
15	B	B	B	B	B	B	B
16	B	B	B	B	B	B	B
17	B	B	B	B	B	B	B
18	B	B	B	B	B	B	B
19	B	B	B	B	B	B	B
20	B	B	B	B	B	B	B
21	B	B	B	B	B	B	B
22	B	B	B	B	B	B	B



RECOMMENDED PCB-HOLE LAYOUT
COMPONENT SIDE SHOWN

PLATED THRU HOLES PARAMETERS
REFERENCE APPLICATION SPECIFICATION



Δ	1-5352132-9
Δ	5352132-9
Δ	5352132-4
Δ	5352132-1
Δ	PART NUMBER

THIS DRAWING IS A CONTROLLED DOCUMENT.		TYS ELECTRONICS CORPORATION	
DESIGNER	DATE	BY	DATE
108-19029	114-19029	100779	5-352132
SEE TABLE	CUSTOMER DRAWING	SCALE	SHEET
		4:1	1 of 2

THIS DRAWING IS UNPUBLISHED
 UNLESS INDICATED OTHERWISE
 ALL RIGHTS RESERVED

REV	DATE	DESCRIPTION	BY	APP
00				
01		SEE SHEET 1		

- △ MATERIAL:
CONTACT: PHOSPHOR BRONZE.
HOUSING: GLASS-FILLED POLYESTER.
- △ GENERAL PLATING SPECIFICATION: UNDERPLATING
(ENTIRE CONTACT): 1.27μm MIN NICKEL AND ACTION
PIN: 0.5μm MIN TIN.
FOR PLATING OF MATING SURFACES SEE APPLICABLE
SPECIFICATION REFERENCE FOR EACH DASH NUMBER.
- △ CONFORMS TO ALL TESTING ACCORDING TO IEC 61076-4-101
PERFORMANCE LEVEL 2.
- △ CONFORMS TO ALL TESTING ACCORDING TO IEC 61076-4-101
PERFORMANCE LEVEL 1.
- △ CONNECTOR TESTED AND QUALIFIED AGAINST TELCORDIA GR-1217-CORE QUALITY LEVEL 3,
CENTRAL OFFICE APPLICATIONS.
- △ CONNECTOR TESTED AND QUALIFIED AGAINST TELCORDIA GR-1217-CORE QUALITY LEVEL 3,
UNCONTROLLED ENVIRONMENT APPLICATIONS.
- △ CONNECTOR MARKED WITH PART NUMBER AND DATE CODE
ADDITIONAL CHARACTERS OR MARKINGS, AS WELL AS THE LOCATION OF THE MARKINGS,
MAY BE ADDED FOR TRACEABILITY BASED UPON MANUFACTURERS DISCRETION.
- △ PLATED-THROUGH HOLES AT 2x2mm SQUARE GRID
PATTERN DEFINED BY CONTACT LAYOUT.
- △ FOR ACTUAL PIN LOADING SEE "CONTACT LAYOUT".
- △ FOR ACTUAL PIN DIMENSIONS SEE "CONTACT DIMENSIONS".
- △ TO BE MEASURED AT BOTTOM OF SHROUD.
- △ CONNECTOR LUBRICATED WITH BELCORE APPROVED LUBRICANT,
TECHNICAL REFERENCE: TR-NWT-001217 ISSUE 1, SEP 1992.

THIS DRAWING IS A CONTROLLED DOCUMENT.		DESIGNED BY	TRAVAR	DATE	11/05/92	REVISED BY	TRAVAR	DATE	11/05/92	REVISED BY	TRAVAR	DATE	11/05/92	REVISED BY	TRAVAR	DATE	11/05/92		
DRAWN BY		TRAVAR	DATE	11/05/92	CHECKED BY		TRAVAR	DATE	11/05/92	APPROVED BY		TRAVAR	DATE	11/05/92	CUSTOMER DRAWING		DATE	11/05/92	
DIMENSIONS		mm		TOLERANCE LIMITS		FRACTIONAL DECIMAL		FRACTIONAL DECIMAL		FRACTIONAL DECIMAL		FRACTIONAL DECIMAL		FRACTIONAL DECIMAL		FRACTIONAL DECIMAL		FRACTIONAL DECIMAL	
DRAWING		SEE SHEET 1		SEE SHEET 1		SEE SHEET 1		SEE SHEET 1		SEE SHEET 1		SEE SHEET 1		SEE SHEET 1		SEE SHEET 1		SEE SHEET 1	
PART NO.		108-19082		REVISED BY		TRAVAR		DATE		11/05/92		REVISED BY		TRAVAR		DATE		11/05/92	
PART NO.		114-19029		REVISED BY		TRAVAR		DATE		11/05/92		REVISED BY		TRAVAR		DATE		11/05/92	
PART NO.		A100779		REVISED BY		TRAVAR		DATE		11/05/92		REVISED BY		TRAVAR		DATE		11/05/92	
PART NO.		G=5.3521.32		REVISED BY		TRAVAR		DATE		11/05/92		REVISED BY		TRAVAR		DATE		11/05/92	
PART NO.		A100779		REVISED BY		TRAVAR		DATE		11/05/92		REVISED BY		TRAVAR		DATE		11/05/92	
PART NO.		G=5.3521.32		REVISED BY		TRAVAR		DATE		11/05/92		REVISED BY		TRAVAR		DATE		11/05/92	

MP 480 REV 2/1992