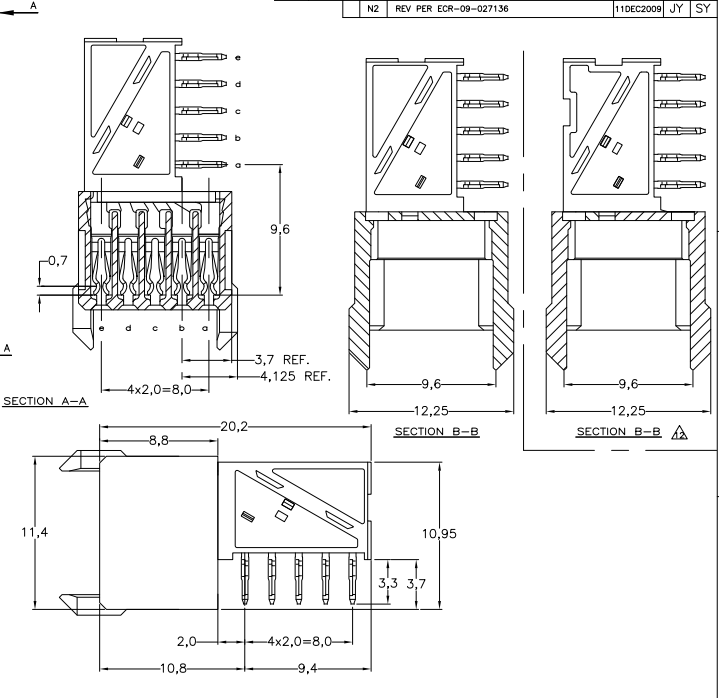
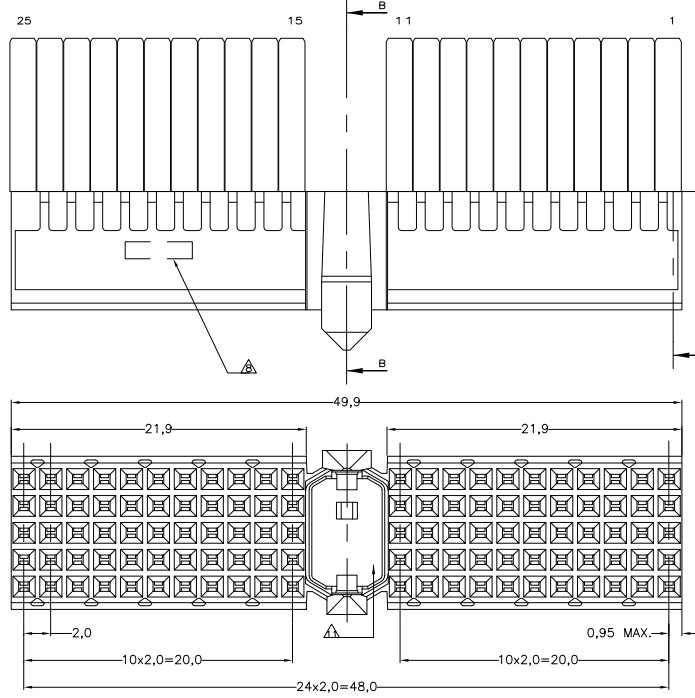
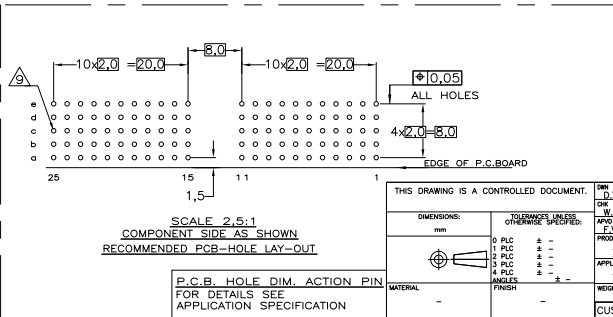


THIS DRAWING IS UNPUBLISHED. RELEASED FOR PUBLICATION
 © COPYRIGHT BY TYCO ELECTRONICS CORPORATION. ALL INTERNATIONAL RIGHTS RESERVED.

LOC		DST		REVISIONS			
H		F	LTR	DESCRIPTION	DATE	DN	APD
		N2	REV PER	ECR-09-027136	11DEC2009	JY	SY



- NOTES:**
- 1 MATERIAL CONTACT; PHOSPHORBRONZE
 - 2 MATERIAL HOUSING; GLASSFILLED POLYESTER (GRAY) UL-RATING 49V0
 - 3 GENERAL PLATING SPECIFICATION: UNDERPLATING (ENTIRE CONTACT): 1.27µm NICKEL MIN. AND ACTION PIN: 0.5µm TIN-LEAD MIN.
 - 4 FOR PLATING OF MATING SURFACES SEE APPLICABLE SPECIFICATION REFERENCE FOR EACH DASH NUMBER.
 - 5 CONFORMS TO ALL TESTING ACCORDING IEC 61076-4-101 PERFORMANCE LEVEL 2.
 - 6 CONFORMS TO ALL TESTING ACCORDING IEC 61076-4-101 PERFORMANCE LEVEL 1.
 - 7 CONNECTOR TESTED AND QUALIFIED AGAINST TELCORDIA GR-1217-CORE QUALITY LEVEL III, CENTRAL OFFICE APPLICATIONS.
 - 8 CONNECTOR TESTED AND QUALIFIED AGAINST TELCORDIA GR-1217-CORE QUALITY LEVEL III, UNCONTROLLED ENVIRONMENT APPLICATIONS.
 - 9 CONNECTOR LUBRICATED WITH TELCORDIA GR-1217-CORE APPROVED LUBRICANT.
 - 10 CONNECTOR MARKED WITH PARTNUMBER AND DATECODE.
 - 11 THE MARKING CAN APPEAR ON THE FRONT SIDE OR ON THE BACK SIDE.
 - 12 PLATED-THROUGH HOLES AT 2x2mm SQUARE GRID, 110 HOLES.
 - 13 FITS WITH INTEGRATED GROUND RETURN UPPERSHIELD, BASIC P.N. 338107 AND INTEGRATED GROUND RETURN LOWERSHIELD, BASIC P.N. 338108
 - 14 AREA RESERVED FOR CODING KEY, BASIC P.N. 100526
 - 15 CONNECTOR ASSEMBLED WITH ALTERNATE FEMALE CONTACTS.
 - 16 0.76µm MIN GOLD PLATING AT MATING SURFACES.



FINISH	MATERIAL	PARTNUMBER
3-100147-0		
1-100147-9		
100147-9		
100147-4		
100147-1		

THIS DRAWING IS A CONTROLLED DOCUMENT.

DESIGNED BY: D. TRUIREN	DRAWN BY: W. V.D. HEIJDEN	DATE: 10/11/08
APPROVED BY: F.V.D. KONINGSBRUGGE	PRODUCT SPEC: 108-19082	APPLICATION SPEC: 114-19029
MATERIAL: -	FINISH: -	WEIGHT: -

Customer Drawing: 00779 © 100147

Scale: NTS, Sheet 1 of 1, Rev N2