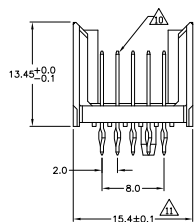
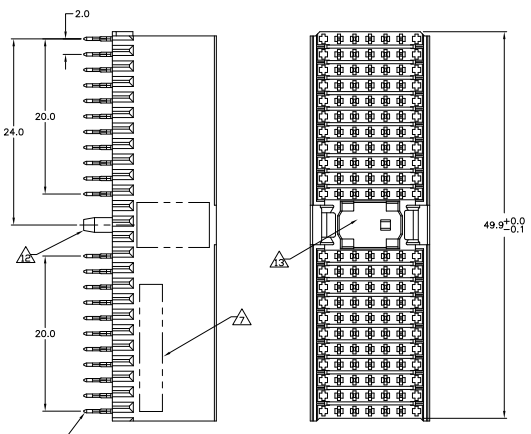


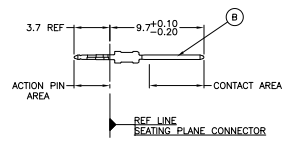
THIS DRAWING IS UNPUBLISHED. RELEASED FOR PUBLICATION BY TYSO ELECTRONICS CORPORATION. ALL RIGHTS RESERVED.

REVIEWS		DATE	BY	APP
D1	REV PER ECR-10-00862	18JAN2010	JY	SY
E	ECR-10-018652	10SEP10	SW	MGW

**CONNECTOR ASSEMBLY
EXAMPLARY LOADED** Δ



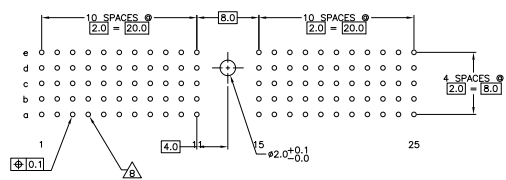
CONTACT DIMENSIONS
SCALE 5:1



CONTACT LAYOUT

	z	a	b	c	d	e	f
1	B	B	B	B	B	B	B
2	B	B	B	B	B	B	B
3	B	B	B	B	B	B	B
4	B	B	B	B	B	B	B
5	B	B	B	B	B	B	B
6	B	B	B	B	B	B	B
7	B	B	B	B	B	B	B
8	B	B	B	B	B	B	B
9	B	B	B	B	B	B	B
10	B	B	B	B	B	B	B
MULTI PURPOSE CENTER							
15	B	B	B	B	B	B	B
16	B	B	B	B	B	B	B
17	B	B	B	B	B	B	B
18	B	B	B	B	B	B	B
19	B	B	B	B	B	B	B
20	B	B	B	B	B	B	B
21	B	B	B	B	B	B	B
22	B	B	B	B	B	B	B
23	B	B	B	B	B	B	B
24	B	B	B	B	B	B	B
25	B	B	B	B	B	B	B

**RECOMMENDED PCB-HOLE LAYOUT
COMPONENT SIDE SHOWN**



PLATED THRU HOLES PARAMETERS
REFERENCE APPLICATION SPECIFICATION

Δ	3-188398-0
Δ	1-188398-9
Δ	188398-9
Δ	188398-4
Δ	188398-1
FINISH	PART NUMBER

THIS DRAWING IS A CONTROLLED DOCUMENT. TYSO ELECTRONICS CORPORATION, Harrisburg, Pa 17105-3608

DESIGNED BY: J. CARRO, CHECKED BY: T. SKIFFER, DATE: 108-19082

DATE: 114-19029, REV: 108-19082

CUSTOMER DRAWING: A100779, G-188398

DATE: 114-19029, REV: 108-19082

SCALE: 4:1, SHEET: 1 OF 2

THIS DRAWING IS UNPUBLISHED
 © 2008 TELCORDIA CORPORATION ALL RIGHTS RESERVED

REVISES		DATE	BY	APP'D
AD	00			

- △ MATERIAL:
CONTACT: PHOSPHOR BRONZE.
HOUSING: GLASS-FILLED POLYESTER.
- △ GENERAL PLATING SPECIFICATION: UNDERPLATING
(ENTIRE CONTACT): 1.27µm MIN NICKEL AND ACTION
PIN: 0.5µm MIN TIN LEAD.
FOR PLATING OF MATING SURFACES SEE APPLICABLE
SPECIFICATION REFERENCE FOR EACH DASH NUMBER.
- △ CONFORMS TO ALL TESTING ACCORDING TO IEC 61076-4-101
PERFORMANCE LEVEL 2.
- △ CONFORMS TO ALL TESTING ACCORDING TO IEC 61076-4-101
PERFORMANCE LEVEL 1.
- △ CONNECTOR TESTED AND QUALIFIED AGAINST TELCORDIA GR-1217-CORE QUALITY LEVEL 3,
CENTRAL OFFICE APPLICATIONS.
- △ CONNECTOR TESTED AND QUALIFIED AGAINST TELCORDIA GR-1217-CORE QUALITY LEVEL 3,
UNCONTROLLED ENVIRONMENT APPLICATIONS.
- △ CONNECTOR MARKED WITH PART NUMBER AND DATE CODE.
ADDITIONAL CHARACTERS OR MARKINGS, AS WELL AS THE LOCATION OF THE MARKINGS,
MAY BE ADDED FOR TRACEABILITY BASED UPON MANUFACTURERS DISCRETION.
- △ PLATED-THROUGH HOLES AT 2x2mm SQUARE GRID
PATTERN DEFINED BY CONTACT LAYOUT.
- △ FOR ACTUAL PIN LOADING SEE "CONTACT LAYOUT".
- △ FOR ACTUAL PIN DIMENSIONS SEE "CONTACT DIMENSIONS".
- △ TO BE MEASURED AT BOTTOM OF SHROUD.
- △ POLARIZATION FEATURE.
- △ AREA RESERVED FOR KEYING PART (BASIC P/N 100525).
- △ CONNECTOR LUBRICATED WITH BELCORE APPROVED LUBRICANT,
TECHNICAL REFERENCE: TR-NWT-001217 ISSUE 1, SEP 1992.
- △ 0.76µm MIN GOLD PLATING AT MATING SURFACES.

THIS DRAWING IS A CONTROLLED DOCUMENT.		DESIGNED BY	100001	Telco Electronics Corporation Harrisburg, Pa 17105-3608	
DRAWN BY		100001	DATE	1008-19082	
CHECKED BY		100001	DATE	1008-19082	
APPROVED BY		100001	DATE	1008-19082	
CUSTOMER DRAWING		DATE	100779	ISSUE	188398
SEE SHEET 1		SEE SHEET 1	SEE SHEET 1	SEE SHEET 1	SEE SHEET 1