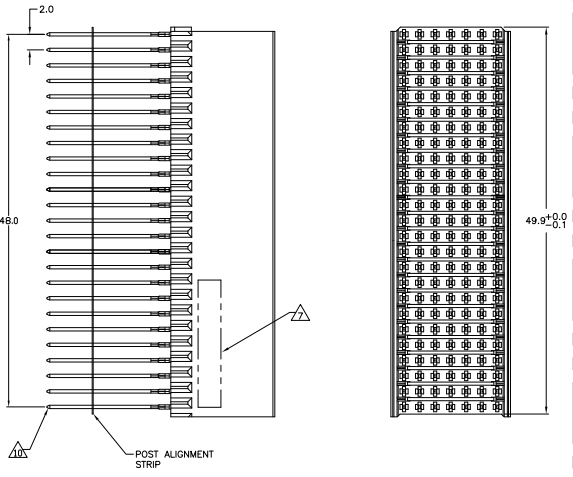


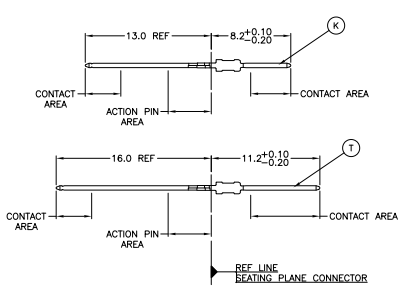
THIS DRAWING IS UNPUBLISHED  
 UNLESS INDICATED OTHERWISE  
 ALL RIGHTS RESERVED

REV	DATE	DESCRIPTION	BY	CHK	APP
B	REV PER EC 0512-0306-05		23M/106	BC	GS
C	ECR-10-019054		19SEP10	DP	MOV

**CONNECTOR ASSEMBLY  
 EXAMPLARY LOADED**

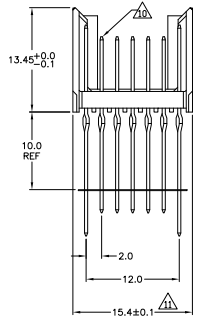


**CONTACT DIMENSIONS**  
 SCALE 5:1



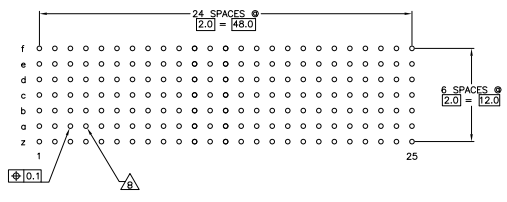
**CONTACT LAYOUT**

	z	a	b	c	d	e	f
1	T	K	K	K	K	K	T
2	T	K	K	K	K	K	T
3	T	K	K	K	K	K	T
4	T	K	K	K	K	K	T
5	T	K	K	K	K	K	T
6	T	K	K	K	K	K	T
7	T	K	K	K	K	K	T
8	T	K	K	K	K	K	T
9	T	K	K	K	K	K	T
10	T	K	K	K	K	K	T
11	T	K	K	K	K	K	T
12	T	K	K	K	K	K	T
13	T	K	K	K	K	K	T
14	T	K	K	K	K	K	T
15	T	K	K	K	K	K	T
16	T	K	K	K	K	K	T
17	T	K	K	K	K	K	T
18	T	K	K	K	K	K	T
19	T	K	K	K	K	K	T
20	T	K	K	K	K	K	T
21	T	K	K	K	K	K	T
22	T	K	K	K	K	K	T
23	T	K	K	K	K	K	T
24	T	K	K	K	K	K	T
25	T	K	K	K	K	K	T



**RECOMMENDED PCB-HOLE LAYOUT  
 COMPONENT SIDE SHOWN**

**PLATED THRU HOLES PARAMETERS**  
 REFERENCE APPLICATION SPECIFICATION



△	1-5106510-9
△	5106510-9
△	5106510-4
△	5106510-1
△	PART NUMBER

THIS DRAWING IS A CONTROLLED DOCUMENT.

DESIGNER	DATE	BY	DATE
108-19082	114-19029	108-19082	114-19029
108-19082	114-19029	108-19082	114-19029

Customer Drawing: A100779 (S)=5106510

THIS DRAWING IS A CONTROLLED DOCUMENT. THIS DRAWING IS A CONTROLLED DOCUMENT. THIS DRAWING IS A CONTROLLED DOCUMENT.

THIS DRAWING IS UNCLASSIFIED  
 RELEASED FOR PUBLICATION  
 © 2010 TELCOR CORPORATION ALL RIGHTS RESERVED

REV	DATE	DESCRIPTION	BY	CHK	APP
00					
		SEE SHEET 1			

- △ MATERIAL:  
CONTACT: PHOSPHOR BRONZE.  
HOUSING: GLASS-FILLED POLYESTER.
- △ GENERAL PLATING SPECIFICATION: UNDERPLATING  
(ENTIRE CONTACT): 1.27µm MIN NICKEL AND ACTION  
PIN: 0.5µm MIN TIN.  
FOR PLATING OF MATING SURFACES SEE APPLICABLE  
SPECIFICATION REFERENCE FOR EACH DASH NUMBER.
- △ CONFORMS TO ALL TESTING ACCORDING TO IEC 61076-4-101  
PERFORMANCE LEVEL 2.
- △ CONFORMS TO ALL TESTING ACCORDING TO IEC 61076-4-101  
PERFORMANCE LEVEL 1.
- △ CONNECTOR TESTED AND QUALIFIED AGAINST TELCORDIA GR-1217-CORE QUALITY LEVEL 3,  
CENTRAL OFFICE APPLICATIONS.
- △ CONNECTOR TESTED AND QUALIFIED AGAINST TELCORDIA GR-1217-CORE QUALITY LEVEL 3,  
UNCONTROLLED ENVIRONMENT APPLICATIONS.
- △ CONNECTOR MARKED WITH PART NUMBER AND DATE CODE.  
ADDITIONAL CHARACTERS OR MARKINGS, AS WELL AS THE LOCATION OF THE MARKINGS,  
MAY BE ADDED FOR TRACEABILITY BASED UPON MANUFACTURERS DISCRETION.
- △ PLATED-THROUGH HOLES AT 2x2mm SQUARE GRID  
PATTERN DEFINED BY CONTACT LAYOUT.
- △ FOR ACTUAL PIN LOADING SEE "CONTACT LAYOUT".
- △ FOR ACTUAL PIN DIMENSIONS SEE "CONTACT DIMENSIONS".
- △ TO BE MEASURED AT BOTTOM OF SHROUD.
- △ CONNECTOR LUBRICATED WITH BELCORE APPROVED LUBRICANT,  
TECHNICAL REFERENCE: TR-NWT-001217 ISSUE 1, SEP 1992.

THIS DRAWING IS A CONTROLLED DOCUMENT.		DESIGNED BY	STAFFORD	DATE	11/14/02	Tyco Electronics Corporation Harrisburg, Pa 17105-2608	
DRAWING NO.		108-19029	DESIGNED BY	STAFFORD	DATE	11/14/02	MALE ASSEMBLY, 2-PACK 2mm HM, TYPE B
REVISED		SEE SHEET 1	DESIGNED BY	STAFFORD	DATE	11/14/02	
PART NO.		108-19029	DESIGNED BY	STAFFORD	DATE	11/14/02	
REVISED		SEE SHEET 1	DESIGNED BY	STAFFORD	DATE	11/14/02	
CUSTOMER DRAWING			DESIGNED BY	STAFFORD	DATE	11/14/02	
DRAWING NO.		108-19029	DESIGNED BY	STAFFORD	DATE	11/14/02	
REVISED		SEE SHEET 1	DESIGNED BY	STAFFORD	DATE	11/14/02	
PART NO.		108-19029	DESIGNED BY	STAFFORD	DATE	11/14/02	
REVISED		SEE SHEET 1	DESIGNED BY	STAFFORD	DATE	11/14/02	
CUSTOMER DRAWING			DESIGNED BY	STAFFORD	DATE	11/14/02	