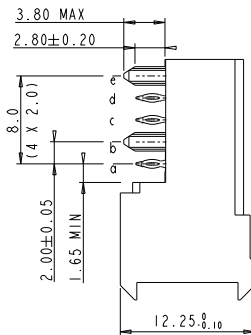
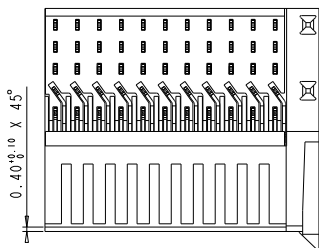


Tous droits strictement réservés. Reproduction ou communication à des tiers interdite sous quelque forme que ce soit sans l'autorisation écrite du propriétaire. Propriété de FCI. Droits de reproduction FCI.

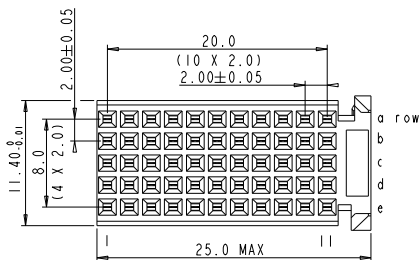
FCI

All rights strictly reserved. Reproduction or issue to third parties in any form without the written permission of the owner is prohibited without written permission of the owner. Property of FCI. Copyright FCI.



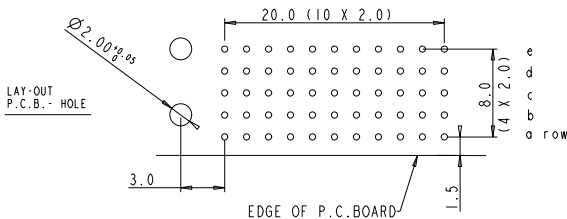
PERFORMANCE CHARACTERISTICS

CURRENT RATING 1.5A AT 20°C (FULLY LOADED)
 1 A AT 70°C (FULLY LOADED)
 RATED VOLTAGE : 500 V AC (CONT /CONT)
 OPERATING TEMPERATURE : -55°C TO 125°C
 CONTACT RESISTANCE 20 mΩ MAX
 INSERTION FORCE : 0.75N MAX/CONT
 EXTRACTION FORCE : 0.15N MIN/CONT
 INSULATION RESISTANCE : 10⁴ MΩ MIN



NOTES 1. " " LEAD FREE INDICATOR : LF-LEAD FREE

2. THIS PRODUCT IS CSA APPROVED.
 THIS PRODUCT IS UL RECOGNIZED.
 3. FOR RECOMMENDED PTH DIMENSIONS REFER DRAWING :
 BS.A.201572.001
 4. THIS PRODUCT (LF) MEETS EUROPEAN UNION DIRECTIVES AND
 OTHER COUNTRY REGULATIONS AS DESCRIBED IN GS-22-008



Material		Spec ref	
Mat code		tolerance	projection
Heat treat		IDEC ± 0.2 IDEC 200C ± 0.1 200C ANGLES ± 1° MAX	MM
Plating/Finish		size	Scale
Dr	W. Panis	07-04-92	A4
Eng			2.000
Chr		Product family	MILLIPACS
Appr		Model Name	ECN
		Model Revision	DG05-0278
			REL Level

rev	ecn no	dr	date
A	CONVERSION REVISION 05	KN	14-09-01
B	105-0093	MINI	08-06-05
C	DG05-0278	KASON	02-08-05
-	-	-	-
-	-	-	-
-	-	-	-
05	Improved Power Added	R.M	110601

FCI	title	MPACS 5+2R RA RCP CONN TYPE C	dwg no	BSC201418003	Rev.	C
Prof/E file	catalog	HM2003PA5100	CUSTOMER DRAWING	sheet	1 of 1	

PDM: Rev. C STATUS: Released

Printed: Feb 10, 2006