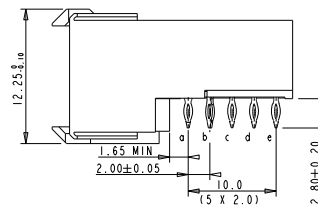
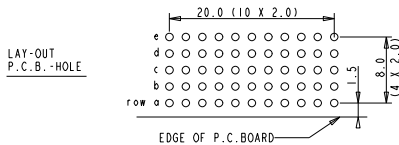
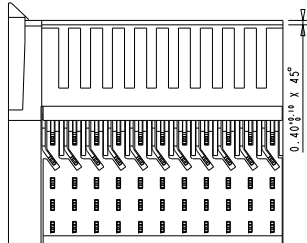
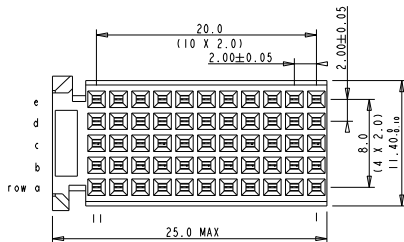


Tous droits strictement réservés. Reproduction ou communication à des tiers interdite sous quelque forme que ce soit sans l'autorisation écrite du propriétaire. Property of FCI. Droits de reproduction FCI.

FCI

All rights strictly reserved. Reproduction or issue to third parties in any form without the written permission of the owner. Property of FCI. Copyright FCI.



PERFORMANCE CHARACTERISTICS

- CURRENT RATING : 1.5A AT 20°C (FULLY LOADED)
- 1 A AT 70°C (FULLY LOADED)
- RATED VOLTAGE : 500 V AC (CONT /CONT)
- OPERATING TEMPERATURE : -55°C TO 125°C
- CONTACT RESISTANCE 20 MΩ MAX
- INSERTION FORCE : 0.75N MAX/CONT
- EXTRACTION FORCE : 0.15N MIN/CONT
- INSULATION RESISTANCE : 10⁴ MΩ MIN

- NOTES**
- " " LEAD FREE INDICATOR :LF=LEAD FREE
" " PERFORMANCE LEVEL INDICATOR (REF DWG NO. BSC 201844.003)
 - THIS PRODUCT IS CSA APPROVED.
THIS PRODUCT IS UL RECOGNIZED.
 - FOR RECOMMENDED PTH DIMENSIONS REFER DRAWING :BS.A.201572.001
 - THIS PRODUCT (LF) MEETS EUROPEAN UNION DIRECTIVES AND OTHER COUNTRY REGULATIONS AS DESCRIBED IN GS-22-008

| rev | ecn no | dr | date |
|-----|------------------------|-------|----------|
| A | CONVERSION REVISION 04 | KN | 14-09-01 |
| B | 105-0093 | MINI | 11-06-05 |
| C | DG05-0278 | KASON | 02-08-05 |
| - | - | - | - |
| - | - | - | - |
| - | - | - | - |

| | | | |
|----------------|----------|--|------------------|
| Material | | Spec ref | |
| Mat code | | tolerance | projection |
| Heat treat | | ISO C ± 0.2 ISO E 20 E C ± 0.1 ISO E ANGLES ± 1° MCKEN | MM |
| Plating/Finish | | size A4 | Scale 2.000 |
| Dr W. Panis | 07/04/92 | Product family MILLIPACS | ECN DG05-0278 |
| Eng | | Model Name | REL Level |
| Chr | | Model Revision | |
| Appr | | | |
| FCI | title | MPACS 5R RA RCP CONN TYPE A | Rev. C |
| Prof/E file | catalog | HM2020PA5100 | CUSTOMER DRAWING |
| PDM: Rev. C | | STATUS: Released | |