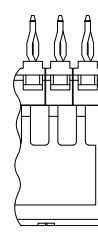
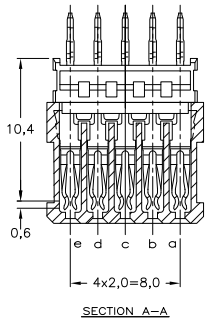
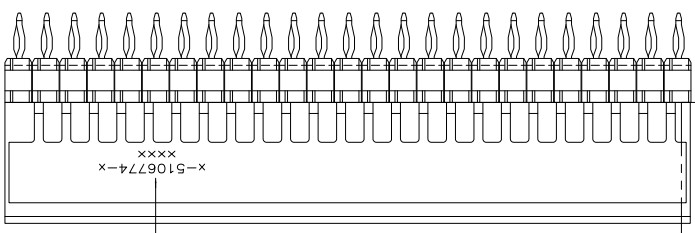
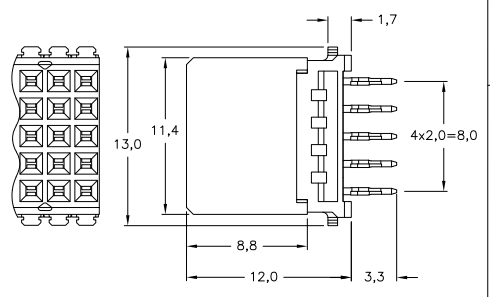
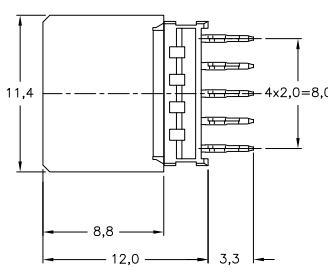
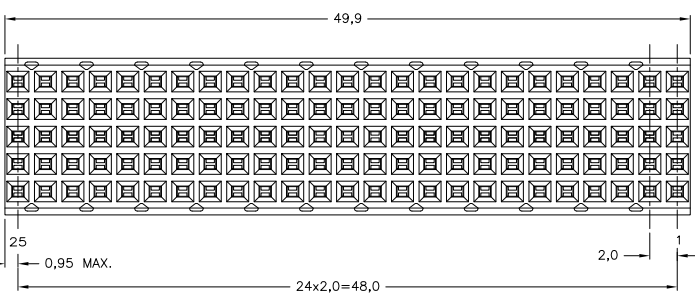


THIS DRAWING IS UNPUBLISHED. RELEASED FOR PUBLICATION  
 BY TYCO ELECTRONICS CORPORATION. ALL RIGHTS RESERVED.

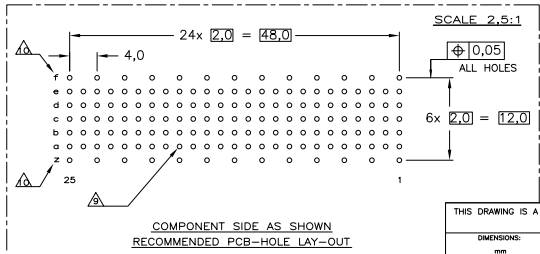
LOC	DIST	REVISIONS			
F	LR	DESCRIPTION	DATE	BY	APPD
B		EH10-0680-05	30MAY05	BSV	BM
B1		REVISED PER ECO-10-000444	19JAN10	KK	HMR
C		ECR-10-019054	15SEP10	DP	MQW



ALTERNATE FORM



- NOTES:
- △ MATERIAL CONTACT: PHOSPHORBRONZE  
MATERIAL HOUSING: GLASSFILLED POLYESTER  
UL-RATING 94V0 (GRAY)
  - △ GENERAL PLATING SPECIFICATION: UNDERPLATING (ENTIRE CONTACT):  
1.27µm NICKEL MIN. AND ACTION PIN: 0.5µm TIN MIN.  
FOR PLATING OF MATING SURFACES SEE APPLICABLE  
SPECIFICATION REFERENCE FOR EACH DASH NUMBER.
  - △ CONFORMS TO ALL TESTING ACCORDING IEC 61076-4-101  
PERFORMANCE LEVEL 2.
  - △ CONFORMS TO ALL TESTING ACCORDING IEC 61076-4-101  
PERFORMANCE LEVEL 1.
  - △ CONNECTOR TESTED AND QUALIFIED AGAINST TELCORDIA GR-1217-CORE  
QUALITY LEVEL III, CENTRAL OFFICE APPLICATIONS.
  - △ CONNECTOR TESTED AND QUALIFIED AGAINST TELCORDIA GR-1217-CORE  
QUALITY LEVEL III, UNCONTROLLED ENVIRONMENT APPLICATIONS.
  - △ CONNECTOR LUBRICATED WITH TELCORDIA GR-1217-CORE  
APPROVED LUBRICANT.
  - △ CONNECTOR PRINTED WITH PARTNUMBER AND DATECODE.
  - △ PLATED-THROUGH HOLES AT 2x2mm SQUARE GRID (125 HOLES).
  - △ HOLES IN ROW f and z FOR POSSIBLE FUTURE USE OF  
GROUND RETURN SHIELD. (SHIELDS NOT YET TOOLED)
  - △ OBSOLETE PARTS: OBSOLETE CIS STREAMLINING PER D.RENAUD/D.SINISI



P.C.B. HOLE DIM. ACTION PIN  
 FOR DETAILS SEE  
 APPLICATION SPECIFICATION

THIS DRAWING IS A CONTROLLED DOCUMENT. DIM: K.N.KIRAN 13AUG2004  
 CHK: B.MCQUIL 27OCT2004  
 DRC: B.MCQUIL 27OCT2004  
 PRODUCT SPEC: 108-19082  
 APPLICATION SPEC: 114-19029  
 WEIGHT: -  
 CUSTOMER DRAWING

TYCO ELECTRONICS  
 Tyco Electronics Corporation  
 's-Hertogenbosch, 5222AR-32

Z-PACK 2mm HM TYPE B  
 125 POS. VERTICAL FEMALE  
 CONNECTOR ASSEMBLY

FINISH	MATERIAL	PARTNUMBER
△△△	△	1-5106774-9
△△△	△	5106774-9
△△△	△	5106774-4
△△△	△	5106774-1

RESTRICTED TO: -  
 SCALE: 5:1 SHEET: 1 OF 1 REV: C