

4

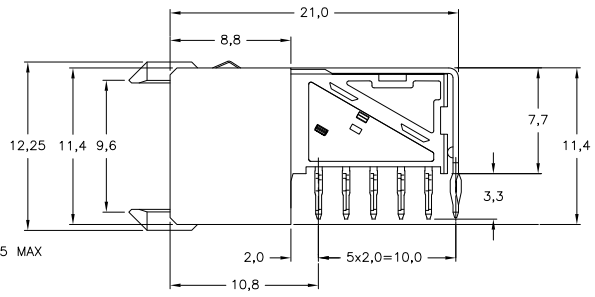
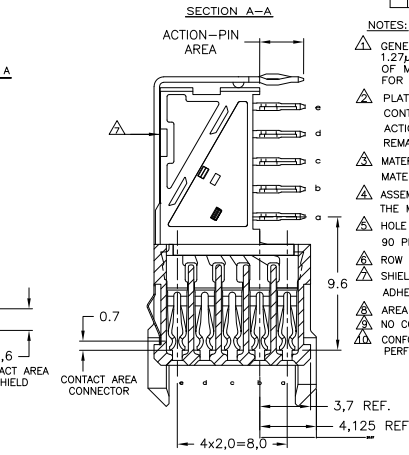
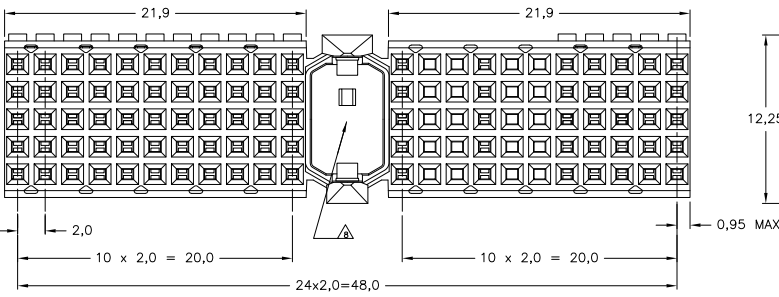
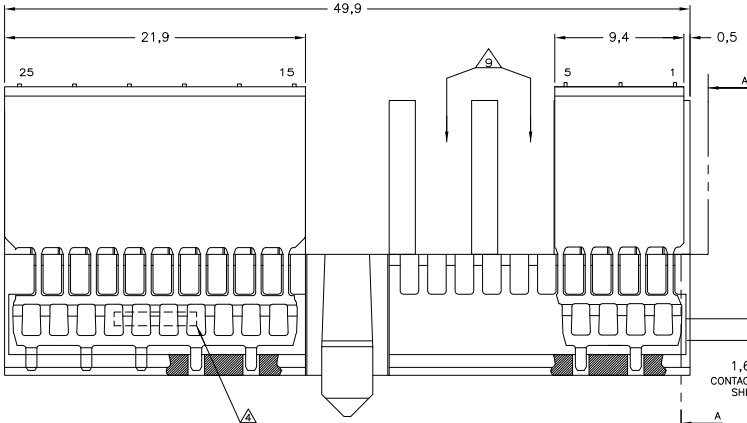
3

2

1

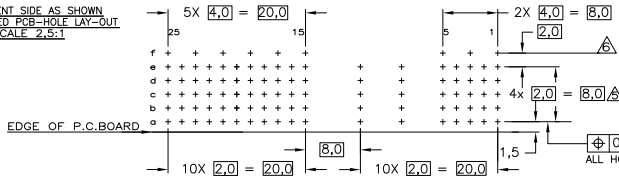
THIS DRAWING IS UNPUBLISHED. RELEASED FOR PUBLICATION.
 BY TYCO ELECTRONICS CORPORATION. ALL RIGHTS RESERVED.

LOC		DIST		REVISIONS			
F	LR	DESCRIPTION	DATE	BY	APD		
B		REVISED PER ECO-11-004288	28FEB2011	SY	CW		



- NOTES:
- △ GENERAL PLATING SPECIFICATION: UNDERPLATING (ENTIRE CONTACT): 1.27µm NICKEL MIN. AND ACTION PIN: 0.5µm TIN MIN. FOR PLATING OF MATING SURFACES SEE APPLICABLE SPECIFICATION REFERENCE FOR EACH DASH NUMBER.
 - △ PLATING SHIELD: CONTACT AREA: 0.76µm Au MIN. ACTION PIN : 0.5µm Sn MIN. REMAINDER : Ni
 - △ MATERIAL CONTACTS AND SHIELDS: PHOSPHORBRONZE
 - △ MATERIAL HOUSING: GLASSFILLED POLYESTER (GRAY)
 - △ ASSEMBLY PRINTED WITH P/N AND DATECODE
 - △ THE MARKING CAN APPEAR ON THE FRONT SIDE OR THE BACK SIDE
 - △ HOLE PATTERN FOR FEMALE CONNECTOR
 - △ 90 PLATED-THROUGH HOLES AT 2x2mm SQUARE GRID
 - △ ROW "I" 9 PLATED THROUGH HOLES FOR BOTH UPSHIELDS
 - △ SHIELDS MOUNTED ON CONNECTOR WITH DOUBLE SIDED ADHESIVE TAPE
 - △ AREA RESERVED FOR KEYING PART (BASIC P.N. 100526)
 - △ NO CONTACTS ON COLUMNS 6-7 AND 9-10
 - △ CONFORMS TO ALL TESTING ACCORDING IEC 61076-4-101 PERFORMANCE LEVEL 2.

COMPONENT SIDE AS SHOWN
 RECOMMENDED PCB-HOLE LAY-OUT
 SCALE 2.5:1



P.C.B. HOLE DIM. ACTION PIN.
 FOR DETAILS SEE
 APPLICATION SPECIFICATION

EDGE OF P.C.BOARD

THIS DRAWING IS A CONTROLLED DOCUMENT.		FINISH	MATERIAL	PARTNUMBER
DIMENSIONS: mm		24M004		5352359-1
TOLERANCES UNLESS OTHERWISE SPECIFIED:		DR: K.N.KIBAN	Tyco Electronics Corporation	
0 PL	±	CHK: B.MCOUJ	's--Hertogenbosch,5222AR-32	
1 PL	±	APD: B.MCOUJ	Z-PACK 2mm HM	
2 PL	±	PRODUCT SPEC:	TYPE A - 16 COLUMNS (J4 VERSION)	
3 PL	±	108-19082	PRE-SHIELDED RECEPTACLE	
4 PL	±	APPLICATION SPEC:	SIZE	ONE CODE DRAWING NO
ANGLES	±	114-19029	A2	00779
FINISH		HEIGHT	C=5352359	
MATERIAL		FINISH	CUSTOMER DRAWING	
		RESTRICTED TO	SCALE: 5:1 SHEET 1 OF 1 REV B	

AMP 1471-9 REV 31MAR2000

5352359

A