

4

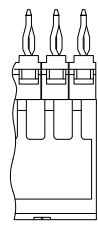
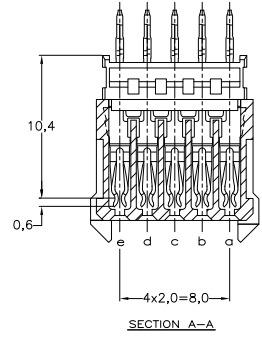
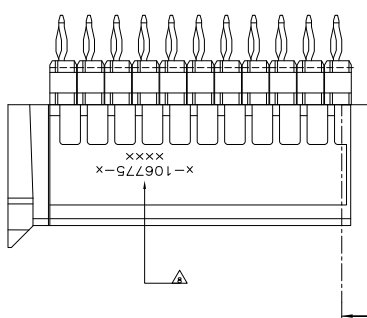
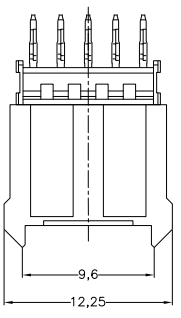
3

2

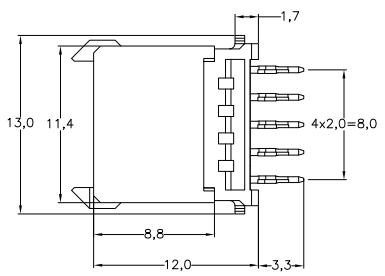
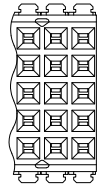
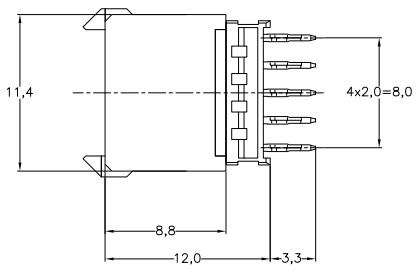
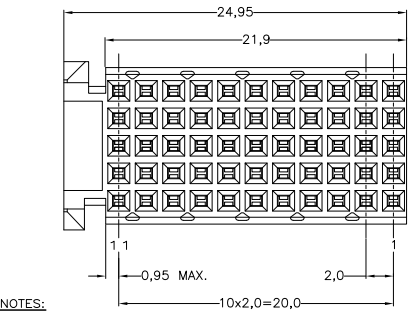
1

THIS DRAWING IS UNPUBLISHED. RELEASED FOR PUBLICATION. COPYRIGHT BY TYCO ELECTRONICS CORPORATION. ALL RIGHTS RESERVED.

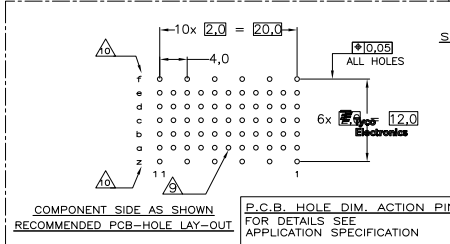
| LOC | DIST | REVISIONS | | | |
|-----|------|---------------------------|-----------|----|------|
| F | LWR | DESCRIPTION | DATE | BY | APPD |
| L | | REVISED PER ECO-10-011742 | 03JUN2010 | SA | SY |
| M | | ECR-10-019054 | 15SEP10 | DP | MQW |
| - | | | | | |



ALTERNATE FORM



- NOTES:
- △ MATERIAL CONTACT: PHOSPHORBRONZE
MATERIAL HOUSING: GLASSFILLED POLYESTER
UL-RATING 94V0 (GRAY)
 - △ GENERAL PLATING SPECIFICATION: UNDERPLATING (ENTIRE CONTACT): 1,27µm NICKEL MIN. AND ACTION PIN: 0,5µm TIN-LEAD MIN.
FOR PLATING OF MATING SURFACES SEE APPLICABLE SPECIFICATION REFERENCE FOR EACH DASH NUMBER.
 - △ CONFORMS TO ALL TESTING ACCORDING IEC 61076-4-101 PERFORMANCE LEVEL 2.
 - △ CONFORMS TO ALL TESTING ACCORDING IEC 61076-4-101 PERFORMANCE LEVEL 1.
 - △ CONNECTOR TESTED AND QUALIFIED AGAINST TELCORDIA GR-1217-CORE QUALITY LEVEL III, CENTRAL OFFICE APPLICATIONS.
 - △ CONNECTOR TESTED AND QUALIFIED AGAINST TELCORDIA GR-1217-CORE QUALITY LEVEL III, UNCONTROLLED ENVIRONMENT APPLICATIONS.
 - △ CONNECTOR LUBRICATED WITH TELCORDIA APPROVED LUBRICANT.
 - △ CONNECTOR PRINTED WITH PARTNUMBER AND DATECODE.
 - △ PLATED-THROUGH HOLES AT 2x2mm SQUARE GRID (55 HOLES).
 - △ HOLES IN ROW f AND z FOR POSSIBLE FUTURE USE OF GROUND RETURN SHIELD. (SHIELDS NOT YET TOOLED)
 - △ 0,76µm MIN COLD PLATING AT MATING SURFACES



THIS DRAWING IS A CONTROLLED DOCUMENT.

| | | |
|-----------------------------|-------------------------|-------------------------------|
| DESIGNER: L.V.D.HELDEN | DATE: 14APR97 | TYCO ELECTRONICS CORPORATION |
| CHECKED: D. TRUBEN | DATE: 14APR97 | s-Hertogenbosch, Netherlands. |
| NAME: F.V.KONINGSBRUGGE | PRODUCT SPEC: 108-19082 | Z-PACK 2MM HM TYPE C |
| APPLICATION SPEC: 114-19029 | WEIGHT: - | 55 POS. VERTICAL FEMALE |
| MATERIAL: - | FINISH: - | CONNECTOR ASSEMBLY |

| FINISH | MATERIAL | PARTNUMBER |
|--------|----------|------------|
| △△△ | △ | 3-106775-1 |
| △△△ | △ | 1-106775-9 |
| △△△ | △ | 106775-9 |
| △△△ | △ | 106775-4 |
| △△△ | △ | 106775-1 |

| | | | |
|------------------|-------------|----------------------|------------------|
| SIZE: A2 | DATE: 00779 | DRAWING NO: C=106775 | RESTRICTED TO: - |
| CUSTOMER DRAWING | SCALE: NTS | SHEET: 1 OF 1 | REV: M |