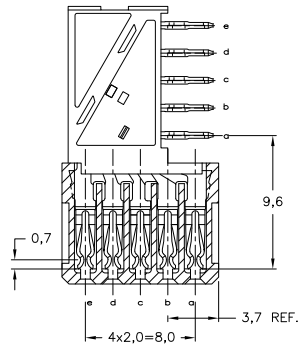
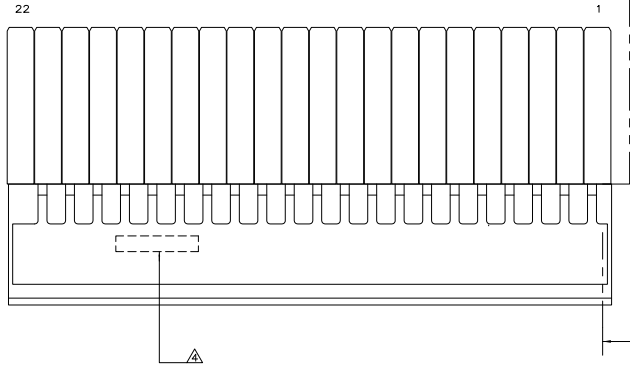
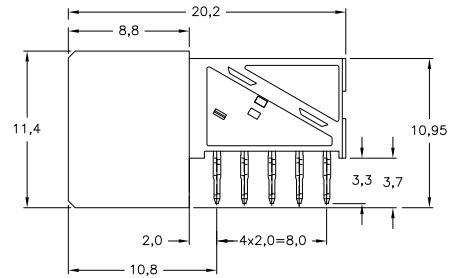
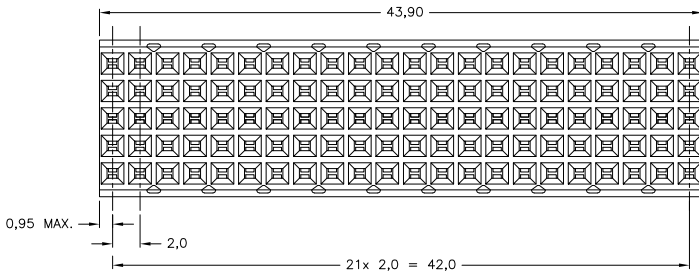


THIS DRAWING IS UNPUBLISHED. RELEASED FOR PUBLICATION
 BY TYCO ELECTRONICS CORPORATION. ALL RIGHTS RESERVED.

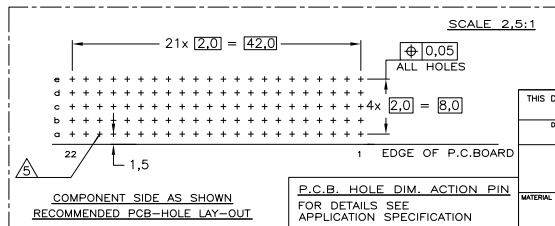
LOC		DIST		REVISIONS			
F	LR	DESCRIPTION	DATE	BY	APPD		
D		REV PER ECO-10-026201	22DEC10	RC	CW		



SECTION A-A



- NOTES:**
- △ MATERIAL CONTACT; PHOSPHORBRONZE
 MATERIAL HOUSING; GLASSFILLED POLYESTER (GRAY)
 UL-RATING 94V0.
 - △ GENERAL PLATING SPECIFICATION: UNDERPLATING
 (ENTIRE CONTACT); 1.27µm NICKEL MIN. AND ACTION
 PIR: 0.5µm TIN MIN.
 FOR PLATING OF MATING SURFACES SEE APPLICABLE
 SPECIFICATION REFERENCE FOR EACH DASH NUMBER.
 - △ CONFORMS TO ALL TESTING ACCORDING IEC 61076-4-101
 PERFORMANCE LEVEL 2.
 - △ CONNECTOR PRINTED WITH PARTNUMBER AND DATECODE
 - △ PLATED-THROUGH HOLES AT 2x2mm
 SQUARE GRID. 110 HOLES
 - △ FITS WITH INTEGRATED GROUND RETURN UPSHIELD
 BASIC P.N. 5352151
 - △ 0.76µm MIN. GOLD PLATING AT MATING SURFACES.



THIS DRAWING IS A CONTROLLED DOCUMENT.		DRW: 13AUG2004	FINISH	3-5188836-0
DIMENSIONS: mm		CHK: K.N.KIRAN	MATERIAL	5188836-1
TOLERANCES UNLESS OTHERWISE SPECIFIED:		APPD: B.MOJIB	PARTNUMBER	
Ø-PLD	±0.2	PRODUCT SPEC		
Ø-PLD	±0.2	APPLICATION SPEC		
Ø-PLD	±0.2	HEIGHT		
ANGLE				
MATERIAL	FINISH	SIZE	DATE CODE	DRAWING NO
		A2	00779	5188836
CUSTOMER DRAWING		SCALE	SHEET	REV
		5:1	1 of 1	D