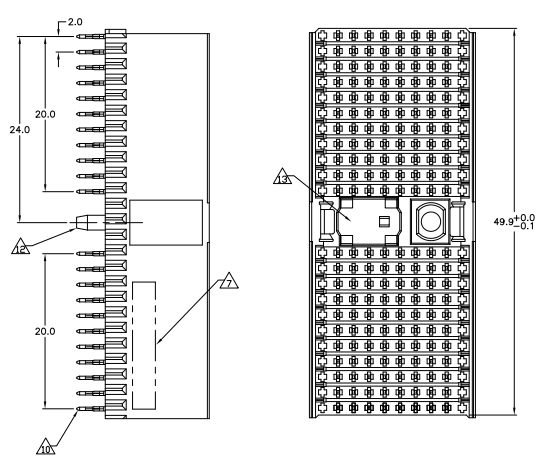


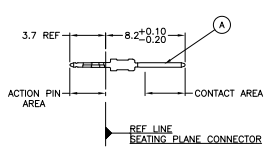
THIS DRAWING IS UNAPPROVED FOR PUBLICATION
 © 2008 Tyco Electronics Corporation ALL RIGHTS RESERVED

REV	DATE	DESCRIPTION	BY	CHK
AD 00				
C		REV PER ECR-11-003871	22FEB11	RC CW

**CONNECTOR ASSEMBLY
 EXEMPLARY LOADED**

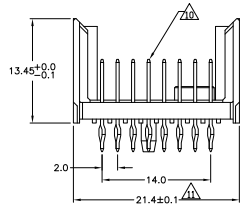


**CONTACT DIMENSIONS
 SCALE 5:1**



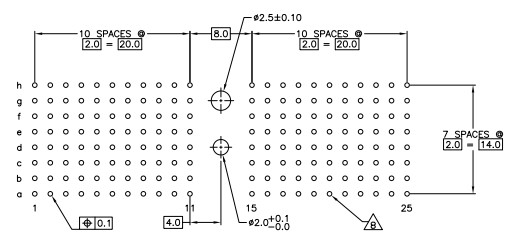
CONTACT LAYOUT

	z	a	b	c	d	e	f	g	h	i
1	A	A	A	A	A	A	A	A	A	A
2	A	A	A	A	A	A	A	A	A	A
3	A	A	A	A	A	A	A	A	A	A
4	A	A	A	A	A	A	A	A	A	A
5	A	A	A	A	A	A	A	A	A	A
6	A	A	A	A	A	A	A	A	A	A
7	A	A	A	A	A	A	A	A	A	A
8	A	A	A	A	A	A	A	A	A	A
9	A	A	A	A	A	A	A	A	A	A
10	A	A	A	A	A	A	A	A	A	A
11	A	A	A	A	A	A	A	A	A	A
MULTI PURPOSE CENTER										
15	A	A	A	A	A	A	A	A	A	A
16	A	A	A	A	A	A	A	A	A	A
17	A	A	A	A	A	A	A	A	A	A
18	A	A	A	A	A	A	A	A	A	A
19	A	A	A	A	A	A	A	A	A	A
20	A	A	A	A	A	A	A	A	A	A
21	A	A	A	A	A	A	A	A	A	A
22	A	A	A	A	A	A	A	A	A	A
23	A	A	A	A	A	A	A	A	A	A
24	A	A	A	A	A	A	A	A	A	A
25	A	A	A	A	A	A	A	A	A	A



**RECOMMENDED PCB-HOLE LAYOUT
 COMPONENT SIDE SHOWN**

**PLATED THRU HOLES PARAMETERS
 REFERENCE APPLICATION SPECIFICATION**



	3-5646346-0
	1-5646346-9
	5646346-9
	5646346-4
	5646346-1
	FINISH
	PART NUMBER

THIS DRAWING IS A CONTROLLED DOCUMENT

DESIGNED BY	REVIEWED BY	DATE	REV
108-1622	114-19029	114-19029	1

MALE ASSEMBLY, 2-PACK 2mm HM, TYPE D

007791G=5646346

THIS DRAWING IS UNPUBLISHED. ALL RIGHTS RESERVED.
 BY TYS ELECTRONICS CORPORATION

REVISONS		DATE	BY	APP
AD	00			

- △ MATERIAL:
CONTACT: PHOSPHOR BRONZE.
HOUSING: GLASS-FILLED POLYESTER.
- △ GENERAL PLATING SPECIFICATION: UNDERPLATING
(ENTIRE CONTACT); 1.27µm MIN NICKEL AND ACTION
PIN: 0.5µm MIN TIN.
FOR PLATING OF MATING SURFACES SEE APPLICABLE
SPECIFICATION REFERENCE FOR EACH DASH NUMBER.
- △ CONFORMS TO ALL TESTING ACCORDING TO IEC 61076-4-101
PERFORMANCE LEVEL 2.
- △ CONFORMS TO ALL TESTING ACCORDING TO IEC 61076-4-101
PERFORMANCE LEVEL 1.
- △ CONNECTOR TESTED AND QUALIFIED AGAINST TELCORDIA GR-1217-CORE QUALITY LEVEL 3,
CENTRAL OFFICE APPLICATIONS.
- △ CONNECTOR TESTED AND QUALIFIED AGAINST TELCORDIA GR-1217-CORE QUALITY LEVEL 3,
UNCONTROLLED ENVIRONMENT APPLICATIONS.
- △ CONNECTOR MARKED WITH PART NUMBER AND DATE CODE.
ADDITIONAL CHARACTERS OR MARKINGS, AS WELL AS THE LOCATION OF THE MARKINGS,
MAY BE ADDED FOR TRACEABILITY BASED UPON MANUFACTURERS DISCRETION.
- △ PLATED-THROUGH HOLES AT 2x2mm SQUARE GRID
PATTERN DEFINED BY CONTACT LAYOUT.
- △ FOR ACTUAL PIN LOADING SEE "CONTACT LAYOUT".
- △ FOR ACTUAL PIN DIMENSIONS SEE "CONTACT DIMENSIONS".
- △ TO BE MEASURED AT BOTTOM OF SHROUD.
- △ POLARIZATION FEATURE.
- △ AREA RESERVED FOR KEYING PART (BASIC P/N 100525)
- △ CONNECTOR LUBRICATED WITH BELCORE APPROVED LUBRICANT,
TECHNICAL REFERENCE: TR-NWT-001217 ISSUE 1, SEP 1992.
- △ OBSOLETE PARTS: OBSOLETE CIS STREAMLINING PER D.RENAUD/D.SINISI
- △ 0.76µm MIN GOLD PLATING ON MATING SURFACES

THIS DRAWING IS A CONTROLLED DOCUMENT.		IEC 61076-4-101	STANDARD	TYS Electronics Corporation Harrisburg, Pa 17105-3608	
DESIGNER	ENGINEER	DR	DR	DATE	REVISED
mm	mm	JG	JG	10B-1622	10B-1622
		10B-1622	10B-1622	114-19029	114-19029
SEE SHEET 1	SEE SHEET 1			A100779	G=5646346
				SIZE 4.1	SHEET 2 OF 2