

4

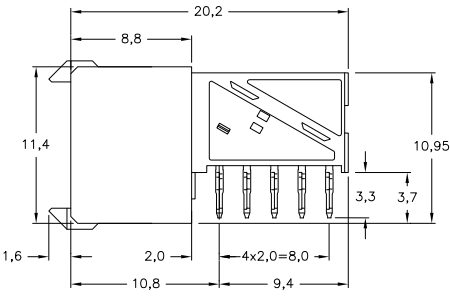
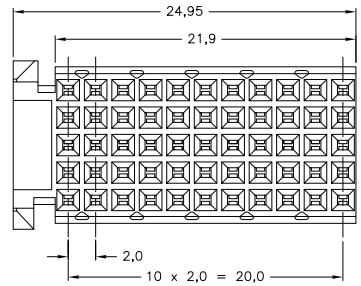
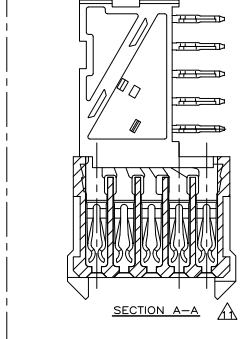
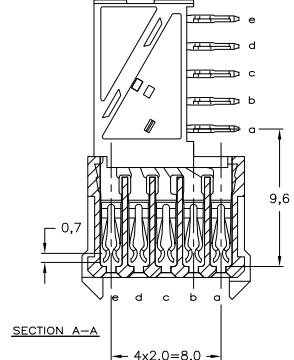
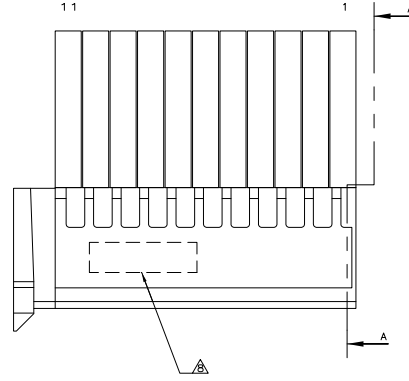
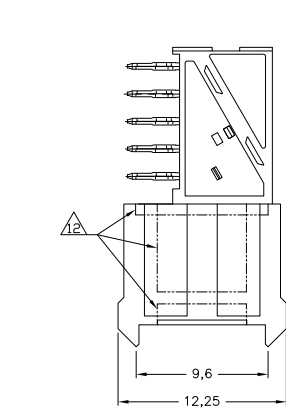
3

2

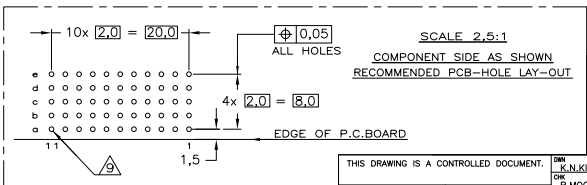
1

THIS DRAWING IS UNPUBLISHED. RELEASED FOR PUBLICATION. ALL RIGHTS RESERVED.

LOC	DIST	REVISIONS			
F	LR	DESCRIPTION	DATE	BY	APPD
D1		REVISED PER ECO-11-005033	28MAR11	RK	HMR



- NOTES:**
- ⚠ MATERIAL CONTACT: PHOSPHORBRONZE
 - ⚠ MATERIAL HOUSING: GLASSFILLED POLYESTER (GRAY)
 - ⚠ UL-RATING 94V0.
 - ⚠ GENERAL PLATING SPECIFICATION: UNDERPLATING (ENTIRE CONTACT): 1,27µm NICKEL MIN. AND ACTION PIN: 0,5µm TIN MIN.
 - ⚠ FOR PLATING OF MATING SURFACES SEE APPLICABLE SPECIFICATION REFERENCE FOR EACH DASH NUMBER.
 - ⚠ CONFORMS TO ALL TESTING ACCORDING IEC 61076-4-101 PERFORMANCE LEVEL 2.
 - ⚠ CONFORMS TO ALL TESTING ACCORDING IEC 61076-4-101 PERFORMANCE LEVEL 1.
 - ⚠ CONNECTOR TESTED AND QUALIFIED AGAINST TELCORDIA GR-1217-CORE QUALITY LEVEL III, CENTRAL OFFICE APPLICATIONS.
 - ⚠ CONNECTOR TESTED AND QUALIFIED AGAINST TELCORDIA GR-1217-CORE QUALITY LEVEL III, UNCONTROLLED ENVIRONMENT APPLICATIONS.
 - ⚠ CONNECTOR LUBRICATED WITH TELCORDIA GR-1217-CORE APPROVED LUBRICANT.
 - ⚠ CONNECTOR PRINTED WITH PARTNUMBER AND DATECODE.
 - ⚠ THE MARKING CAN APPEAR ON THE FRONT SIDE OR ON THE BACK SIDE.
 - ⚠ PLATED-THROUGH HOLES AT 2x2mm SQUARE GRID, 55 HOLES
 - ⚠ 10 FITS WITH INTEGRATED GROUND RETURN UPSHIELD, BASIC P.N. 5352111
 - ⚠ AND INTEGRATED GROUND RETURN LOWERSHIELD, BASIC P.N. 5352112
 - ⚠ CONNECTOR ASSEMBLED WITH REDESIGNED CONTACTS.
 - ⚠ CONTACTS HAVE A CORING-OUT IN THE PLASTIC.
 - ⚠ ALTERNATE CORING-OUT IN HOUSING; NON-FUNCTIONAL.
 - ⚠ OBSOLETE PARTS: OBSOLETE CIS STREAMLINING PER D.RENAUD/D.SINISI
 - ⚠ 0.76µm MIN. GOLD PLATING AT MATING SURFACES.



FINISH	MATERIAL	PART NUMBER
⚠	⚠	3-5100161-0
⚠	⚠	1-5100161-9
⚠	⚠	5100161-9
⚠	⚠	5100161-4
⚠	⚠	5100161-1

THIS DRAWING IS A CONTROLLED DOCUMENT.

DIMENSIONS: mm	DRW: K.H.KIRAN	08AUG2004	TE Connectivity
TOLERANCES UNLESS OTHERWISE SPECIFIED:	CHK: B.MOOU	22SEP2004	
Ø-FRD: ±	APPD: B.MOOU	NAME: -	Z-PACK 2mm HM TYPE C 55 POS. FEMALE CONNECTOR
Ø-RD: ±0.2	PRODUCT SPEC: 108-19082	APPLICATION SPEC: 114-19029	
Ø-FRD: ±	WEIGHT: -	SIZE: A2	
Ø-RD: ±	MATERIAL: FINISH: -	CAGE CODE: 00779	DRAWING NO: 5100161
ANGLE: ±	CUSTOMER DRAWING	SCALE: 4:1	SHEET: 1 of 1

P.C.B. HOLE DIM. ACTION PIN FOR DETAILS SEE APPLICATION SPECIFICATION