

4

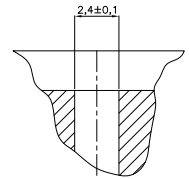
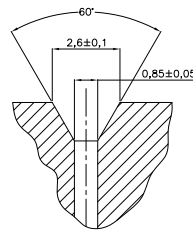
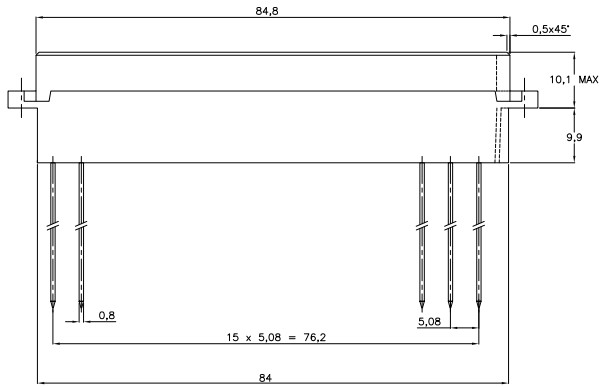
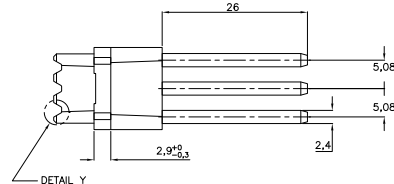
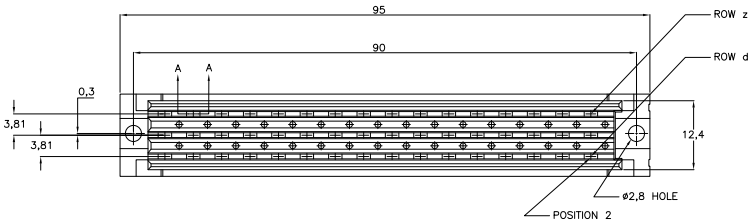
3

2

1

THIS DRAWING IS UNPUBLISHED. RELEASED FOR PUBLICATION
 © COPYRIGHT BY TYCO ELECTRONICS CORPORATION. ALL INTERNATIONAL RIGHTS RESERVED.

LOC	DIST	REVISIONS				
		REV	DESCRIPTION	DATE	BY	APP'D
H		F				
		A				
		F	ECR-07-020965	05-02-09	AEG	MKO



SECTION A-A

ROW	1	2	3	4	5	6	7	8	9	10	11	12	13	14	15	16	17	18	19	20	21	22	23	24	25
d	X	X	X	X	X	X	X	X	X	X	X	X	X	X	X	X	X	X	X	X	X	X	X	X	X
b	X	X	X	X	X	X	X	X	X	X	X	X	X	X	X	X	X	X	X	X	X	X	X	X	X
z	X	X	X	X	X	X	X	X	X	X	X	X	X	X	X	X	X	X	X	X	X	X	X	X	X

AN ASTERISK X DENOTES A CONTACT.

OBSOLETE	2-166010-8		AT CONTACT AREA 0.4 μm Au OVER 1.25 μm Ni. AT POST AREA GOLDFLASH OVER 1.25 μm Ni.
OBSOLETE	2-166010-7	HOUSING: CLASSIFIED	AT CONTACT AREA 2.0 μm Au OVER 1.25 μm Ni. AT POST AREA GOLDFLASH OVER 1.25 μm Ni.
OBSOLETE	2-166010-6	POLYCARBONATE (GREY)	AT CONTACT AREA 3.75 μm Au OVER 1.25 μm Ni. AT POST AREA GOLDFLASH OVER 1.25 μm Ni.
OBSOLETE	2-166010-4	CONTACTS: PHOSPHORBRONZE	AT CONTACT AREA 0.8 μm Au OVER 1.25 μm Ni. AT POST AREA GOLDFLASH OVER 1.25 μm Ni.
	2-166010-1		AT CONTACT AREA 1.25 μm Au OVER 1.25 μm Ni. AT POST AREA GOLDFLASH OVER 1.25 μm Ni.

THIS DRAWING IS A CONTROLLED DOCUMENT.		DRN S.J.L. AMBAUM 25.08.99	Tyco Electronics Corporation "s-Hertogenbosch, Nederland	
DIMENSIONS: INCHES		DR J. GIBBELS	Tyco Electronics	
TOLERANCES UNLESS OTHERWISE SPECIFIED:		APPD	48 POS. FEMALE RC CONN. ACC. TO DIN 41612, F.48F-CIM WITH MAXI TERMI POINT POSTS	
0 PLC ±		PRODUCT SPEC	SIZE CASE CODE DRAWING NO	
1 PLC ±		APPLICATION SPEC	A2 00779 C=166010	
2 PLC ±		WEIGHT	RESTRICTED TO	
3 PLC ±			CUSTOMER DRAWING	
4 PLC ±			SCALE NTS SHEET 1 of 1 REV F	
ANGLES ±				
FINISH				

1471-9 (1/08)

166010

A