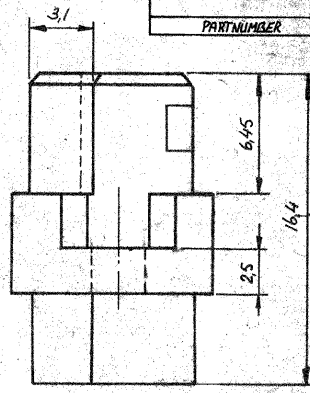
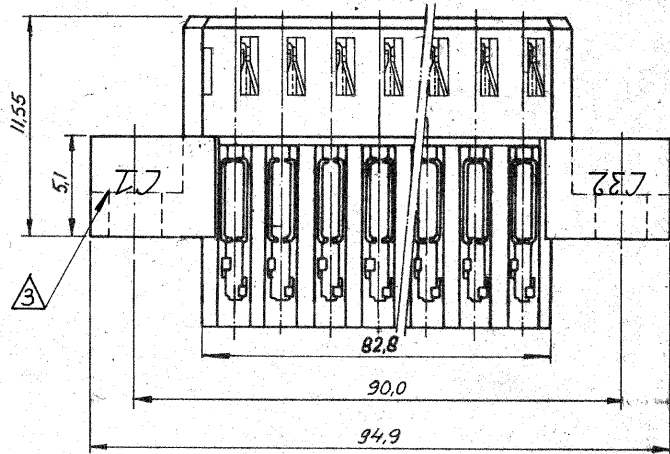
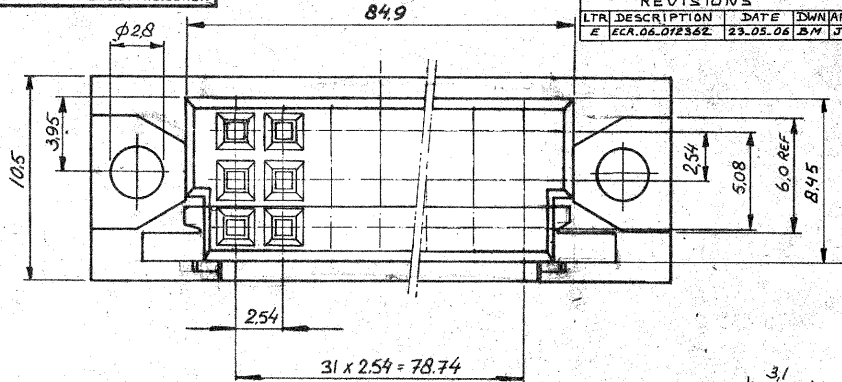


DRAWING MADE IN AMERICAN PROJECTION

REVISIONS				
LTR	DESCRIPTION	DATE	DWN	APRD
E	ECR.06.072362	23.05.06	BN	JB



PART NUMBER	MATERIAL	PLATING
167257-1	Housing: Glassfilled Polyester (Gray) Contacts: Phosphorbronze	Contact area: 2 μ Au over 125 μ Ni Remainder TIN
167257-2	SAME AS -1	SAME AS -1 ONLY ON CONTACT AREA 0.8 μ Au OVER 125 μ Ni.
167257-3	SAME AS -1	SAME AS -1 ONLY ON CONTACT AREA 1.25 μ Au OVER 125 μ Ni.
167257-4	SAME AS -1	SAME AS -1
167257-5	SAME AS -1	SAME AS -2
167257-6	SAME AS -1	SAME AS -3

NOTES

- COVER 826196 CAN BE USED
- CONNECTOR ASSY 167257-... RANDOM LOADED WITH 64 CONTACTS IN OUTER ROWS ONLY (ROW A+C)
- PRINTED CAVITY NUMBER FOR P.N.'S -1, -2, -3, AS SHOWN ON REAR SIDE A1 AND A2. FOR P.N.'S -4, -5, -6 CAVITY NUMBERS PRINTED INVERSED.
- CONNECTOR PRINTED WITH PART NUMBER 167257-...

DIMENSIONS IN P.N. DO NOT SCALE PRINT

ORDER NO.	MATERIAL	PLATING
CUSTOMER COPY FOR REFERENCE ONLY		
DR. M. VAES	DATE 21.9.82	© 1982 BY AMP HOLLAND N.V. ALL RIGHTS RESERVED. AMP PRODUCTS COVERED BY PATENTS AND/OR PATENTS PENDING.
CHK. [Signature]	DATE 2/4/82	
DE [Signature]	DATE [Signature]	WIRE RANGE AWG 30-26
APP. [Signature]	DATE 22.9.82	INSUL. RANGE 0/2 MAX
		SCALE 5:1
		SIZE B
		PROJ. C-167257
		BY E
		NAME 2-32POS BACK PANEL M.T. CONNECTOR (OUTER ROWS LOADED)