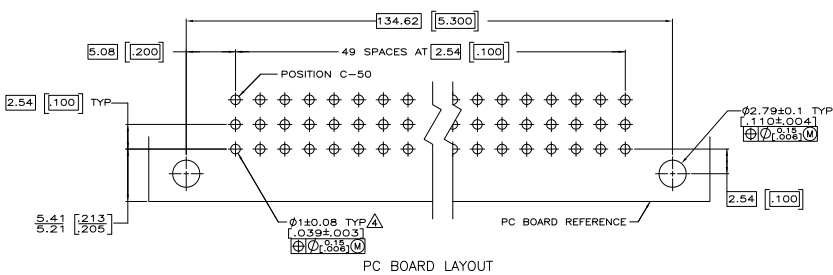
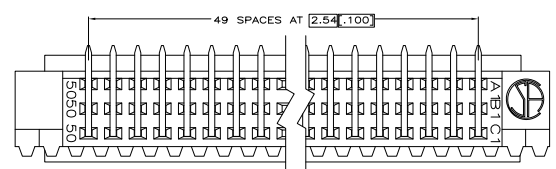
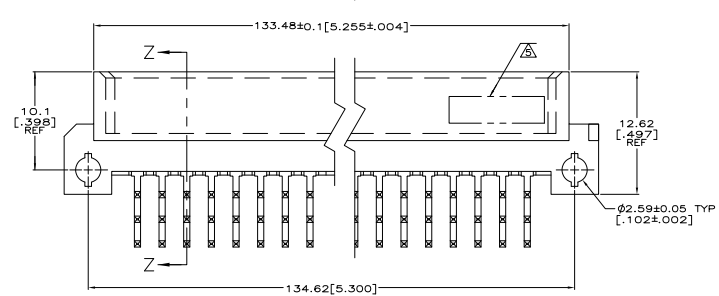
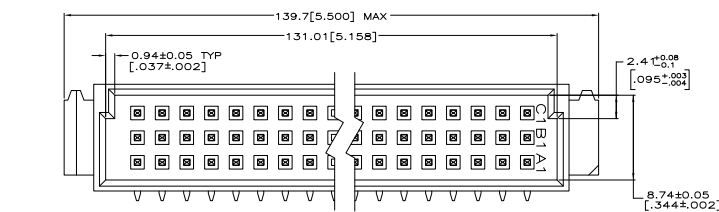
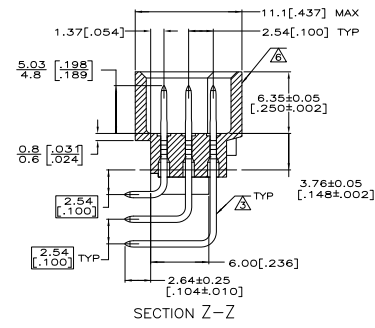


REV	DATE	DESCRIPTION	BY	CHK	APP
AD 00					
01	REV PER E20-07-001987				



- △ HOUSING MATERIAL: GLASS-FILLED POLYMER.
- △ POST MATERIAL: COPPER ALLOY.
- △ POST FINISH: DIN 41612 CLASS 2 IN CONTACT AREA. TIN PLATE ON POSTS.
- △ RECOMMENDED HOLE SIZE FOR MANUAL APPLICATION OF CONNECTOR ONTO PC BOARD.
- △ [PART NUMBER, DATE CODE] MARKED THIS APPROXIMATE AREA.
- △ MARKING ON THIS SIDE.



POSITIONS LOADED	NO. OF LOADED	PART NUMBER
1-40,43-50	C 48	5148468-1
1-40,43-50	B 48	
1-40,43-50	A 48	

THIS DRAWING IS A CONTROLLED DOCUMENT.		REV	DATE	DESCRIPTION	BY	CHK	APP
REV	DATE	DESCRIPTION	BY	CHK	APP		
DIMENSIONS (mm INCHES)		TOLERANCES UNLESS OTHERWISE SPECIFIED		MATERIALS			
FRACTIONAL	DECIMAL	ANGLE	POSITION	ASSEMBLY, PIN, EUROCARD, TYPE C, 144/150 POSITION, SELECT LOAD, 2.64[104] SOLDER POST			
±0.13	±0.005	±0.15	±0.005	SIZE	DATE	DRAWING NO.	REWORKED TO
±0.025	±0.001	±0.025	±0.001	A1	00779	5148468	
OTHER		SPEC		CUSTOMER DRAWING		DATE	REV
						5.1	01