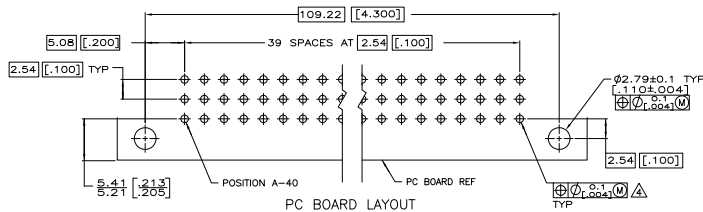
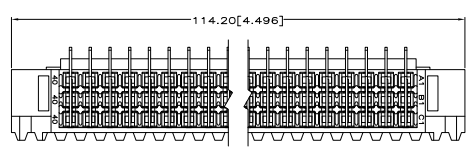
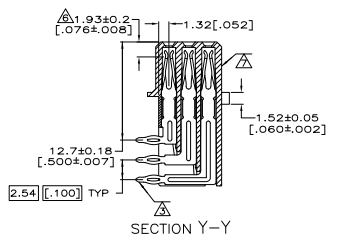
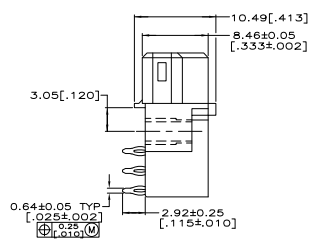
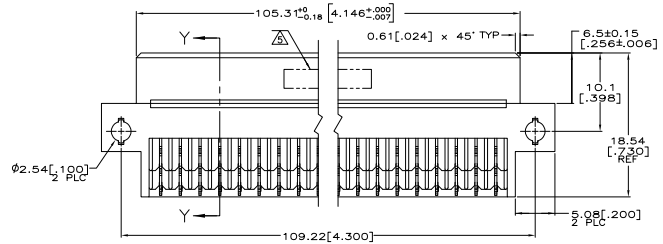


- △ HOUSING MATERIAL: GLASS-FILLED POLYMER.
- △ CONTACT MATERIAL: COPPER ALLOY.
- △ CONTACT FINISH: DIN 41612 CLASS 2 IN CONTACT AREA. TIN PLATE ON POSTS.
- △ COMPLIANT PIN REQUIRES 1.57 [0.62] MINIMUM THICK PC BOARD. RECOMMENDED PC BOARD HOLES ARE Ø1.15 [0.025] [0.453±0.010] DRILLED HOLES WITH 0.02-0.08 [0.001-0.003] COPPER AND 0.008 [0.0003] MINIMUM TIN-LEAD PLATING. FINISHED HOLES AFTER PLATING: Ø0.94-1.09 [0.37-0.43].
- △ PART NUMBER, DATE CODE IDENTIFICATION, CSA LOGO, THIS APPROXIMATE AREA.
- △ CONTACT POINT.
- △ MARKING ON THIS SIDE.



5148360-5
PART NUMBER

THIS DRAWING IS A CONTROLLED DOCUMENT.		REV	EDUCATION	ISSUES	Yates Electronics Corporation Harrisburg, PA 17105-2608
DIMENSIONS (mm [INCHES])	SYMBOLS/LEADS + - - + - - + - - + - -	SHRINK	SHRINK	SHRINK	ASSEMBLY, RECEPTACLE, EUROCARD, TYPE R, 120 POSITION 2.92 [0.115] PRESS-FIT
		ASSEMBLY	ASSEMBLY	ASSEMBLY	
		TEST	TEST	TEST	
DATE	DATE	DATE	DATE	DATE	DATE
REV	REV	REV	REV	REV	REV
DATE	DATE	DATE	DATE	DATE	DATE
REV	REV	REV	REV	REV	REV
DATE	DATE	DATE	DATE	DATE	DATE