

4

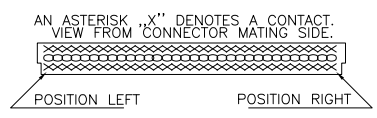
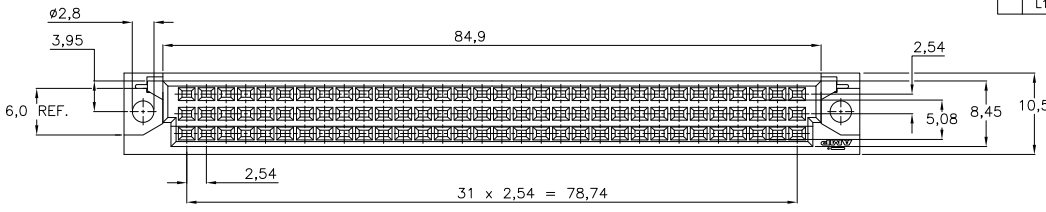
3

2

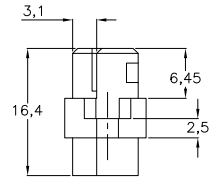
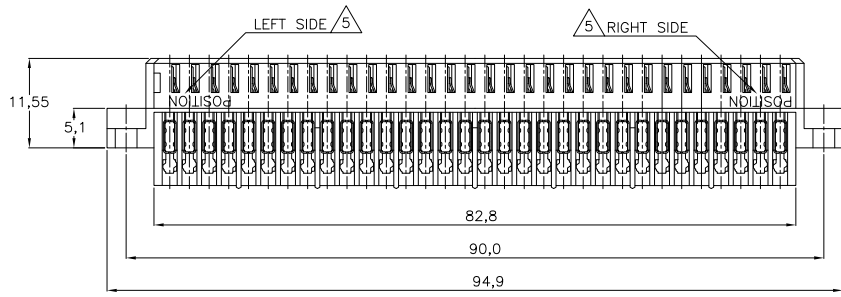
1

THIS DRAWING IS UNPUBLISHED. RELEASED FOR PUBLICATION  
 © COPYRIGHT - BY TYCO ELECTRONICS CORPORATION. ALL INTERNATIONAL RIGHTS RESERVED.

LOC	DIST	REVISIONS				
P	LTR	DESCRIPTION	DATE	DWN	APVD	
L		ECR-06-012362	23-05-06	BM	JB	
L1		ECR-08-014461	21-10-08	AEG	WRV	



DASHNUMBER	CONNECTOR	POSITION	
		LEFT	RIGHT
-1, -2, -3		c1	c32
-4, -5, -6		c32	c1
-8		a1	a32
1-1		a32	a1



NOTES:

- △ MATERIAL :
  - HOUSING : GLASSFILLED POLYESTER
  - COLOUR : GRAY
  - CONTACTS: PHOSPHORBRONZE
- △ PLATING CONTACT :
  - 1 : 2,0 μm Au OVER 1,25 μm Ni AT CONTACT AREA.
  - REMAINDER TIN PLATING.
  - 2 : SAME AS -1 ONLY 0,8 μm Au.
  - 3 : SAME AS -1 ONLY 1,25 μm Au.
  - 4 : SAME AS -1.
  - 5 : SAME AS -2.
  - 6 : SAME AS -3.
  - 8 : SAME AS -2.
  - 1-1 : SAME AS -2.
- 3 COVER 826196-1 CAN BE USED.
- 4 CONNECTOR KIT ASS'Y 166811- AS DELIVERED CONSIST OF A 32 POS. SINGLE ROW CONN. ASS'Y AND A 2x32 POS. DUAL ROW CONN. ASS'Y.
- △ PRINTED CAVITY-NUMBER ON FRONT AND ON REAR SIDE OF CONNECTOR.
- 6 CONNECTOR PRINTED WITH PARTNUMBER 166811-.

WIRE RANGE :  
 AWG 26-22  
 INSULATION RANGE :  
 ø1,2 MAX.

SEE NOTE 2	SEE NOTE 1	1-166811-1
		166811-8
		166811-6
		166811-5
		166811-4
OBSOLETE		166811-3
		166811-2
OBSOLETE		166811-1
	FINISH	MATERIAL
		PARTNUMBER

THIS DRAWING IS A CONTROLLED DOCUMENT.

DIMENSIONS: mm	TOLERANCES UNLESS OTHERWISE SPECIFIED: 0 PLC ± - 1 PLC ± - 2 PLC ± - 3 PLC ± - 4 PLC ± - ANGLES ± -	DWN J. GIBBELS	03APR96	Tyco Electronics Corporation s-Hertogenbosch, Nederland
		CHK R.V. LOKVEN		
MATERIAL	FINISH	APVD R. SMFFETS	NAME	64 POS. BACK PANEL M.T. CONNECTOR
		PRODUCT SPEC	SIZE	CAGE CODE
		APPLICATION SPEC	A3	00779
		WEIGHT	DRAWING NO	C=166811
		CUSTOMER DRAWING	SCALE	NTS
			SHEET	1 of 1
			REV	L1